

Paragon Banking Group PLC

Pillar III Disclosures - 30 September 2022



paragon

Contents

1. Introduction	Page 3
2. Key metrics	Page 7
3. Risk management	Page 12
4. Scope of application	Page 23
5. Own funds	Page 32
6. Countercyclical capital buffer	Page 39
7. Leverage ratio	Page 40
8. Liquidity requirements	Page 44
9. Exposures to credit risk and credit quality	Page 50
10. Credit risk mitigation	Page 59
11. Standardised approach to credit risk	Page 61
12. Exposures to counterparty credit risk	Page 64
13. Exposures to securitisation positions	Page 69
14. Standardised approach and internal model approach for market risk	Page 72
15. Exposures to interest rate risk positions not held in the trading book	Page 74
16. Operational risk	Page 78
17. Remuneration policy	Page 81
18. Encumbered and unencumbered assets	Page 88
19. IRB approach for credit risk	Page 93
20. Glossary	Page 94

Paragon Banking Group PLC

51 Homer Road, Solihull, West Midlands, B91 3QJ

Registered number: 2336032

LEI: 213800S1TDKIB1IUTS72

CAUTIONARY STATEMENT

Sections of this Pillar III disclosure may contain forward-looking statements with respect to certain of the plans and current goals and expectations relating to the future financial condition, business performance and results of the Group. These statements can be identified by the fact that they do not relate strictly to historical or current facts. They use words such as 'anticipate', 'estimate', 'expect', 'intend', 'will', 'project', 'plan', 'believe', 'target' and other words and terms of similar meaning in connection with any discussion of future operating or financial performance but are not the exclusive means of identifying such statements. These have been made by the directors in good faith using information available up to the date on which they approved this report, and the Group undertakes no obligation to update or revise these forward-looking statements for any reason other than in accordance with its legal or regulatory obligations (including under the UK Market Abuse Regulation, UK Listing Rules and the Disclosure Guidance and Transparency Rules of the Financial Conduct Authority ('FCA')).

By their nature, all forward-looking statements involve risk and uncertainty because they relate to future events and circumstances that are beyond the control of the Group and depend upon circumstances that may or may not occur in the future that could cause actual results or events to differ materially from those expressed or implied by the forward-looking statements. There are also a number of factors that could cause actual future financial conditions, business performance, results or developments to differ materially from the plans, goals and expectations expressed or implied by these forward-looking statements and forecasts. As a result, you are cautioned not to place reliance on such forward-looking statements as a prediction of actual results or otherwise.

These factors include, but are not limited to: material impacts related to foreign exchange fluctuations; macro-economic activity; the impact of outbreaks, epidemics or pandemics, and the extent of their impact on overall demand for the Group's services and products; potential changes in dividend policy; changes in government policy and regulation (including the monetary, interest rate and other policies of central banks and other regulatory authorities in the principal markets in which the Group operates) and the consequences thereof; actions by the Group's competitors or counterparties; third party, fraud and reputational risks inherent in its operations; the UK's exit from the EU; unstable UK and global economic conditions and market volatility, including currency and interest rate fluctuations and inflation or deflation; the risk of a global economic downturn; acts of terrorism and other acts of hostility or war and responses to, and consequences of those acts; technological changes and risks to the security of IT and operational infrastructure, systems, data and information resulting from increased threat of cyber and other attacks; general changes in government policy that may significantly influence investor decisions (including, without limitation, actions taken in support of managing and mitigating climate change and in supporting the global transition to net zero carbon emissions); societal shifts in customer financing and investment needs; and other risks inherent to the industries in which the Group operates.

Nothing in this Pillar III disclosure should be construed as a profit forecast.

1. Introduction

This section sets out

- An introduction to the Group
- An overview of the disclosure framework under which this document is prepared
- A summary of the Group's Pillar III disclosure policies
- A summary of the scope and basis of preparation for this document
- A summary of changes made since the Group's last Pillar III disclosures
- A summary of the approval process for the document

Paragon Banking Group PLC (the 'Company') is a UK specialist banking group, sourcing funds in the retail deposit market and lending to consumers and smaller corporates. It is subject to banking regulation and therefore is required, under UK banking regulations, to publicly report on risk and governance matters for each financial year. This expands on the disclosures already required to be given in an entity's annual report and accounts.

This document, referred to as a Pillar III report, is intended to satisfy those requirements. An overview of the disclosures given by theme is shown on page 5.

The Group

The Company controls a group of companies (together the 'Group') including a regulated bank, Paragon Bank PLC (the 'Bank'). The Group analyses its operations, both for internal management reporting and external financial reporting, on the basis of the markets from which its assets are generated. The segments used are described below:

- Mortgage Lending, including the Group's buy-to-let, and owner-occupied first and second charge lending and related activities
- Commercial Lending, including the Group's equipment leasing activities, development finance, structured lending and other offerings targeted towards SME customers, together with its motor finance business

Each division is responsible for the generation of new business with servicing and the majority of other support functions managed on a group-wide basis.

On 18 February 2014 the Bank was authorised by the Prudential Regulation Authority ('PRA') and is regulated by the PRA and the Financial Conduct Authority ('FCA'). The PRA sets requirements for the Bank relating to capital and liquidity adequacy.

Disclosure framework

The Group is regulated for prudential capital purposes under the Basel III regime, the international regime governing capital maintenance in banks, which is supervised by the Basel Committee on Banking Supervision ('BCBS'). In the UK this regime is enforced through the PRA Rulebook (the 'Rulebook'), following the implementation of the Financial Services Act 2021 on 1 January 2022. Formerly these rules were applied on a European Union ('EU') basis through the fourth Capital Requirements Directive ('CRD IV') and the first Capital Requirements Regulation ('CRR') (Regulation 575/2013). Certain aspects of this EU legislation remain applicable in the UK.

The Company has been operating under the Basel III regime since the authorisation of the Bank in 2014.

The Basel III approach consists of three elements, or 'Pillars', which represent the key principles of the regime:

Pillar I	This covers the minimum capital requirements of Basel III. The calculation is based on a risk based approach. It focuses on credit, operational and market risk in determining the Group's Minimum Capital Requirement ('MCR'), based on a standard 8% of its risk weighted assets.
Pillar II	<p>This requires that the Group conducts an Internal Capital Adequacy Assessment Process ('ICAAP') which is subject to review by the PRA under the Supervisory Review and Evaluation Process ('SREP').</p> <p>In the ICAAP the Company's Board undertakes an assessment of the key risks facing the Company's business against which capital has not been provided under Pillar I to determine whether additional regulatory capital, over and above the 8% Pillar I requirement, should be held, based on the identified risks and the quality of the risk management processes in place.</p> <p>A firm's Individual Capital Requirement ('ICR') is set by the PRA based on the ICAAP.</p>
Pillar III	<p>Pillar III complements Pillars I and II and aims to encourage market discipline by setting out disclosure requirements which should allow market participants to assess key pieces of information on a firm's capital, risk exposures, risk management processes and remuneration.</p> <p>These requirements are set out in the Disclosure (CRR) Part of the Rulebook.</p>

The regulatory approach to Pillar III was changed in the year, with standardised templates set for all disclosure items and included in the Rulebook. The majority of this report comprises these templates, all of which are labelled in accordance with the Rulebook.

The Group has adopted the Standardised Approach ('SA') for credit risk and the Basic Indicator Approach ('BIA') for operational risk. It has submitted an application for authorisation to adopt an Internal Ratings Based ('IRB') approach for credit risk in future periods. These choices impact on which disclosures are required under Pillar III.

Pillar III disclosure policy

The Company's Pillar III disclosures cover the Group as a whole, comprising the Company and all its subsidiary undertakings. They are therefore prepared on the same basis as the Group's consolidated accounts. These bodies are regulated on a consolidated basis and this disclosure treats them as such. References to the Group in this document therefore include the Bank.

The Company's Disclosure Policy for Pillar III is based on its Board of Directors' interpretation of the requirements of the Disclosure (CRR) Part of the Rulebook.

The Group is defined as an 'Other Institution' under these rules (i.e. neither Large nor Small and Simple) having a balance sheet of less than €30.0 billion but greater than €5.0 billion. Its disclosure requirements are therefore set out in Article 433c of the Rulebook. This requires that the Group produces an annual Pillar III report and a summary Pillar III on a half yearly basis.

There are certain disclosures that are only required by the Rulebook where an institution is large or an LREQ firm, as defined by the PRA Rulebook. The Group's balance sheet size is too small to be classified as large or to fall within the LREQ rules on leverage. Therefore these have not been presented for the Group and this is stated under the relevant sections within the report.

The level of disclosure on remuneration matters is subject to proportionality rules set out in PRA SS2/17 'Remuneration'. Institutions are divided between level one, level two or level three based on their total assets, which determines the amount of detail required in these disclosures. The Group is a proportionality level two bank as its average total assets exceed £13 billion but do not exceed £50 billion. A number of templates in the PRA rulebook apply only to proportionality level one banks ('Level 1 banks') and therefore are not applicable to the Group. This is noted under the applicable sections within the report.

The Pillar III disclosures are updated on an annual basis using the Group's year end date of 30 September, following publication of the Annual Report and Accounts. A half-yearly summary using the Group's half-year date of 31 March is also provided. The annual and half-yearly reporting process will include consideration of regulatory changes and developing best practice, to ensure that disclosures remain appropriate. More frequent disclosures will be made if there is a material change in the nature of the Group's risk profile during any particular year.

Pillar III disclosures are prepared with input from the Finance, Risk, Treasury and Human Resources functions, and from regulatory specialists. They are reviewed at senior and executive management level, considered by the Audit Committee and approved by the Board of Directors in the same way as the Group's half-year and Annual Report and Accounts for the year.

Pillar III regulatory capital disclosures are published on the investor relations section of the Group's corporate website www.paragonbankinggroup.co.uk, alongside the Annual Report and Accounts for the year. Both documents are published on the website at approximately the same time, in accordance with the requirement in Article 433 of the Rulebook to publish the Pillar III disclosures in conjunction with the date of publication of the financial statements.

The Company's Pillar III disclosure policy is considered annually to ensure that it remains appropriate in the light of new regulations and emerging best practice.

The Company's Pillar III regulatory capital disclosure policies were approved by the Board of Directors in February 2015 and have been confirmed annually, most recently in December 2022 on the approval of this document.

Scope and basis of disclosure

This Pillar III disclosure has been drawn up in conjunction with the Annual Report and Accounts of the Group for the year ended 30 September 2022 ('the Group Accounts') and with the Group's regulatory reporting for the year.

The figures in this Pillar III disclosure are consistent with the Group Accounts, but do not form part of the Group Accounts. The disclosures presented have been reviewed internally but have not been externally audited. The disclosures are also consistent, where appropriate, with regulatory disclosures submitted to the regulator.

The Rulebook requires that all disclosures required by the Disclosure (CRR) Part are provided in a single location, therefore requirements may not be addressed by cross-reference to other public documents. This is a change applying for the first time in the current year.

The Group consolidation for regulatory purposes is the same as that used for statutory purposes and hence all subsidiary undertakings within the Group have been consolidated in the Pillar III disclosures. These are listed in section 4 – Scope of Application, template UK LI3.

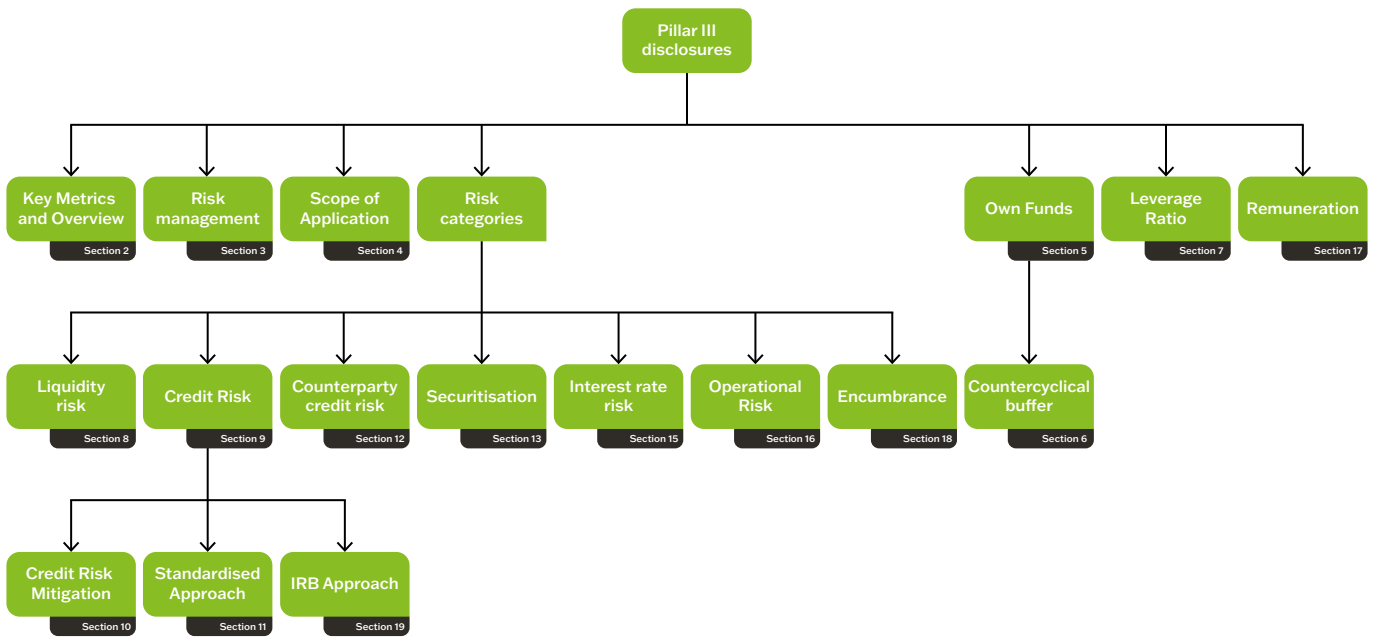
The Pillar III disclosures have been prepared for the Group as a whole, in accordance with the rules laid out in Articles 431 to 451 of the Disclosure (CRR) Part of the Rulebook and having regard to materiality as described above.

The disclosures provide information on the capital adequacy and risk management processes of the Group. These disclosures have been compiled on the most appropriate basis for this purpose and following the instructions on calculation and classification given in the Rulebook. Therefore they may not agree directly with disclosures addressing similar matters presented in the Group Accounts.

Overview of disclosures

Under the new PRA Rulebook 'Disclosure (CRR)' part, the disclosures are set out in prescribed templates which are required to be presented in their entirety within the Pillar III report. For the purpose of this document these disclosures and their applicable templates have been grouped thematically, as illustrated below.

Pillar III document overview



Development in disclosures

Disclosures have been updated for 2022 following the onshoring of the CRR into the PRA Rulebook as a result of the UK's departure from the EU and the updates made in the onshored version of the CRR by the EU before it became UK law.

These included an increased level of prescription in the level, structure and format of the disclosures to be provided, including the introduction of a suite of templates covering all Pillar III disclosure matters. The requirement to use these standard templates, where much content may not be relevant for any particular bank, means that simpler reporters will provide a significant volume of nil returns.

In drawing up these disclosures the Group has considered the new regulations carefully and reviewed emerging market practice, analysing Pillar III reports made by comparable UK lenders including those for the larger challenger banks and building societies. However, as the changes in the Rulebook applied only from January 2022, many comparable organisations are yet to publish their first Pillar III report under the new rules.

Market practice will clearly continue to develop as more firms report under the new rules and the Group will continue to monitor practice as it emerges over time.

The PRA has also indicated its intention to review the scope and application of onshored EU regulations and any outcomes from this exercise applicable to the Pillar III regime will also be the subject of monitoring.

Approval

The Board of Directors considered this document in the light of, amongst other things:

- The Board's consideration of the Group Accounts
- The ICAAP and the directors' input into this process
- The Individual Liquidity Adequacy Assessment Process ('ILAAP') and the directors' input into this process
- The Board's overall understanding of the Group's risk profile and operations

The Group Accounts include audited and unaudited disclosures addressing the Group's risk exposure, mitigation and appetites. In approving the Group Accounts the directors had to consider the appropriateness of those disclosures and the overall adequacy of the Group's risk management framework.

The Group went through its annual ICAAP process during the year. The ICAAP was prepared under the direction of the Chief Financial Officer ('CFO') and the executive management of the Group, with appropriate input and challenge from other areas of the business. The ICAAP was reviewed and challenged by the Group's executive and was formally approved by the Board in April 2022. Throughout the ICAAP's preparation, the Board was kept up-to-date with its progress and key findings, and the directors have received regulatory training sessions to ensure that they are able to provide the appropriate level of challenge.

The Group completes an updated ICAAP on at least an annual basis. The update process will occur more frequently if there is a significant change in the Group's business model (potentially following a major acquisition) or in the economic environment within which the Group operates.

In 2021 the PRA conducted a SREP of the Group's capital requirements, based on the ICAAP analysis performed in 2020. The results of this review were very positive, with the regulator significantly reducing its capital requirement based on its assessment of the Group's risk exposures and management systems.

Future ICAAPs will be subject to SREP reviews periodically, particularly in the event of significant changes in the business.

This document was considered by the executive directors and by the Board and the Audit Committee and non-executive directors prior to publication, having regard to their understanding of the business and appropriate external advice.

In particular, they considered whether:

- As a whole the document properly represented the Group's position
- The use of materiality for disclosure purposes was appropriate
- The Group's formal Pillar III disclosure policy remained appropriate
- Annual publication of the disclosures remained appropriate

The directors were able to satisfy themselves on these matters and the Pillar III disclosures were therefore approved for publication by the Board of Directors of Paragon Banking Group PLC on 27 January 2023.

2. Key metrics and overview of risk weighted exposure amounts

This section sets out

- Overview of risk weighted assets
- Key metrics

Included in this section are tables which set out the calculation of the Group's total Risk Weighted Exposure Amount ('RWEA') and its key capital and liquidity metrics. The RWEA table (UK OV1) summarises the individual elements of RWEA, the derivation of which is discussed in more detail in other sections of the document. The key metrics table (UK KM1), which the Group is required to publish on a six-monthly basis, summarises information covered in more detail in subsequent sections.

2.1 UK OV1 – Overview of risk weighted exposure amounts

		Risk weighted exposure amounts (RWEAs)		Total own funds requirements	Further information
		a	b	c	
		30 Sept 22	30 Sept 21	30 Sept 22	
		£m	£m	£m	
1	Credit risk (excluding CCR)	6,763.3	6,186.1	541.1	
2	Of which the standardised approach	6,763.3	6,247.1	541.1	Section 11, template UK CR4
3	Of which the foundation IRB (FIRB) approach	-	-	-	
4	Of which slotting approach	-	-	-	
UK 4a	Of which equities under the simple riskweighted approach	-	-	-	
5	Of which the advanced IRB ('AIRB') approach	-	-	-	
6	Counterparty credit risk - CCR	249.9	30.9	19.9	
7	Of which the standardised approach	130.8	17.2	10.5	Section 12, template UK CCR1
8	Of which internal model method ('IMM')	-	-	-	
UK 8a	Of which exposures to a CCP	7.5	1.6	0.6	Section 12, template UK CCR8
UK 8b	Of which credit valuation adjustment - CVA	118.6	13.7	9.5	Section 12, template UK CCR2
9	Of which other CCR	-	-	-	
10	Empty set in the UK				
11	Empty set in the UK				
12	Empty set in the UK				
13	Empty set in the UK				
14	Empty set in the UK				

15	Settlement risk	-	-	-	
16	Securitisation exposures in the non-trading book (after the cap)	-	-	-	
17	Of which SEC-IRBA approach	-	-	-	
18	Of which SEC-ERBA (including IAA)	-	-	-	
19	Of which SEC-SA approach	-	-	-	
UK 19a	Of which 1250%/ deduction	-	-	-	
20	Position, foreign exchange and commodities risks (Market risk)	-	-	-	
21	Of which the standardised approach	-	-	-	
22	Of which IMA	-	-	-	
UK 22a	Large exposures	-	-	-	
23	Operational risk	633.1	576.0	50.6	Section 16, template UK OR1
UK 23a	Of which basic indicator approach	633.1	576.0	50.6	Section 16, template UK OR1
UK 23b	Of which standardised approach	-	-	-	
UK 23c	Of which advanced measurement approach	-	-	-	
24	Amounts below the thresholds for deduction (subject to 250% risk weight) (For information)	-	-	-	
25	Empty set in the UK				
26	Empty set in the UK				
27	Empty set in the UK				
28	Empty set in the UK				
29	Total	7,645.8	6,793.0	611.7	

2.2 UK KM1 - Key metrics template

		a	c	e	Notes	Further information
£m		30 Sept 22 £m	30 Mar 22 £m	30 Sept 21 £m		
	Available own funds (amounts)					
1	Common Equity Tier 1 ('CET1') Capital	1,221.8	1,092.4	1,055.8		Section 5 UK CC1
2	Tier 1 capital	1,221.8	1,092.4	1,055.8		Section 5 UK CC1
3	Total capital	1,371.8	1,242.4	1,205.8		Section 5 UK CC1
	Risk-weighted exposure amounts					
4	Total risk-weighted exposure amount	7,515.0	7,095.7	6,836.8		Section 5 UK CC1
	Capital ratios (as a percentage of risk-weighted exposure amount)					
5	Common Equity Tier 1 ratio (%)	16.3	15.4	15.4		

6	Tier 1 ratio (%)	16.3	15.4	15.4		
7	Total capital ratio (%)	18.3	17.5	17.6		
	Additional own funds requirements based on SREP (as a percentage of risk-weighted exposure amount)					
7a	Additional CET1 SREP requirements (%)	0.4	0.4	0.4		
7b	Additional AT1 SREP requirements (%)	0.2	0.2	0.2		
7c	Additional T2 SREP requirements (%)	0.2	0.2	0.2		
7d	Total SREP own funds requirements (%)	8.8	8.8	8.8		
	Combined buffer requirement (as a percentage of risk-weighted exposure amount)					
8	Capital conservation buffer (%)	2.5	2.5	2.5		
UK 8a	Conversational buffer due to macro-prudential or systemic risk identified at the level of a Member State (%)	-	-	-	<i>a</i>	
9	Institution specific countercyclical capital buffer (%)	0.0	0.0	0.0		
UK 9a	Systemic risk buffer (%)	-	-	-	<i>a</i>	
10	Global systemically important institution buffer (%)	-	-	-	<i>a</i>	
UK 10a	Other Systemically Important Institution buffer	-	-	-	<i>a</i>	
11	Combined buffer requirement (%)	2.5	2.5	2.5		
UK 11a	Overall capital requirements (%)	11.3	11.3	11.3		
12	CET1 available after meeting the total SREP own funds requirements (%)	8.8	8.7	8.8		
	Leverage ratio					
13	Total exposure measure excluding claims on central banks	15,387.5	14,728.3	14,123.2		<i>Section 7</i>
14	Leverage ratio excluding claims on central banks (%)	7.9	7.4	7.5		<i>Section 7</i>
	Additional leverage ratio disclosure requirements					
14a	Fully loaded ECL accounting model leverage ratio excluding claims on central banks (%)	N/A	N/A	N/A	<i>b</i>	
14b	Leverage ratio including claims on central banks (%)	N/A	N/A	N/A	<i>b</i>	
14c	Average leverage ratio excluding claims on central banks (%)	N/A	N/A	N/A	<i>b</i>	
14d	Average leverage ratio including claims on central banks (%)	N/A	N/A	N/A	<i>b</i>	
14e	Countercyclical leverage ratio buffer (%)	N/A	N/A	N/A	<i>b</i>	
	Liquidity Coverage Ratio					
15	Total high-quality liquid assets ('HQLA') (Weighted value -average)	1,296.7	1,254.3	1,393.5	<i>c</i>	<i>Section 8</i>
UK 16a	Cash outflows - Total weighted value	1,152.8	1,115.6	1,166.2	<i>c</i>	<i>Section 8</i>
UK 16b	Cash inflows - Total weighted value	265.4	273.0	289.2	<i>c</i>	<i>Section 8</i>
16	Total net cash outflows (adjusted value)	887.4	842.5	877.1	<i>c</i>	<i>Section 8</i>

17	Liquidity coverage ratio (%)	146.3	151.1	164.9	d	Section 8
	Net Stable Funding Ratio					
18	Total available stable funding	16,596.2	16,019.3	15,452.9	e	Section 8
19	Total required stable funding	13,660.0	13,286.1	12,994.4	e	Section 8
20	NSFR ratio (%)	121.5	120.6	118.9	e	Section 8

Notes

- [a] These buffers are not currently applicable to the Group
- [b] These lines are only required for LREQ banks, as defined by the PRA Rulebook. The Group's balance sheet size is too small to be classified as an LREQ bank.
- [c] These measures are based on a 12 month rolling average of month end positions.
- [d] This measure is based on a 12 month rolling average of month end positions, therefore cannot be derived from the values given above it.
- [e] These measures are based on a 4 quarter rolling average of quarter end positions.

2.3 IFRS 9 / Article 468 - Impact of IFRS 9 transitional arrangements & temporary treatment in accordance with CRR Article 468

		30 Sept 22	30 Sept 21
	Available capital (amounts)	£m	£m
1	Common Equity Tier 1 ('CET1') Capital	1,221.8	1,055.8
2	Common Equity Tier-1 ('CET1') capital as if IFRS 9 or analogous ECLs transitional arrangements had not been applied	1,196.0	1,026.1
2a	CET1 capital as if the temporary treatment of unrealised gains and losses measured at fair value through OCI (other comprehensive income) in accordance with Article 468 of the CRR had not been applied	1,221.8	1,055.8
3	Tier-1 capital	1,221.8	1,055.8
4	Tier-1 capital as if IFRS 9 or analogous ECLs transitional arrangements had not been applied	1,196.0	1,026.1
4a	Tier-1 capital as if the temporary treatment of unrealised gains and losses measured at fair value through OCI in accordance with Article 468 of the CRR had not been applied	1,221.8	1,055.8
5	Total capital	1,371.8	1,205.8
6	Total capital as if IFRS 9 or analogous ECLs transitional arrangements had not been applied	1,346.0	1,176.1
6a	Total capital as if the temporary treatment of unrealised gains and losses measured at fair value through OCI in accordance with Article 468 of the CRR had not been applied	1,371.8	1,205.8
	Risk-weighted assets (amounts)		
7	Total risk-weighted assets	7,515.0	6,836.8
8	Total risk-weighted assets as if IFRS 9 or analogous ECLs transitional arrangements had not been applied	7,489.2	6,807.1
	Capital ratios		
9	Common Equity Tier-1 (as a percentage of risk exposure amount)	16.3%	15.4%
10	Common Equity Tier-1 (as a percentage of risk exposure amount) as if IFRS 9 or analogous ECLs transitional arrangements had not been applied	16.0%	15.1%
10a	CET1 (as a percentage of risk exposure amount) as if the temporary treatment of unrealised gains and losses measured at fair value through OCI in accordance with Article 468 of the CRR had not been applied	16.3%	15.4%

11	Tier-1 (as a percentage of risk exposure amount)	16.3%	15.4%
12	Tier-1 (as a percentage of risk exposure amount) as if IFRS 9 or analogous ECLs transitional arrangements had not been applied	16.0%	15.1%
12a	Tier-1 (as a percentage of risk exposure amount) as if the temporary treatment of unrealistic gains and losses measured at fair value through OCI in accordance with Article 468 of the CRR had not been applied	16.3%	15.4%
13	Total capital (as a percentage of risk exposure amount)	18.3%	17.6%
14	Total capital (as a percentage of risk exposure amount) as if IFRS 9 or analogous ECLs transitional arrangements had not been applied	18.0%	17.3%
14a	Total capital (as a percentage of risk exposure amount) as if the temporary treatment of unrealised gains and losses measured at fair value through OCI in accordance with Article 468 of the CRR had not been applied	18.3%	17.6%
	Leverage ratio		
15	Leverage ratio total exposure measure	15,387.5	14,123.2
16	Leverage ratio	7.9%	7.5%
17	Leverage ratio as if IFRS 9 or analogous ECLs transitional arrangements had not been applied	7.8%	7.3%
17a	Leverage ratio as if the temporary treatment of unrealised gains and losses measured at fair value through OCI in accordance with Article 468 of the CRR had not been applied	7.9%	7.5%

2.4 UK INS1 – Insurance participations

The Group has no own funds held in insurance or reinsurance firms therefore template UK INS1 has not been presented.

2.5 UK INS2 – Financial conglomerates information on own funds and capital adequacy ratio

Financial conglomerates are large groups with significant activities in more than one financial sector (banking, investment, insurance). The Group does not qualify as a financial conglomerate therefore template UK INS2 has not been presented.

2.6 UK OVC – ICAAP information

(a) Approach to assessing the adequacy of the internal capital (Article 438(a) CRR)

The Group's capital risk appetite has been set at a level which ensures that, at all times, it will maintain own funds, which are adequate to meet the internal requirements of the Board as well as the PRA's overall financial adequacy rule.

The Group undertakes an Internal Capital Adequacy Assessment Process ('ICAAP') which challenges the amount, and quality, of capital which is required to maintain a strong balance sheet characterised by strong liquidity, superior asset quality and a capital structure which supports the risk taking activities of the Group and its ability to absorb losses.

The Pillar 2A assessment considers firm specific risks and risks not included in Pillar 1. Pillar 2B considers the impact of a range of plausible but severe economic scenarios on the Group's capital resources and requirements, and the actions that could be taken to manage the capital position during periods of stress, across a five-year planning horizon.

The Group's Corporate Plan is developed with input from Finance, Risk, Treasury and the business lines, and forms the foundation for financial modelling and stress testing used as part of the ICAAP.

The ICAAP is subject to Executive Risk Committee ('ERC') and Board approval (upon recommendation of the Risk and Compliance Committee of the Board). Performance metrics are reviewed and monitored by the Asset and Liability Committee ('ALCO') and through Credit Committee.

The ICAAP is undertaken annually or more frequently should the need arise, for example on a significant acquisition or disposal, or change in the Group's risk profile.

(b) Result of the Group's internal capital adequacy assessment process (Article 438(a) CRR)

Under Annex II to the Disclosure (CRR) Part of the Rulebook, this information shall only be disclosed by institutions when required by the relevant competent authority. This has not been demanded from the Group.

3. Risk management

This section sets out

- An overview of the Group's risk management processes, including
 - Risk statement
 - The risk management framework
 - The process of risk governance
- Strategies and processes to manage risks
- The process by which the Group's risk appetite is set with regard to those risks and the principal measures used to monitor them
- Details of the Board's assessment of the Group's risk management processes in the year
- Recruitment policy for the selection of members of management and their actual knowledge skills and expertise

The way that the Group manages risk is fundamental to its soundness and to the level of capital it is required to carry to protect depositors. The Rulebook requires certain disclosures about the Group's approach to risk management and governance to place the disclosures dealing with specific aspects of risk in their proper context.

3.1 UK OVA – RISK MANAGEMENT APPROACH

(a) Risk Statement approved by the management body (Point (f) of Article 435(1) CRR)

Effective risk management is core to the execution of the Group's strategy.

The Group's activities necessarily incur an element of risk; however the Group seeks to protect itself and its stakeholders from the adverse impacts of risk through:

- The Board defining the Group's attitude to risk, and setting qualitative statements and quantitative metrics to define and assess the Group's appetite and tolerance for risk across the principal risk exposures
- Establishing a consistent risk taxonomy, describing the principal risk categories and the more granular aspects of each of these risks
- Establishing a robust suite of risk policies and policy standards, which align to the risk taxonomy, that detail approach to risk appetite and set the minimum control requirements that inform the control activities within business processes
- Establishing standards for the consistent identification, assessment, treatment, monitoring and reporting of risk exposure and loss experience
- Promoting an appropriate risk culture across the Group, ensuring that risk is considered as part of all key strategic and business decision making

The Group's enterprise risk management framework ('ERMF') is designed to enable management to identify and focus attention on the risks most significant to its strategic objectives and to provide an early warning of events that put those objectives at risk. To support this the Group employs a 'three lines of defence model' to delineate responsibilities in the management of risk ensuring adequate segregation in the oversight and assurance of risk.

The Group's independent risk function, which is led by the Chief Risk Officer ('CRO'), provides oversight and challenge of risk management practices and performance, with the Internal Audit function providing assurance to the Board on the overall effectiveness of the internal control environment.

The current suite of principal risks that the Group is seeking to manage to meet its strategic objectives, and the risk committee that oversees each of these, is as follows.

Principal risk	Description	Risk Management Committee
Capital	The risk that there is or will be insufficient capital to operate effectively including meeting minimum regulatory requirements, operating within board-approved risk appetite and supporting the Group's strategic goals	Asset and Liability Committee
Liquidity and Funding	The risk that the Group has insufficient financial resources to enable it to meet its obligations as they fall due, cannot raise or maintain sufficient funds to finance its future plans, or can only secure such resources at excessive cost and / or encumbrance	Asset and Liability Committee
Market	The risk of changes in the net value of, or net income arising from, the Group's assets and liabilities from adverse movements in market prices. The Group does not have a trading book, but the risk arises in the banking book	Asset and Liability Committee
Credit	The risk of financial loss arising from a borrower or counterparty failing to meet their financial obligations to the Group when they fall due, or a change in the credit quality of the third party or instrument, as evidenced by a change in its credit ratings	Credit Committee
Model	The risk that the Group may make incorrect decisions based on the output of internal models, due to errors in the development, implementation or use of such models resulting in a loss or misreporting within financial statements	Model Review Group
Reputational	The risk of negative consequences arising from a failure to meet the expectations and standards of the Group's customers, investors, regulators or other stakeholders whilst undertaking business activities	Executive Risk Committee
Strategic	The risk that the corporate plan does not fully align to and support the strategic priorities or is not executed effectively as a result of external factors, incorrect planning assumptions or insufficient or inadequate resources	Executive Risk Committee
Conduct	The risk that the Group's culture drives poor behaviours or decision making in the execution of its business activities which leads to failure to achieve fair outcomes for customers and /or the ability to demonstrate the Group is acting with integrity in the market	Customer and Conduct Committee
Climate change	The risk of climate change impacting the Group either directly or indirectly through its third party relationships. This includes the transitional risk to the Group's strategy and profile through moving to a low carbon environment and any physical risks arising from changes to the natural environment	Executive Risk Committee
Operational	The risk of financial and non-financial detriment resulting from inadequate or failed internal procedures, people and systems or from external events	Operational Risk Committee

There are no transactions with within the Group related parties that have a material impact on the risk profile of the Group. The Group does not have any affiliates.

The Group's risk appetite is aligned to its principal risks and is supported by board and executive-level measures underpinned by tolerances that align to the risk appetite thresholds.

These measures are subject to regular review by the relevant risk management committee, and appropriate escalation to the ERC and Board Risk and Compliance Committee ('RCC') is in place should any measure exceed its tolerance.

Risk appetite measures are reviewed as part of the annual review of the principal risk policy and, in addition, holistically reviewed by the board-level annually as part of the corporate planning process.

At the beginning of 2021 the RCC approved a project to review, enhance and implement the Group's ERMF. In the second half of 2021 the project was mobilised to develop and enhance the ERMF supporting frameworks and processes. This project continues to deliver on track and is scheduled to close in 2023, with the embedding of the Framework continuing as business as usual activity.

(b) Information on the risk governance structure for each type of risk (Point (b) of Article 435(1) CRR)

Governance

The Board is accountable for the management of the principal risks facing the Group. It delegates oversight responsibility to the RCC and receives regular reports on the status of each principal risk from the ERC, via the Chief Executive Officer ('CEO'). The oversight of the management of each principal risk is delegated by the ERC to the relevant risk management committee.

Paragon Banking Group PLC Board

Audit Committee

Assists the Board in fulfilling its oversight responsibilities by reviewing and monitoring:

- The integrity of the financial information provided to shareholders
- The Group's systems of internal financial control and other control systems
- The internal and external audit process and auditors
- The process for compliance with laws and regulations

Risk and Compliance Committee

Reviews, on behalf of the Board, management's recommendations on enterprise risk, in particular:

- The Group's current and future risk appetite including the extent and categories of risk which the Board regards as acceptable
- The Group's enterprise risk management framework including principles, supporting frameworks, risk policies, personnel and procedures
- The risk culture, to ensure that it supports the Group's risk appetite
- The strategy to ensure that it promotes integrity in the market, the fair treatment of customers and good outcomes for retail customers as central to operations and culture
- The Group's processes for compliance with laws, regulations and ethical codes of practice and prevention of fraud

Model Risk Committee ('MRC')

The MRC is a subsidiary committee of the RCC and its role is to review and make recommendations on all material aspects of the rating and estimation processes in relation to key credit and finance models. The MRC also acts as the 'Designated Committee' for IRB purposes, approving all material aspects of IRB rating systems.

Under the leadership of the CEO, there are a number of risk management committees that oversee management of risk across the Group, as follows:

Executive Risk Committee

Oversight of Reputational, Climate Change and Strategic Risk

Assists the CEO in designing and embedding the Group's risk framework, monitoring adherence to risk appetite statements, identifying, assessing and managing the principal risks within the Group and reviewing stress and scenario testing of the Group's strategic and business plans. The ERC has direct responsibility for Strategic, Climate Change and Reputational Risk but delegates the oversight of certain other principal risks to its sub-committees. The ERC reviews all Principal Risk and level 2 Risk Policies and recommends changes to Principal Risk Policies to the Board Risk and Compliance Committee. The ERC oversees the development and maintenance of the Strategic and Reputational Risk policies and adherence to them, in particular

Asset and Liability Committee ('ALCO')

Oversight of Capital Risk, Liquidity and Funding Risk, Market Risk and Wholesale Counterparty Credit Risk

The principal purpose of ALCO is to monitor and review the financial risk management of the Group's balance sheet. ALCO operates within clearly delegated authorities, monitoring exposures and providing recommendations on actions required

Credit Committee ('CC')

Oversight of Credit Risk

The Credit Committee approves credit risk policies in respect of customer exposures and defines risk grading and underwriting criteria for the Group. It also provides guidance and makes recommendations in order to implement the Group's strategic plans for credit. The committee oversees the management of the credit portfolios, the post-origination risk management processes and the management of past due or impaired credit accounts

Customer and Conduct Committee ('CCC')

Oversight of Conduct Risk and Regulatory Compliance Risks

The CCC is responsible for overseeing the Group's conduct risk and regulatory compliance arrangements. The Committee considers conduct risk information such as details of conduct breaches; systems and procedures for delivering fair outcomes to customers (such as in relation to customer vulnerability); the product governance framework including product reviews and monitoring reports

Operational Risk Committee ('ORC')

Oversight of all Operational Risks

The ORC is responsible for overseeing the Group's operational risk and resilience arrangements, including those systems and controls intended to counter the risk that the Group might be used to further financial crime. The Committee remit includes risks arising from personnel, technology and environmental matters within the business

Model Review Group

Oversight of Model Risk

Model Review Group is a technical forum whose purpose is to review the performance of all models recorded on the Group's Model Inventory. Due to the nature of the risk the Model Review Group reports directly to the Model Risk Committee

To support this approach the Group operates a formal "three lines of defence" governance model. The three lines of defence governance model ensures appropriate responsibility and accountability is allocated to management. The three lines of defence model enables the Group to separate risk management activities between those that:

- Own and take risk, and implement controls (1st line)
- Oversee and challenge the 1st line, and provide risk management activity including overseeing the frameworks and standards for risk management and supporting controls (2nd line)
- Provide assurance that the "evaluate-respond-monitor" process is fit-for-purpose, and this is being carried out as intended (3rd line)

A summary of the three lines of defence model is outlined below.

Three lines of defence		
Line 1	Line 2	Line 3
Operational and support areas that own and manage risk within agreed limits	Risk and Compliance function designing, implementing and overseeing the ERMF and providing support and challenge	Internal Audit function independently assessing effectiveness of risk management

- The first line of defence ('Line 1'), comprises executive directors, managers and employees in operational and support areas. Line 1 has day-to-day responsibility for:
 - Risk identification, assessment, treatment, monitoring and reporting
 - Control implementation, and ongoing monitoring of operations
 - Management, escalation and reporting of risk issues against stated appetites

Risk Champions are appointed within all business areas to support the embedding of an effective risk culture across the Group

- *The second line of defence* ('Line 2') is provided by the independent risk and compliance function. This division is headed by the CRO, who is a member of the Group's Performance Executive Committee and ERC. The function is overseen by the RCC and its supporting executive committees. Line 2 provides support and independent challenge on all risk related issues specifically:
 - Developing and maintaining and monitoring effectiveness of the ERMF across the Group
 - Developing and maintaining supporting risk processes within that framework, ensuring these are consistent with the Board's risk appetite
 - Ensuring that risks identified by Line 1 are measured, monitored, controlled and reported consistently and on a timely basis
 - Maintaining open and constructive engagement with the regulatory authorities

The CRO attends meetings of the RCC and the Board to report directly to the directors on risk issues and has a close working relationship with the Chair of the RCC, an independent non-executive director.

- *The third line of defence* ('Line 3') is provided by the Internal Audit function which is responsible for reviewing the effectiveness of the first and second lines of defence. This function is overseen by the Audit Committee and led by the Internal Audit Director who reports directly to the Audit Committee Chair. Internal Audit provides independent assurance on:
 - Line 1 and Line 2 risk management activities
 - Effectiveness of the ERMF
 - The appropriateness and effectiveness of internal controls
 - Effectiveness of policy implementation

Policy and control

The Group's risk policies are an integral part of the ERMF. The policies are aligned to the principal risks and, in some cases, sub-risk categories. These are executive owned and:

- Set the principles for managing the risk
- Define the relevant risk appetite measures, metrics and thresholds
- Set the standards and minimum control requirements for the risk

It is the supporting minimum control requirements that set out the control environment for the effective management of the risk within appetite, and inform the business level key controls that need to be in operation. Under the Risk and Control Self-Assessment process these controls are then tested on a regular basis.

As part of the ongoing development of the ERMF an enhanced programme of risk assurance is being rolled out with particular focus on ensuring that the Second Line is resourced appropriately to provide assurance across all risk categories. Key during 2021-22 has been building up Second Line assurance capability in overseeing Financial Crime risk, ensuring it can provide robust independent oversight of First Line activities and consistent embedding and review of the Financial Crime controls across all business lines. As the ERMF matures, risk and controls oversight continues to be refined and evolved as part of the Group's commitment and investment in its overarching risk culture.

The Rulebook requires that changes in certain roles related to risk management should be disclosed in a firm's Pillar III reporting. There have been no changes of the Internal Audit Director, Enterprise Risk Director or Conduct and Compliance Director during the period.

(c) Declaration approved by the management body on the adequacy of the risk management arrangements (Point (e) of Article 435(1) CRR)

The Board, as the management body, monitors the Group's risk management and control systems and carries out an annual review of the effectiveness of control. Based on the current year's review it has been acknowledged that "the Group's control environment is felt to be adequate".

(d) Disclosure of the scope and nature of risk disclosure and/or measurement systems (Point (c) of Article 435(1) CRR)

The statement set out in 'c' above is reviewed by the Audit Committee and approved by the Board following an annual review of the effectiveness of control undertaken by Second and Third lines, and forms the annual attestation.

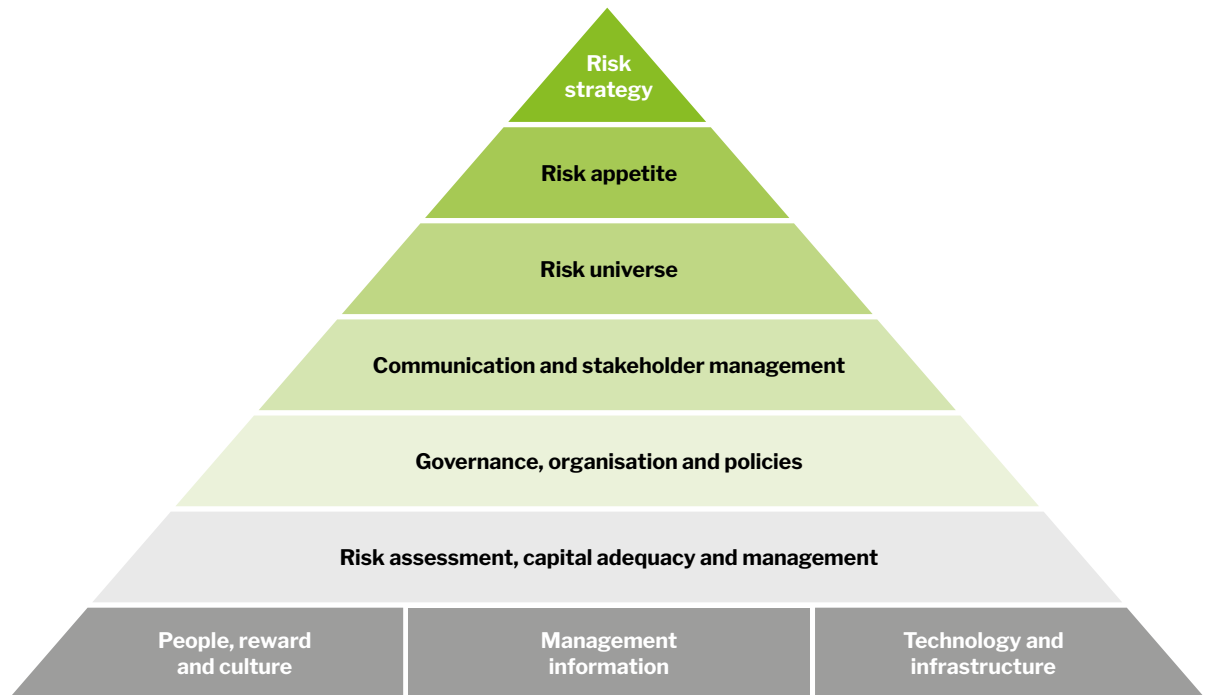
(e) **Disclosure information on the main features of risk disclosure and measurement systems (Point (c) of Article 435(1) CRR)**

The RCC's annual review of effectiveness of control includes assessment of the effectiveness of the Group's system of governance, risk management and control across the principal risk categories. The assessment is informed by information gathered from internal sources such as risk and control self-assessment and covers, but is not limited to: risk profiles, control effectiveness, risk event management and action management.

(f) **Strategies and processes to manage risks for each separate category of risk (Point (a) of Article 435(1) CRR)**

The ERMF sets out the strategy for risk management across the Group. The ERMF comprises a number of connected components that give a robust and integrated structure for consistent and effective risk management (see below).

Each principal risk policy sets out the strategy for managing that specific risk category and, where appropriate, the sub-risks.



ERMF component	Purpose	Documents and activities
Risk strategy	Establishes the Group's high-level approach to risk management through the ERMF. Also covers an agreed approach for assessing embeddedness of the ERMF through design and implementation of a Risk Maturity Assessment approach	<ul style="list-style-type: none"> ERMF Three Lines of Defence model Risk Maturity Framework and Assessments
Risk appetite	Defines the approach to setting and managing risk appetite through the Risk Appetite Framework. This covers risk appetite statements, measures, metrics and thresholds, which set out the levels of risk within which the Group is willing to operate. Establishes Key Risk Indicators and reporting requirements	<ul style="list-style-type: none"> Risk Appetite Framework Risk Appetite Measures and Tolerances Risk Appetite Adherence Tracking (aggregated)
Risk universe	Documents the types of risk that the Group faces and needs to manage. These include the principal risks and lower level risks to which business areas' risks align, to form the complete set of risks the Group is exposed to	<ul style="list-style-type: none"> Risk Categories Business Area Risks
Communication and stakeholder management	Sets out the communication approach to external stakeholders so that their interests and needs can be appropriately managed. Also covers the way external interests in the Group's approach to risk management are managed and addressed	<ul style="list-style-type: none"> Regulatory engagement Shareholder engagement Insurance programme Risk Division intranet site

Governance, organisation and policies	Sets out the Group's risk governance structure and terms of reference for each risk committee, aligned to the ERMF and relevant Senior Managers and Certification Regime ('SM&CR') responsibilities. Also establishes a set of risk policies and associated policy standards, covering the defined risk categories and setting out the requirements for managing each risk	<ul style="list-style-type: none"> • Management and Risk Oversight Committee Structures and Terms of Reference • Business Unit Risk Forums • Risk Policy Framework, inventory and templates • Risk Policies and Policy Standards
Risk assessment, capital adequacy and management	Defines a standardised approach to risk management identification, analysis and treatment, which facilitates the prioritising risk management activities. Facilitates appropriate capital allocation and an appropriate return on capital for the agreed risks	<ul style="list-style-type: none"> • Operational Risk Policy Standards (e.g. RCSA, Risk Events) • Risk registers • Risk Acceptance Process • ICAAP and Capital Allocations • Stress Testing Framework
People, reward and culture	Establishes a target state risk culture that is communicated and understood, enabling risk management activities to be delivered and recognised in the right way. Sets out clear risk management responsibilities and training approaches to enhance risk capability and support risk maturity	<ul style="list-style-type: none"> • Risk culture dashboard • Role profiles and risk responsibilities • Training (e.g. e-learning module) • Performance Management
Management information	Defines requirements for the recording and reporting of risks and control activities and for providing assurance to senior management on the adequacy of risk management arrangements	<ul style="list-style-type: none"> • Business Level Risk Reporting • Committee Reporting Packs, Risk Assurance Framework and reporting
Technology and infrastructure	Underpins risk management capability with the tools and systems to support effective implementation, operation and evolution and embedment of the risk management framework	<ul style="list-style-type: none"> • Risk Management Software • ERMF Document Library

Stress testing

Stress testing is an integral part to the Group's approach to risk management. Stress testing is a forward looking risk management tool used to quantify, evaluate and understand the potential impact of specified changes to risk factors on the financial strength and operational resilience of the Group, including its capital and liquidity positions.

The Group's Stress Testing Framework uses a multi-layered approach, from single portfolio (business line or product) level analysis to comprehensive group-wide stress testing, which is aligned to guidance and requirements from relevant regulatory and standard setting bodies.

Stress testing exercises are conducted at least annually to support internal capital and liquidity adequacy assessments (i.e. ICAAP and ILAAP). In addition, stress tests are performed alongside the corporate planning process, the assessment of going concern in support of external reporting requirements and on an ad hoc basis as required to support targeted reviews based on emerging or potential risks. The RCC approves the overall stress testing programme, its implementation and performance, providing review and challenge and ensuring that appropriate technical expertise is utilised.

(g) Information on the strategies and processes to manage, hedge and mitigate risks, as well as on the monitoring of the effectiveness of hedges and mitigants (Points (a) and (d) of Article 435(1) CRR)

The Group's ERMF describes the overarching approach to risk management including the various approaches to mitigating or hedging risks including: Mitigating, Accepting, Transferring and Avoiding, to ensure that all risks are managed within agreed levels of appetite. The application of these approaches is described in detail in the specific principal risk policy which defines and describes the relevant risk.

The governance over the management of each risk is well-defined within the policy and ultimately the processes for managing and monitoring the effectiveness of hedges and mitigants are overseen by the RCC.

As the ERMF embeds and is more widely understood, it is expected that further enhancements will be made to the framework principles to refine the approach and ensure consistency across all risk types. However, during the year significant progress has been made in design and execution of the ERMF in particular improving the processes and analysis around non-financial risks such as operational risk which are less mature in their approach to defining risk appetites than those for prudential risk or credit risk.

3.2. UK OVB – DISCLOSURE ON GOVERNANCE ARRANGEMENTS

(a) The number of directorships held by members of the management body (Point (a) of Article 435(2) CRR)

The number of other directorships of board members, outside the Group, disclosed in accordance with Article 435(2) point (a) are set out below. For the purposes of this disclosure directorships of related entities (eg two subsidiaries of the same group) are counted as a single appointment.

Director	Position	Number of external appointments
Robert D East	Chair of the Board	1
Nigel S Terrington	Chief Executive Officer	-
Richard J Woodman	Chief Financial Officer	2
Hugo R Tudor	Non-Executive Director	3
Peter A Hill	Non-Executive Director	1
Alison C M Morris	Non-Executive Director	2
Barbara A Ridpath	Non-Executive Director	2
Graeme H Yorston	Non-Executive Director	-
Tanvi P Davda	Non-Executive Director	2

(b) Information regarding the recruitment policy for the selection of members of the management body and their actual knowledge, skills and expertise (Point (b) of Article 435(2) CRR)

The Group has Board Composition and Succession plans in place to ensure that the Board is composed of persons who collectively are fit and proper to direct the Group's business with prudence and integrity; and possess an appropriate range of diverse backgrounds and balance of experience, knowledge and skills. The Human Resources department has a wider succession development plan for senior management roles across the Group, prioritising those positions likely to require recruitment within the next five years. Bespoke development plans are in place for strong performers identified as having high potential, and their progress is overseen by the Nomination Committee. During the period, this approach was extended to the senior management teams across each business area, providing further depth of development planning, which has been particularly beneficial in light of the tightening of the labour market seen across financial services this year.

The Board is mindful of the FCA Listing Rule requirements in relation to gender and ethnic diversity at board and executive management level, which are applicable to the Group from its financial year which began on 1 October 2022. These requirements are, and have been, a particular area of focus for the Board and the Nomination Committee. Material steps have already been taken to ensure that the Group will be fully compliant with these requirements for its year ending 30 September 2023 and thereafter.

The recruitment process for directors is designed to ensure the Board possesses a range of skills, noted below, and appropriate objectivity. It also involves detailed referencing and other checks to establish the candidate's credentials, including suitability, fitness and propriety. Regulatory approval is also required for certain board roles.

Board skills matrix

The Nomination Committee considered a revised skills matrix at its September 2022 meeting following the outputs from the Group's strategy event in June 2022. This was reviewed and subsequently approved by the Board in October 2022.

The matrix reflects the Group's strategic aim of becoming a technology-enabled specialist bank, and the skills considered include matters such as:

- Demonstrating sound knowledge of the UK macro environment affecting the retail banking environment
- The Group's key lending markets
- Understanding capital requirements and liquidity models
- Considering the application of digital technology in a financial services environment
- Customer insight, marketing and communications in the specialist lending sector
- Sustainability matters including financed, operational and supply chain environmental impacts, social responsibility and governance standards

The board skills matrix is reviewed annually by the Nomination Committee and forms the basis for continuing professional development and future succession plan requirements.

The skills and experience of the directors on the Board at September 2022 are as below:

Director	Experience	Specific areas of expertise*
Robert D East	<p>Robert has over 40 years experience in UK financial services, including at board level, as CEO and Chair.</p> <p>During his executive career he held senior roles at Barclays. He was also CEO of Cattles, where he led the restructuring and wind down of its operations from 2010 to 2016.</p> <p>He has held positions as Chair of Vanquis Bank, Skipton Building Society and Hampshire Trust Bank. He has previously served as a non-executive director on the boards of Provident Financial Group, Skipton Building Society and Hampshire Trust Bank, where he was also Chair of the Risk Committee.</p> <p>Robert holds a Diploma in Financial Studies (DipFS) from the London Institute of Banking and Finance and is an associate of the Chartered Institute of Bankers ('CIB')</p>	<ul style="list-style-type: none"> Strong retail and commercial banking expertise Detailed knowledge of the financial services sector Leadership of transformational change
Nigel S Terrington	<p>Nigel Terrington's early career began in investment banking, which included working for UBS where he trained as a credit analyst and ran its Financial Institutions Group. He joined the Group in 1987, becoming Treasurer shortly thereafter, before being appointed as Finance Director and then Chief Executive.</p> <p>He is a member of the Board of UK Finance and is the Chair of UK Finance's Specialist Bank Advisory Committee. Previously he was the Chair of the Council of Mortgage Lenders ('CML'), Chair of the Intermediary Mortgage Lenders Association ('IMLA'), Chair of the FLA Consumer Finance Division and a board member of the FLA. He is an associate of the CIB and in 2017 received an Honorary Doctorate from Birmingham City University for services to the finance industry.</p>	<ul style="list-style-type: none"> Overall, Nigel has expertise gained from long term, through-the-cycle, strategic and detailed understanding of the Group, its markets, its operations and its people. He saw the Group through both the 1992 and 2007/2008 financial crises and has led the diversification of the Group from a monoline buy-to-let lender to its current broadly-based specialist banking group.
Richard J Woodman	<p>Richard Woodman joined the Group in 1989 and has held various senior strategic and financial roles, including Director of Business Analysis and Planning and Managing Director of Idem Capital. He has taken a lead role in the Group's strategic development and, in particular, in the loan portfolio acquisition programme through Idem Capital and the Group's Mergers and Acquisitions ('M&A') programme.</p> <p>He is a member of the Chartered Institute of Management Accountants.</p>	<ul style="list-style-type: none"> Richard has broad expertise gained from long term, through-the-cycle, knowledge and understanding of the Group, its markets and its operations, in particular its financial management controls, liquidity, stress testing and capital management.
Hugo R Tudor	<p>Hugo Tudor spent 26 years in the fund management industry, originally with Schroders and most recently with BlackRock, covering a wide range of UK equities.</p> <p>He is a Chartered Financial Analyst and a Chartered Accountant.</p>	<ul style="list-style-type: none"> Detailed knowledge of the investor perspective A strong understanding of the executive remuneration market
Peter A Hill	<p>Peter Hill's career in financial services has spanned over 40 years, including eight years as CEO of Leeds Building Society between 2011 and 2019, where he previously held the role of Operations Director.</p> <p>He is currently Chair of Mortgage Brain Holdings Limited and was a non-executive director and Chair of the Risk Committee at Pure Retirement from 2019 to 2022</p> <p>He was Chair of the CML for three years and was a member of the board of UK Finance.</p> <p>Peter is a fellow of the Royal Society of Arts and an associate of the CIB.</p>	<ul style="list-style-type: none"> Specialist retail banking and mortgage lending expertise Detailed knowledge of the financial services sector

Alison C M Morris	<p>Alison is a chartered accountant and was a partner in PwC's financial services audit practice until the end of 2019.</p> <p>She joined PwC in 1982 and spent her career with the organisation in a range of internal and external audit roles across asset and wealth management, as well as banking and capital markets.</p> <p>She led audit projects for a range of banking clients, as well as other companies across the FTSE 100 and FTSE 250 and held a number of leadership roles within PwC, including sitting on the executive management team which led their audit practice.</p>	<ul style="list-style-type: none"> • Recent and relevant experience of the financial services sector • Detailed and specialist knowledge of accounting and auditing practice as well as of the audit market and accounting regulations
Barbara A Ridpath	<p>Barbara Ridpath has worked in finance for most of her career, in New York, London and Paris at the Federal Reserve Bank of New York, Standard & Poor's and JP Morgan.</p> <p>She was instrumental in the development of UK mortgage securitisation in the late 1980s and went on to lead the Standard & Poor's Ratings Group in Europe, the Middle East and Africa.</p> <p>Barbara is currently a non-executive director of ORX in Switzerland, a trade association for non-financial operating risk professionals (including cyber risk), and a director of ORX UK Limited.</p>	<ul style="list-style-type: none"> • Strong knowledge of the operation and implementation of operational risk management systems • Detailed knowledge of the securitisation market
Graeme H Yorston	<p>Graeme Yorston was Group Chief Executive of Principality Building Society, the 6th largest mutual in the UK. He has over 48 years experience in financial services having carried out a number of senior roles in Abbey National (now Santander) including IT Director for the Retail Bank, Regional Director and running a number of significant change programmes.</p> <p>Graeme has served on the CBI Council for Wales, the Board of Business in the Community in Wales and was HRH King Charles, Ambassador for BITC in Wales for two years. He was awarded Director of the Year in Wales by the Institute of Directors in 2016.</p> <p>Graeme is a Fellow of the CIB, holds an MBA from Warwick Business School and was awarded an Honorary Doctorate in Business Administration by Cardiff Metropolitan University in 2017.</p>	<ul style="list-style-type: none"> • Strong retail banking sector knowledge and experience particularly in marketing, communications and customer service • Detailed experience of overseeing Business Change and IT systems
Tanvi P Davda	<p>Tanvi brings a diverse range of skills and knowledge to the Board. With an executive career of more than 25 years, Tanvi began her career at Credit Suisse as a derivatives trader, then went on to work with IBM as a management consultant before joining ABN AMRO and then Barclays Wealth where she was Managing Director of Global Research and Investments.</p> <p>In 2015, Tanvi co-founded the wealth management firm, Saranac Partners, where she was CEO until 2021, and was a non-executive director until 2022.</p> <p>Tanvi's non-executive career has also included roles on the Board of Ofqual, the qualifications and examinations regulator, and the Student Loans Company.</p>	<ul style="list-style-type: none"> • Strong finance, advisory and regulatory experience

*All directors have broad knowledge of all areas of the Group's business, but the 'areas of expertise' highlight specific areas in relation to an individual's contribution to the Group's long-term sustainable success

(c) Information on the diversity policy with regard of the members of the management body (Point (c) of Article 435(2) CRR)

The Group recognises the importance of diversity, including gender and ethnic diversity, at all levels of the organisation. The Group strongly values diversity on the Board, not only of gender, but also of experience and background, recognising the contribution such diversity can make towards achieving the appropriate balance of skills and knowledge which an effective board of directors requires. The Board is pleased to have maintained a consistent female representation of 38.1% at board and senior management level (2021: 38.7%), exceeding the original Hampton-Alexander Review targets and the Group is aligned to the ongoing objectives of the FTSE Women Leaders Review.

When the Group signed up to HM Treasury's Women in Finance Charter initiative during 2016 its target was to achieve 35% female representation at senior management level by January 2022, increasing from 26% at the time the targets were set. On 1 October 2021, the Group met this target, and all its other Women in Finance targets, ahead of the deadline and is proud to have maintained this position throughout the year. The Group is committed to increasing the number of women in senior positions and has set a new headline Women in Finance target of 40% female representation at board and senior management level by 30 September 2025. Other, broader, targets are in the process of development.

The year ended 30 September 2022 saw the continuing development of the Group's Equality, Diversity and Inclusion ('EDI') Network and of the broadening of the EDI agenda beyond gender and ethnicity. In particular, the Group's part in the launch of the Progress Together initiative on socio-economic diversity in senior roles in UK financial services was a notable achievement.

60% of employees had provided diversity data for analysis at the beginning of the year and this increased to 73.1% by 30 September 2022. This supports the Group's culture and commitment to EDI matters and has helped shape EDI activities, including focused communication campaigns to raise awareness and celebrate differences, and to provide more development opportunities for under-represented groups. The board-level Nomination Committee is responsible for monitoring these activities and the Group's progress in this area.

During the year the Nomination Committee reviewed the Group's gender pay report and supporting analysis. It carefully examined changes since the previous report and considered the underlying challenges with the reporting rules, in the management structure and in the nature of strategic developments in the Group that make closing the gender pay gap difficult, as it is for other financial services firms. However, it was pleased to note the improvements in the headline rates achieved in the year, and this will continue to be a focus for the Nomination Committee and the Board.

(d) Information whether or not the institution has set up a separate risk committee and the frequency of the meetings (Point (d) of Article 435(2) CRR)

The Group has an established board-level Risk and Compliance Committee ('RCC') which meets at least four times per year. The RCC met four times in the financial year ended 30 September 2022.

In addition the CEO has established an ERC to oversee day to day risk management activity. This committee meets monthly.

(e) Description on the information flow on risk to the management body (Point (e) of Article 435(2) CRR)

The Board has overall responsibility for oversight of risk management but to ensure independence it delegates certain responsibilities to the RCC and the Audit Committee. For model risk management, the RCC delegates responsibility to the Model Risk Committee, as the Group's IRB designated committee. The board committees report to the Board on their activities.

Executive risk management is undertaken by the ERC, which is chaired by the CEO. The ERC delegates the management of certain risks to its sub-committees, which report to the ERC on their activities. The CEO provides regular updates to the RCC and Audit Committee on risk activities.

Reporting on all principal risks is provided to the RCC on a quarterly basis. The risk appetite framework is constructed to ensure that material risk information is escalated on a timely basis to allow the management body to have a clear view of any change to the risk profile.

4. Scope of application

This section sets out

- Analysis of differences between accounting and regulatory scopes of consolidation and mapping of financial statement categories with regulatory risk categories
- Sources of differences between regulatory exposure amounts and carrying values in the financial statements
- Differences in scope of consolidation

The Pillar III information includes all of the Group's subsidiary entities, but the Disclosure (CRR) Part requires this information to be given in a specified format, and for a reconciliation of the balances shown in the audited financial statements of the Group for the year, to some of the information used in the Pillar III reporting to be provided.

4.1. UK LI1 - DIFFERENCES BETWEEN ACCOUNTING AND REGULATORY SCOPES OF CONSOLIDATION AND MAPPING OF FINANCIAL STATEMENT CATEGORIES WITH REGULATORY RISK CATEGORIES

		a	b	c	d	e	f	g
		Carrying values as reported in published financial statements	Carrying values under scope of regulatory consolidation	Carrying value of items				
				Subject to the credit risk framework	Subject to the CCR framework	Subject to the securitisation framework	Subject to the market risk framework	Not subject to own funds requirements or subject to deduction from own funds
		£m	£m	£m	£m	£m	£m	£m
Breakdown by asset class according to the balance sheet in the published financial statements								
1	Cash – central banks	1,612.5	1,612.5	1,612.5	-	-	-	-
2	Cash – retail banks	318.4	318.4	318.4	-	-	-	-
3	Loans to customers	13,650.4	13,650.4	14,210.3	-	-	-	(559.9)
4	Derivative financial assets	779.0	779.0	-	779.0	-	-	-
5	Sundry assets	39.2	39.2	39.2	-	-	-	-
6	Current tax assets	5.4	5.4	5.4	-	-	-	-
7	Deferred tax assets	-	-	-	-	-	-	-
8	Retirement benefit obligations	7.1	7.1	-	-	-	-	7.1
9	Property, plant and equipment	71.4	71.4	71.4	-	-	-	-
10	Intangible assets	170.2	170.2	-	-	-	-	170.2
11	Total assets	16,653.6	16,653.6	16,257.2	779.0	-	-	(382.6)
Breakdown by liability classes according to the balance sheet in the published financial statements								
1	Short-term bank borrowings	0.4	0.4	-	-	-	-	0.4
2	Retail deposits	10,569.5	10,569.5	(99.7)	-	-	-	10,669.2
3	Derivative financial liabilities	102.1	102.1	-	102.1	-	-	-
4	Asset backed loan notes	409.3	409.3	-	-	-	-	409.3
5	Secured bank borrowings	586.0	586.0	-	-	-	-	586.0
6	Retail bond issuance	112.3	112.3	-	-	-	-	112.3
7	Corporate bond issuance	149.2	149.2	-	-	-	-	149.2
8	Central bank facilities	2,750.0	2,750.0	-	-	-	-	2,750.0
9	Sundry Liabilities	513.1	513.1	-	-	-	-	513.1
10	Current tax liabilities	-	-	-	-	-	-	-
11	Deferred tax liabilities	44.4	44.4	-	-	-	-	44.4
12	Retirement benefit obligations	-	-	-	-	-	-	-
13	Total liabilities	15,236.3	15,236.3	(99.7)	102.1	-	-	15,233.9

4.2. UK LI2 - MAIN SOURCES OF DIFFERENCES BETWEEN REGULATORY EXPOSURE AMOUNTS AND CARRYING VALUES IN FINANCIAL STATEMENTS

		a	b	c	d	e
		Total ¹	Items subject to			
			Credit risk framework	Securitisation framework	CCR framework	Market risk framework
		£m	£m	£m	£m	£m
1	Assets carrying value amount under the scope of regulatory consolidation (as per template LI1)	17,036.2	16,257.2	-	779.0	-
2	Liabilities carrying value amount under the regulatory scope of consolidation (as per template LI1)	2.4	(99.7)	-	102.1	-
3	Total net amount under the regulatory scope of consolidation	17,033.8	16,356.9	-	676.9	-
4	Off-balance-sheet amounts	1,307.9	1,307.9	-	-	-
5	Differences in valuations	0.9 ²	-	-	0.9 ²	
6	Differences due to different netting rules, other than those already included in row 2	-	-	-	-	
7	Differences due to consideration of provisions	63.6	63.6	-	-	
8	Differences due to the use of credit risk mitigation techniques ('CRMs')	(313.8)	(70.7)	-	(243.1)	
9	Differences due to credit conversion factors	(1,161.8)	(1,161.8)	-	-	
10	Differences due to Securitisation with risk transfer	-	-	-	-	
11	Other differences	(36.3)	(36.3)	-	-	
12	Exposure amounts considered for regulatory purposes	16,894.3	16,459.6	-	434.7	-

Notes:

¹Differences are explained in section 4.36

²Differences in valuations, being the Prudent Valuation Adjustment ('PVA') calculated in section 4.6 UK PV1

4.3. UK LIA - EXPLANATIONS OF DIFFERENCES BETWEEN ACCOUNTING AND REGULATORY EXPOSURE AMOUNTS

(a) Differences between columns (a) and (b) in template UK LI1 (Article 436(b) CRR)

There are no differences between the columns because no entities are derecognised from the accounting balance sheet for regulatory purposes.

(b) Qualitative information on the main sources of differences between the accounting and regulatory scope of consolidation shown in template UK LI2 (Article 436(d) CRR)

The amounts considered for regulatory reporting purposes shown in template UK LI2 differ to the carrying values under the regulatory scope of consolidation as a result of

- Inclusion of off-balance sheet amounts in respect of lending pipelines in line with UK CRR article 111, as shown in row 4 of UK LI2, reduced by credit conversion factors (row 9)
- Adding IFRS 9 provisions to present gross exposure (row 7)
- Effect of credit risk mitigation techniques (row 8)
- Prudent valuation adjustment outlined in section 4.6, template UK PV1

Credit risk mitigation techniques primarily relate to government guarantees on BBLS, CBILS and RLS loans within retail exposures and the effect of the consideration of collateral in the SA-CCR calculation for derivative exposures.

4.4. UK LI3 - OUTLINE OF THE DIFFERENCES IN THE SCOPES OF CONSOLIDATION (ENTITY BY ENTITY)

a	b	c	d	e	f	g	h
Name of the entity	Method of accounting consolidation	Method of regulatory consolidation					Description of the entity
		Full consolidation	Proportional consolidation	Equity method	Neither consolidated or deducted	Deducted	
Paragon Bank PLC	Full consolidation	X					Deposit taking, residential mortgages and loan and vehicle finance
Paragon Car Finance Limited	Full consolidation	X					Vehicle finance
Idem Capital Holdings Limited	Full consolidation	X					Intermediate holding company
Moorgate Servicing Limited	Full consolidation	X					Intermediate holding company
The Business Mortgage Company Limited	Full consolidation	X					Mortgage Broker
Paragon Mortgages (No. 11) PLC	Full consolidation	X					Residential Mortgages
Paragon Mortgages (No. 12) PLC	Full consolidation	X					Residential Mortgages
Paragon Mortgages (No. 13) PLC	Full consolidation	X					Residential Mortgages
Paragon Mortgages (No. 14) PLC	Full consolidation	X					Residential Mortgages
Paragon Mortgages (No. 15) PLC	Full consolidation	X					Residential Mortgages
Colonial Finance (UK) Limited	Full consolidation	X					Non-trading
Earlswood Finance Limited	Full consolidation	X					Non-trading
Herbert (1) PLC	Full consolidation	X					Non-trading
Herbert (2) PLC	Full consolidation	X					Non-trading
Herbert (4) PLC	Full consolidation	X					Non-trading
Herbert (5) PLC	Full consolidation	X					Non-trading
Herbert (6) PLC	Full consolidation	X					Non-trading
Herbert (7) PLC	Full consolidation	X					Non-trading
Herbert (8) PLC	Full consolidation	X					Non-trading

Herbert (9) PLC	Full consolidation	X					Non-trading
Herbert (10) PLC	Full consolidation	X					Non-trading
Paragon Car Finance (1) Limited	Full consolidation	X					Non-trading
Paragon Dealer Finance Limited	Full consolidation	X					Non-trading
Paragon Loan Finance (No. 3) Limited	Full consolidation	X					Non-trading
Paragon Mortgages (No. 5) PLC	Full consolidation	X					Non-trading
Paragon Pension Investments GP Limited	Full consolidation	X					Non-trading
Paragon Pension Plan Trustees Limited	Full consolidation	X					Non-trading
Paragon Personal Finance (1) Limited	Full consolidation	X					Non-trading
Paragon Third Funding Limited	Full consolidation	X					Non-trading
Paragon Vehicle Contracts Limited	Full consolidation	X					Non-trading
Plymouth Funding Limited	Full consolidation	X					Non-trading
Universal Credit Limited	Full consolidation	X					Non-trading
Yorkshire Freeholds Limited	Full consolidation	X					Non-trading
Yorkshire Leaseholds Limited	Full consolidation	X					Non-trading
Paragon Finance PLC	Full consolidation	X					Residential mortgages and asset administration
Mortgage Trust Limited	Full consolidation	X					Residential mortgages
Paragon Mortgages Limited	Full consolidation	X					Residential mortgages
Paragon Mortgages (2010) Limited	Full consolidation	X					Residential mortgages
Mortgage Trust Services PLC	Full consolidation	X					Residential mortgages and asset administration

Paragon Second Funding Limited	Full consolidation	X					Residential mortgages and loan and vehicle finance
Paragon Asset Finance Limited	Full consolidation	X					Holding company and portfolio administration
Paragon Business Finance PLC	Full consolidation	X					Asset finance
Paragon Commercial Finance Limited	Full consolidation	X					Asset finance
Paragon Development Finance Limited	Full consolidation	X					Development Finance
Paragon Development Finance Services Limited	Full consolidation	X					Development Finance
Paragon Technology Finance Limited	Full consolidation	X					Asset finance
PBAF Acquisitions Limited	Full consolidation	X					Residential mortgages and loan finance
PBAF (No.1) Limited	Full consolidation	X					Holding company
Premier Asset Finance Limited	Full consolidation	X					Asset finance broker
Specialist Fleet Services Limited	Full consolidation	X					Asset finance and contract hire
City Business Finance Limited	Full consolidation	X					Non-trading
Collett Transport Services	Full consolidation	X					Non-trading
Fineline Holdings Limited	Full consolidation	X					Non-trading
Fineline Media Finance Limited	Full consolidation	X					Non-trading
Homer Management Limited	Full consolidation	X					Non-trading
Lease Portfolio Management Limited	Full consolidation	X					Non-trading
Paragon Options PLC	Full consolidation	X					Non-trading
State Securities Holdings Limited	Full consolidation	X					Non-trading
State Security Limited	Full consolidation	X					Non-trading

Moorgate Loan Servicing Limited	Full consolidation	X					Asset Administration
Idem Capital Securities Limited	Full consolidation	X					Asset Investment
Paragon Personal Finance Limited	Full consolidation	X					Consumer loan finance
Redbrick Survey and Valuation Limited	Full consolidation	X					Surveyors and property consulting
Buy to Let Direct Limited	Full consolidation	X					Non-trading
Moorgate Asset Administration Limited	Full consolidation	X					Non-trading
TBMC Group Limited	Full consolidation	X					Non-trading
The Business Mortgage Company Services Limited	Full consolidation	X					Non-trading
Paragon Seventh Funding Limited	Full consolidation	X					Residential Mortgages
Paragon Mortgages (No. 25) Holdings Limited	Full consolidation	X					Holding Company
Paragon Mortgages (No. 25) PLC	Full consolidation	X					Residential Mortgages
Paragon Mortgages (No. 26) Holdings Limited	Full consolidation	X					Holding Company
Paragon Mortgages (No. 26) PLC	Full consolidation	X					Residential Mortgages
Paragon Mortgages (No. 27) Holdings Limited	Full consolidation	X					Holding Company
Paragon Mortgages (No. 27) PLC	Full consolidation	X					Residential Mortgages
Paragon Mortgages (No. 28) Holdings Limited	Full consolidation	X					Holding Company
Paragon Mortgages (No. 28) PLC	Full consolidation	X					Residential Mortgages
Arianty Holdings Limited	Full consolidation	X					Holding Company
Arianty No. 1 PLC	Full consolidation	X					Non-trading

Paragon Fifth Funding Limited	Full consolidation	X					Non-trading
Paragon Sixth Funding Limited	Full consolidation	X					Non-trading
Paragon Mortgages (No. 18) Holdings Limited	Full consolidation	X					Non-trading
Paragon Mortgages (No. 19) Holdings Limited	Full consolidation	X					Non-trading
Paragon Mortgages (No. 20) Holdings Limited	Full consolidation	X					Non-trading
Paragon Mortgages (No. 21) Holdings Limited	Full consolidation	X					Non-trading
Paragon Mortgages (No. 22) Holdings Limited	Full consolidation	X					Non-trading
Paragon Mortgages (No. 23) Holdings Limited	Full consolidation	X					Non-trading
Paragon Mortgages (No. 24) Holdings Limited	Full consolidation	X					Non-trading

4.5. UK LIB - OTHER QUALITATIVE INFORMATION ON THE SCOPE OF APPLICATION

(a) Impediment to the prompt transfer of own funds or to the repayment of liabilities within the group (Article 436(f) CRR)

The Bank's requirement to maintain regulatory capital and liquid resources above a level determined by the PRA could restrict its ability to make dividend payments or make loan repayments to other group entities. There are no other current or foreseen material practical or legal impediments to the prompt transfer of capital resources or repayments of liabilities between the Company and its subsidiary undertakings

(b) Subsidiaries not included in the consolidation with own funds less than required (Article 436(g) CRR)

No subsidiaries are excluded from the consolidation

(c) Use of derogation referred to in Article 7 CRR or individual consolidation method laid down in Article 9 CRR (Article 436(h) CRR)

The Group is regulated by the PRA and the FCA. Following the UK's withdrawal from the European Union the CRD V framework continues to apply to Paragon Banking Group and its subsidiary undertakings (together, the 'Group'), as recognised on the Bank of England's website: Capital Requirements Directive | Bank of England.

The Group is required to calculate and maintain regulatory capital on both a group basis and on an individual consolidation basis. There are no differences between the basis of consolidation of the Group for accounting and prudential purposes. Full details of the Group's subsidiary undertakings are included in template UKLI3.

The Group has permission to use the individual consolidation method, with approval granted on 2 August 2022 by the PRA.

(d) Aggregate amount by which the actual own funds are less than required in all subsidiaries that are not included in the consolidation (Article 436(g) CRR)

Not applicable to the Group as there are no excluded subsidiaries.

4.6. UK PV1: PRUDENT VALUATION ADJUSTMENTS ('PVA')

Template PV1 has not been presented as, per Annex VI instructions, it is only applicable to those institutions applying the Core Approach for the determination of the additional valuation adjustment for prudent valuation in accordance with Chapter III of the PRA rulebook, Trading Book (CRR) Part, Section 4, whereas the Group utilises the Simplified Approach. Under this approach, PVA is calculated as 0.1% of the sum of the absolute value of fair-valued assets and liabilities.

In accordance with Article 436 (e) the breakdown of the Group's PVA has been presented below:

	30 Sept 22
	£m
Fair value swap assets	779.0
Short term investments	-
Contingent consideration	2.2
Fair value swap liabilities	102.1
Total	883.3
Prudent Valuation Adjustment (0.1%)	0.9

The PVA is added to the credit risk framework net amount under the regulatory scope of consolidation in section 4 template UK LI2 in order to derive the exposure amounts considered for regulatory purposes. It is also deducted from the Group's capital for regulatory purposes (Section 5 – Table UK CC1 (line 7)).

5. Own funds

This section sets out

- Composition of regulatory own funds
- Reconciliation of regulatory own funds to balance sheet in the audited financial statements
- Main features of regulatory own funds instruments and eligible liabilities instruments

Regulatory capital is the amount which the Group has available to meet its regulatory and operational requirements. Its reconciliation to balances in the Group's financial statements is shown in tables UK CC1 and UK CC2, with the instruments comprising that capital described in detail in table UK CAA.

5.1. UK CC1 – COMPOSITION OF REGULATORY OWN FUNDS (2022)

References in column (b) below are to table UK CC2 in Section [5.2].

		a	b
		30 Sep 22	Source based on reference numbers / letters of the balance sheet under the regulatory scope of consolidation
		£m	£m
Common Equity Tier 1 (CET1) capital: instruments and reserves			
1	Capital instruments and the related share premium accounts	312.5	(a)
	<i>of which: ordinary shares</i>	312.5	(a)
2	Retained earnings	1,151.2	(a)
3	Accumulated other comprehensive income (and other reserves)	(46.4)	(a)
UK 3a	Funds for general banking risk	-	
4	Amount of qualifying items referred to in Article 484 (3) CRR and the related share premium accounts subject to phase out from CET1	-	
5	Minority interests (amount allowed in consolidated CET1)	-	
UK 5a	Independently reviewed interim profits net of any foreseeable charge or dividend	(44.9)	
6	Common Equity Tier 1 (CET1) capital before regulatory adjustments	1,372.4	
Common Equity Tier 1 (CET1) capital: regulatory adjustments			
7	Additional value adjustments (negative amount)	(0.9)	Section 4.6
8	Intangible assets (net of related tax liability) (negative amount)	(170.2)	(b)
9	Empty set in the UK		
10	Deferred tax assets that rely on future profitability excluding those arising from temporary differences (net of related tax liability where the conditions in Article 38 (3) CRR are met) (negative amount)	-	
11	Fair value reserves related to gains or losses on cash flow hedges of financial instruments that are not valued at fair value	-	
12	Negative amounts resulting from the calculation of expected loss amounts	-	

13	Any increase in equity that results from securitised assets (negative amount)	-	
14	Gains or losses on liabilities valued at fair value resulting from changes in own credit standing	-	
15	Defined-benefit pension fund assets (negative amount)	(5.3)	
16	Direct, indirect and synthetic holdings by an institution of own CET1 instruments (negative amount)	-	
17	Direct, indirect and synthetic holdings of the CET 1 instruments of financial sector entities where those entities have reciprocal cross holdings with the institution designed to inflate artificially the own funds of the institution (negative amount)	-	
18	Direct, indirect and synthetic holdings by the institution of the CET1 instruments of financial sector entities where the institution does not have a significant investment in those entities (amount above 10% threshold and net of eligible short positions) (negative amount)	-	
19	Direct, indirect and synthetic holdings by the institution of the CET1 instruments of financial sector entities where the institution has a significant investment in those entities (amount above 10% threshold and net of eligible short positions) (negative amount)	-	
20	Empty set in the UK		
UK 20a	<i>Exposure amount of the following items which qualify for a RW of 1250%, where the institution opts for the deduction alternative</i>	-	
UK 20b	<i>of which: qualifying holdings outside the financial sector (negative amount)</i>	-	
UK 20c	<i>of which: securitisation positions (negative amount)</i>	-	
UK 20d	<i>of which: free deliveries (negative amount)</i>	-	
21	Deferred tax assets arising from temporary differences (amount above 10% threshold, net of related tax liability where the conditions in Article 38 (3) CRR are met) (negative amount)	-	
22	Amount exceeding the 17.65% threshold (negative amount)	-	
23	<i>of which: direct, indirect and synthetic holdings by the institution of the CET1 instruments of financial sector entities where the institution has a significant investment in those entities</i>	-	
24	Empty set in the UK		
25	<i>of which: deferred tax assets arising from temporary differences</i>	-	
UK 25a	Losses for the current financial year (negative amount)	-	
UK 25b	Foreseeable tax charges relating to CET1 items except where the institution suitably adjusts the amount of CET1 items insofar as such tax charges reduce the amount up to which those items may be used to cover risks or losses (negative amount)	-	
26	Empty set in the UK		
27	Qualifying AT1 deductions that exceed the AT1 items of the institution (negative amount)	-	
UK 27a	Other regulatory adjustments to CET1 capital (including IFRS 9 transitional adjustments when relevant)	25.8	
28	Total regulatory adjustments to Common Equity Tier 1 ('CET1')	(150.6)	
29	Common Equity Tier 1 ('CET1') capital	1,221.8	
Additional Tier 1 (AT1) capital: instruments			
30	Capital instruments and the related share premium accounts	-	
31	<i>of which: classified as equity under applicable accounting standards</i>	-	
32	<i>of which: classified as liabilities under applicable accounting standards</i>	-	
33	Amount of qualifying items referred to in Article 484 (4) CRR and the related share premium accounts subject to phase out from AT1 as described in Article 486(3) CRR	-	
UK 33a	Amount of qualifying items referred to in Article 494a(1) CRR subject to phase out from AT1	-	
UK 33b	Amount of qualifying items referred to in Article 494b(1) CRR subject to phase out from AT1	-	

34	Qualifying Tier 1 capital included in consolidated AT1 capital (including minority interests not included in row 5) issued by subsidiaries and held by third parties	-	
35	<i>of which: instruments issued by subsidiaries subject to phase out</i>	-	
36	Additional Tier 1 ('AT1') capital before regulatory adjustments	-	
Additional Tier 1 ('AT1') capital: regulatory adjustments			
37	Direct, indirect and synthetic holdings by an institution of own AT1 instruments (negative amount)	-	
38	Direct, indirect and synthetic holdings of the AT1 instruments of financial sector entities where those entities have reciprocal cross holdings with the institution designed to inflate artificially the own funds of the institution (negative amount)	-	
39	Direct, indirect and synthetic holdings of the AT1 instruments of financial sector entities where the institution does not have a significant investment in those entities (amount above 10% threshold and net of eligible short positions) (negative amount)	-	
40	Direct, indirect and synthetic holdings by the institution of the AT1 instruments of financial sector entities where the institution has a significant investment in those entities (net of eligible short positions) (negative amount)	-	
41	Empty set in the UK		
42	Qualifying T2 deductions that exceed the T2 items of the institution (negative amount)	-	
42a	Other regulatory adjustments to AT1 capital	-	
43	Total regulatory adjustments to Additional Tier 1 ('AT1') capital	-	
44	Additional Tier 1 ('AT1') capital	-	
45	Tier 1 capital (T1 = CET1 + AT1)	1,221.8	
Tier 2 ('T2') capital: instruments			
46	Capital instruments and the related share premium accounts	150.0	(c)
47	Amount of qualifying items referred to in Article 484 (5) CRR and the related share premium accounts subject to phase out from T2 as described in Article 486(4) CRR	-	
UK 47a	Amount of qualifying items referred to in Article 494a (2) CRR subject to phase out from T2	-	
UK 47b	Amount of qualifying items referred to in Article 494b (2) CRR subject to phase out from T2	-	
48	Qualifying own funds instruments included in consolidated T2 capital (including minority interests and AT1 instruments not included in rows 5 or 34) issued by subsidiaries and held by third parties	-	
49	<i>of which: instruments issued by subsidiaries subject to phase out</i>	-	
50	Credit risk adjustments	-	
51	Tier 2 ('T2') capital before regulatory adjustments	150.0	(c)
Tier 2 ('T2') capital: regulatory adjustments			
52	Direct, indirect and synthetic holdings by an institution of own T2 instruments and subordinated loans (negative amount)	-	
53	Direct, indirect and synthetic holdings of the T2 instruments and subordinated loans of financial sector entities where those entities have reciprocal cross holdings with the institution designed to inflate artificially the own funds of the institution (negative amount)	-	
54	Direct, indirect and synthetic holdings of the T2 instruments and subordinated loans of financial sector entities where the institution does not have a significant investment in those entities (amount above 10% threshold and net of eligible short positions) (negative amount)	-	
54a	Empty set in the UK		
55	Direct, indirect and synthetic holdings by the institution of the T2 instruments and subordinated loans of financial sector entities where the institution has a significant investment in those entities (net of eligible short positions) (negative amount)	-	

56	Empty set in the UK		
UK 56a	Qualifying eligible liabilities deductions that exceed the eligible liabilities items of the institution (negative amount)	-	
UK 56b	Other regulatory adjustments to T2 capital	-	
57	Total regulatory adjustments to Tier 2 ('T2') capital	-	
58	Tier 2 ('T2') capital	150.0	
59	Total capital (TC = T1 + T2)	1,371.8	
60	Total risk exposure amount	7,515.0	
Capital ratios and buffers			
61	Common Equity Tier 1 (as a percentage of total risk exposure amount)	16.3%	
62	Tier 1 (as a percentage of total risk exposure amount)	16.3%	
63	Total capital (as a percentage of total risk exposure amount)	18.3%	
64	Institution CET1 overall capital requirement (CET1 requirement in accordance with Article 92 (1) CRR, plus additional CET1 requirement which the institution is required to hold in accordance with point (a) of Article 104(1) CRD, plus combined buffer requirement in accordance with Article 128(6) CRD) expressed as a percentage of risk exposure amount)	10.5%	
65	<i>of which: capital conservation buffer requirement</i>	2.5%	
66	<i>of which: countercyclical buffer requirement</i>	0.0%	
67	<i>of which: systemic risk buffer requirement</i>	0.0%	
UK 67a	<i>of which: Global Systemically Important Institution (G-SII) or Other Systemically Important Institution (O-SII) buffer</i>	0.0%	
68	Common Equity Tier 1 available to meet buffers (as a percentage of risk exposure amount)	7.5%	
69	[non relevant in UK]		
70	[non relevant in UK]		
71	[non relevant in UK]		
Amounts below the thresholds for deduction (before risk weighting)			
72	Direct and indirect holdings of own funds and eligible liabilities of financial sector entities where the institution does not have a significant investment in those entities (amount below 10% threshold and net of eligible short positions)	-	
73	Direct and indirect holdings by the institution of the CET1 instruments of financial sector entities where the institution has a significant investment in those entities (amount below 17.65% thresholds and net of eligible short positions)	-	
74	Empty set in the UK		
75	Deferred tax assets arising from temporary differences (amount below 17.65% threshold, net of related tax liability where the conditions in Article 38 (3) CRR are met)	-	
Applicable caps on the inclusion of provisions in Tier 2			
76	Credit risk adjustments included in T2 in respect of exposures subject to standardised approach (prior to the application of the cap)	-	
77	Cap on inclusion of credit risk adjustments in T2 under standardised approach	-	
78	Credit risk adjustments included in T2 in respect of exposures subject to internal ratings-based approach (prior to the application of the cap)	-	
79	Cap for inclusion of credit risk adjustments in T2 under internal ratings-based approach	-	
Capital instruments subject to phase-out arrangements (only applicable between 1 Jan 2014 and 1 Jan 2022)			
80	Current cap on CET1 instruments subject to phase out arrangements	-	
81	Amount excluded from CET1 due to cap (excess over cap after redemptions and maturities)	-	
82	Current cap on AT1 instruments subject to phase out arrangements	-	

83	Amount excluded from AT1 due to cap (excess over cap after redemptions and maturities)	-	
84	Current cap on T2 instruments subject to phase out arrangements	-	
85	Amount excluded from T2 due to cap (excess over cap after redemptions and maturities)	-	

5.2. UK CC2 - RECONCILIATION OF REGULATORY OWN FUNDS TO BALANCE SHEET IN THE AUDITED FINANCIAL STATEMENTS

		a	c
		Balance sheet as in published financial statements ¹	Reference
		30 Sept 22	
		£m	
Assets - Breakdown by asset class according to the balance sheet in the published financial statements			
1	Cash - central banks	1,612.5	
2	Cash - retail banks	318.4	
3	Loans to customers	13,650.4	
4	Derivative financial assets	779.0	
5	Sundry assets	39.2	
6	Current tax assets	5.4	
7	Deferred tax assets	-	
8	Retirement benefit obligations	7.1	
9	Property, plant and equipment	71.4	
10	Intangible assets	170.2	(b)
11	Total assets	16,653.6	
Liabilities - Breakdown by liability class according to the balance sheet in the published financial statements			
1	Short-term bank borrowings	0.4	
2	Retail deposits	10,569.5	
3	Derivative financial liabilities	102.1	
4	Asset backed loan notes	409.3	
5	Secured bank borrowings	586.0	
6	Retail bond issuance	112.3	
7	Corporate bond issuance	149.2	(c)
8	Central bank facilities	2,750.0	
9	Sundry liabilities	513.1	
10	Current tax liabilities	-	
11	Deferred tax liabilities	44.4	
12	Retirement benefit obligations	-	
13	Total liabilities	15,236.3	
Shareholders' Equity			
1	Called up share capital	241.4	(a)
2	Reserves	1,223.9	(a)
3	Own Shares	(48.0)	(a)
4	Total shareholders' equity	1,417.3	(a)

Note:

¹The Group has the same statutory and regulatory scope of consolidation. Therefore, 'column b - Under regulatory scope of consolidation' has not been presented (as it is equal to 'column a')

5.3. UK CCA: MAIN FEATURES OF REGULATORY OWN FUNDS INSTRUMENTS AND ELIGIBLE LIABILITIES INSTRUMENTS

The 2021 Corporate Bond is shown at reference (b) in table UK CC2.

		1	2
		Equity	2021 Corporate Bond
1	Issuer	Paragon Banking Group PLC	Paragon Banking Group PLC
2	Unique identifier (eg CUSIP, ISIN or Bloomberg identifier for private placement)	ISIN GB00B2NGPM57	ISIN XS2312738599
2a	Public or private placement	Public	Public
3	Governing law(s) of the instrument	England and Wales	England and Wales
3a	Contractual recognition of write down and conversion powers of resolution authorities	N/A	N/A
Regulatory treatment			
4	Current treatment taking into account, where applicable, transitional CRR rules	N/A	N/A
5	Post-transitional CRR rules	Common Equity Tier-1	Tier-2
6	Eligible at solo/(sub-)consolidated/ solo&(sub-) consolidated	Solo and (sub) consolidated	Solo and (sub) consolidated
7	Instrument type (types to be specified by each jurisdiction)	Ordinary Shares	Corporate Bond
8	Amount recognised in regulatory capital or eligible liabilities (Currency in million, as of most recent reporting date)	£312.5m	£150.0m
9	Nominal amount of instrument	£241.4m	£150.0m
UK 9a	Issue price	Nominal value £1 †	Par
UK 9b	Redemption price	N/A	Par
10	Accounting classification	Shareholders' Equity	Liability-amortised cost
11	Original date of issuance	Original listing date 15 May 1989 *	25 March 2021
12	Perpetual or dated	Perpetual	Dated
13	Original maturity date	No maturity	25 September 2031
14	Issuer call subject to prior supervisory approval	No	Yes
15	Optional call date, contingent call dates and redemption amount	N/A	Redeemable by the Issuer on any day (from and including) 25 June 2026 Tax and Regulatory calls also
16	Subsequent call dates, if applicable	N/A	N/A
Coupon / dividends			
17	Fixed or floating dividend/coupon	Floating	Fixed‡
18	Coupon rate and related index	N/A	4.375%
19	Existence of a dividend stopper	N/A	No
UK 20a	Fully discretionary, partially discretionary or mandatory (in terms of timing)	Fully discretionary	Mandatory
UK 20b	Fully discretionary, partially discretionary or mandatory (in terms of amount)	Fully discretionary	Mandatory
21	Existence of step up or other incentive to redeem	No	No
22	Non-cumulative or cumulative	Non-cumulative	Cumulative
23	Convertible or non-convertible	Non-convertible	Non-convertible
24	If convertible, conversion trigger(s)	N/A	N/A
25	If convertible, fully or partially	N/A	N/A
26	If convertible, conversion rate	N/A	N/A
27	If convertible, mandatory or optional conversion	N/A	N/A
28	If convertible, specify instrument type convertible into	N/A	N/A
29	If convertible, specify issuer of instrument it converts into	N/A	N/A
30	Write-down features	N/A	No

31	If write-down, write-down trigger(s)	N/A	N/A
32	If write-down, full or partial	N/A	N/A
33	If write-down, permanent or temporary	N/A	N/A
34	If temporary write-down, description of write-up mechanism	N/A	N/A
34a	Type of subordination (only for eligible liabilities)	N/A	N/A
UK 34b	Ranking of the instrument in normal insolvency proceedings	1	N/A
35	Position in subordination hierarchy in liquidation (specify instrument type immediately senior to instrument)	2	N/A
36	Non-compliant transitioned features	No	No
37	If yes, specify non-compliant features	N/A	N/A
37a	Link to the full term and conditions of the instrument (signposting)	Web link	Web link

† Shares have been issued at various different premiums from time to time.

* This is the date of the first listing of the Company's ordinary shares. There have been restructurings since that date and further shares have been issued from time to time.

‡ Subject to market based repricing five years after issue.

Full terms of business for the Group's Common Equity Tier-1 and Tier-2 instruments are provided on the Investor Relations section of its corporate website www.paragonbankinggroup.co.uk.

6. Countercyclical capital buffer

This section sets out

- Geographical distribution of credit exposures relevant for the calculation of the countercyclical buffer
- Amount of institution specific countercyclical buffer

The Countercyclical capital Buffer ('CCyB') is set on a nation-by-nation basis, and applies, based on the location of the relevant assets. However all of the Group's assets are located in the UK.

6.1. UK CCYB1 - GEOGRAPHICAL DISTRIBUTION OF CREDIT EXPOSURES RELEVANT FOR THE CALCULATION OF THE COUNTERCYCLICAL BUFFER

£m		a		b		c		d		e		f		g			h		i		j		k		l		m	
		General credit exposures		Relevant credit exposures – Market risk		Securitisation exposures		Total exposure value		Own fund requirements			Total	Risk-weighted exposure amounts	Own fund requirements weights (%)	Counter cyclical buffer rate (%)												
		Exposure value under the standardised approach	Exposure value under the IRB approach	Sum of long and short positions of trading book exposures for SA	Value of trading book exposures for internal models	Exposure value for non-trading book			Relevant credit risk exposures - Credit risk	Relevant credit exposures – Market risk	Relevant credit exposures – Securitisation positions in the non-trading book																	
		£m	£m	£m	£m	£m	£m	£m	£m	£m	£m	£m	£m	£m	£m	£m	£m	£m	£m	£m	£m	£m	£m	£m	£m	£m	£m	
010	Breakdown by country																											
	United Kingdom	18,443.9	-	-	-	-	18,443.9	-	541.1	-	-	541.1	6,763.3	100%	0.0%													
020	Total	18,443.9	-	-	-	-	18,443.9	-	541.1	-	-	541.1	6,763.3	100%														

6.2. UK CCYB2 - AMOUNT OF INSTITUTION-SPECIFIC COUNTERCYCLICAL CAPITAL BUFFER

		a
1	Total risk exposure amount (£m)	7,515.0
2	Institution specific countercyclical capital buffer rate	0.0%
3	Institution specific countercyclical capital buffer requirement (£m)	0.0

7. Leverage ratio

This section sets out

- Summary reconciliation of accounting assets and leverage ratio exposures
- Leverage ratio disclosure
- On-balance sheet exposures
- Leverage qualitative information

Leverage is the relationship of a firm's capital to its total balance sheet assets (not adjusted for risk), both adjusted to a regulatory basis.

7.1. UK LR1 - LRSUM: SUMMARY RECONCILIATION OF ACCOUNTING ASSETS AND LEVERAGE RATIO EXPOSURES

		a
		Applicable amount
		£m
1	Total assets as per published financial statements	16,653.6
2	Adjustment for entities which are consolidated for accounting purposes but are outside the scope of prudential consolidation	-
3	(Adjustment for securitised exposures that meet the operational requirements for the recognition of risk transference)	-
4	(Adjustment for exemption of exposures to central banks)	(1,643.7)
5	(Adjustment for fiduciary assets recognised on the balance sheet pursuant to the applicable accounting framework but excluded from the total exposure measure in accordance with point (i) of Article 429a(1) of the CRR)	-
6	Adjustment for regular-way purchases and sales of financial assets subject to trade date accounting	-
7	Adjustment for eligible cash pooling transactions	-
8	Adjustment for derivative financial instruments	(344.3)
9	Adjustment for securities financing transactions (SFTs)	-
10	Adjustment for off-balance sheet items (i.e. conversion to credit equivalent amounts of off-balance sheet exposures)	213.8
11	(Adjustment for prudent valuation adjustments and specific and general provisions which have reduced tier 1 capital (leverage))	-
UK 11a	(Adjustment for exposures excluded from the total exposure measure in accordance with point (c) of Article 429a(1) of the CRR)	-
UK 11b	(Adjustment for exposures excluded from the total exposure measure in accordance with point (j) of Article 429a(1) of the CRR)	-
12	Other adjustments	508.1
13	Total exposure measure	15,387.5

7.2. UK LR2 - LRCOM: LEVERAGE RATIO COMMON DISCLOSURE

		Leverage ratio exposures	
		a	b
		30 Sept 22	30 Sept 21
		£m	£m
On-balance sheet exposures (excluding derivatives and SFTs)			
1	On-balance sheet items (excluding derivatives, SFTs, but including collateral) ²	16,534.2	15,095.8
2	Gross-up for derivatives collateral provided, where deducted from the balance sheet assets pursuant to the applicable accounting framework	-	-
3	(Deductions of receivables assets for cash variation margin provided in derivatives transactions)	-	-
4	(Adjustment for securities received under securities financing transactions that are recognised as an asset)	-	-
5	(General credit risk adjustments to on-balance sheet items)	-	-
6	(Asset amounts deducted in determining tier 1 capital (leverage))	(151.5)	(139.4)
7	Total on-balance sheet exposures (excluding derivatives and SFTs)	16,382.7	14,956.4
Derivative exposures			
8	Replacement cost associated with SA-CCR derivatives transactions (i.e. net of eligible cash variation margin)	384.5	44.2
UK 8a	Derogation for derivatives: replacement costs contribution under the simplified standardised approach	-	-
9	Add-on amounts for potential future exposure associated with SA-CCR derivatives transactions	50.2	36.3
UK 9a	Derogation for derivatives: potential future exposure contribution under the simplified standardised approach	-	-
UK 9b	Exposure determined under the original exposure method	-	-
10	(Exempted CCP leg of client-cleared trade exposures) (SA-CCR)	-	-
UK 10a	(Exempted CCP leg of client-cleared trade exposures) (simplified standardised approach)	-	-
UK 10b	(Exempted CCP leg of client-cleared trade exposures) (original exposure method)	-	-
11	Adjusted effective notional amount of written credit derivatives	-	-
12	(Adjusted effective notional offsets and add-on deductions for written credit derivatives)	-	-
13	Total derivatives exposures	434.7	80.5
Securities financing transaction ('SFT') exposures			
14	Gross SFT assets (with no recognition of netting), after adjustment for sales accounting transactions	-	-
15	(Netted amounts of cash payables and cash receivables of gross SFT assets)	-	-
16	Counterparty credit risk exposure for SFT assets	-	-
UK 16a	Derogation for SFTs: counterparty credit risk exposure in accordance with Articles 429e(5) and 222 of the CRR	-	-
17	Agent transaction exposures	-	-
UK 17a	(Exempted CCP leg of client-cleared SFT exposures)	-	-
18	Total securities financing transaction exposures	-	-
Other off-balance sheet exposures			
19	Off-balance sheet exposures at gross notional amount	1,307.9	1,380.3
20	(Adjustments for conversion to credit equivalent amounts)	(1,094.1)	(1,128.3)
21	(General provisions deducted in determining tier 1 capital (leverage) and specific provisions associated with off-balance sheet exposures)	-	-
22	Off-balance sheet exposures	213.8	252.0

Excluded exposures			
UK 22a	(Exposures excluded from the total exposure measure in accordance with point (c) of Article 429a(1) of the CRR)	-	-
UK 22b	(Exposures exempted in accordance with point (j) of Article 429a(1) of the CRR (on- and off- balance sheet))	-	-
UK 22g	(Excluded excess collateral deposited at triparty agents)	-	-
UK 22k	(Total exempted exposures)	-	-
Capital and total exposure measure			
23	Tier 1 capital (leverage)	1,221.8	1,055.8
24	Total exposure measure including claims on central banks	17,031.2	15,288.9
UK 24a	(-) Claims on central banks excluded	(1,643.7)	(1,165.7)
UK 24b	Total exposure measure excluding claims on central banks	15,287.5	14,123.2
Leverage ratio			
25	Leverage ratio excluding claims on central banks (%)	7.9%	7.5%
UK 25a	Fully loaded ECL accounting model leverage ratio excluding claims on central banks (%)	7.8%	7.3%
UK 25b	Leverage ratio excluding central bank reserves as if the temporary treatment of unrealised gains and losses measured at fair value through other comprehensive income had not been applied (%)	7.9%	7.5%
UK 25c	Leverage ratio including claims on central banks (%)	7.2%	6.9%
26	Regulatory minimum leverage ratio requirement (%)	N/A¹	N/A¹
Additional leverage ratio disclosure requirements - leverage ratio buffers			
27	Leverage ratio buffer (%)	N/A ¹	N/A ¹
UK 27a	Of which: G-SII or O-SII additional leverage ratio buffer (%)	N/A ¹	N/A ¹
UK 27b	Of which: countercyclical leverage ratio buffer (%)	N/A ¹	N/A ¹
Additional leverage ratio disclosure requirements - disclosure of mean values			
28	Mean of daily values of gross SFT assets, after adjustment for sale accounting transactions and netted of amounts of associated cash payables and cash receivable	N/A ¹	N/A ¹
29	Quarter-end value of gross SFT assets, after adjustment for sale accounting transactions and netted off amounts of associated cash payables and cash receivables	N/A ¹	N/A ¹
UK 31	Average total exposure measure including claims on central banks	N/A ¹	N/A ¹
UK 32	Average total exposure measure excluding claims on central banks	N/A ¹	N/A ¹
UK 33	Average leverage ratio including claims on central banks	N/A ¹	N/A ¹
UK 34	Average leverage ratio excluding claims on central banks	N/A ¹	N/A ¹

¹Annex XII 4a in the Disclosure (CRR) Part, requires only LREQ firms to disclose the lines marked UK LR2 26 and UK LR2 27 to 34. The Group is not large enough to qualify as an LREQ firm.

²On-balance sheet items (excluding derivatives, SFTs, but including collateral) is calculated by taking the total balance sheet assets (£16,653.6m) adjusting for fair value adjustments on loans to customers and retail deposits (£559.9m and £99.7m) and deducting Derivative assets (£779.0m).

7.3. UK LR3 - LRSPL: SPLIT-UP OF ON BALANCE SHEET EXPOSURES (EXCLUDING DERIVATIVES, SFTS AND EXEMPTED EXPOSURES)

		a
		Leverage ratio exposure
		£m
UK-1	Total on-balance sheet exposures (excluding derivatives, SFTs, and exempted exposures), of which:	16,382.7
UK-2	Trading book exposures	-
UK-3	Banking book exposures, of which:	16,382.7
UK-4	Covered bonds	-
UK-5	Exposures treated as sovereigns	1,643.6
UK-6	Exposures to regional governments, MDB, international organisations and PSE not treated as sovereigns	28.4
UK-7	Institutions	318.4
UK-8	Secured by mortgages of immovable properties	12,217.0
UK-9	Retail exposures	786.0
UK-10	Corporates	1,059.1
UK-11	Exposures in default	119.8
UK-12	Other exposures (e.g. equity, securitisations, and other non-credit obligation assets)	210.4

7.4. UK LRA: DISCLOSURE OF LR QUALITATIVE INFORMATION

(a) processes used to manage the risk of excessive leverage

Risk of excessive leverage is the risk that arises through maintaining an inappropriate leverage ratio or mismatches between assets and obligations. This risk is not considered significant for the reasons considered below.

The PRA has proposed a minimum UK leverage ratio of 3.25% for UK firms, with retail deposits of over £50.0 billion. In addition, in October 2021 the PRA stated its expectation that all other UK firms should manage their leverage risk so that this ratio does not ordinarily fall below 3.25%.

The current structure of the balance sheet returns a high leverage ratio. The Group's leverage ratio has remained well in excess of the minimum 3% set out in the CRR since the Bank's authorisation. This positive position will be maintained during the period covered by the business planning process, which will take account of stress testing impacts on the ratio.

(b) factors that had an impact on the leverage ratio during the period

The Group's trading performance, including the unwinding of Covid-related impairment provisions increased CET1. At the same time, loan asset growth was slowed by the impact of the pandemic. Both of these elements had a positive (upward) impact on the leverage ratio on the UK basis. On the Basel basis, excluding central bank reserves, this was partially offset by the impact of increased deposits held at the Bank of England, also in response to the pandemic.

8. Liquidity requirements

This section sets out

- Liquidity risk management
- Liquidity Coverage Ratio ('LCR')
- Net Stable Funding Ratio ('NSFR')

Liquidity represents the scope which a firm has to manage its cash flows, both on a short and longer term basis in the event of outside pressures. The two commonly used principal measures of liquidity are the Liquidity Coverage Ratio ('LCR') which measures short term resilience and the Net Stable Funding Ratio ('NSFR'), which is a longer-term measure with a one-year horizon, supporting the management of balance sheet maturities. Both are calculated on a common basis across the banking sector.

Liquidity is regulated at the level of Paragon Bank PLC, rather than at group level and liquidity measures for the Bank are presented below.

8.1. UK LIQA – LIQUIDITY RISK MANAGEMENT

(a) **Strategies and processes in the management of the liquidity risk, including policies on diversification in the sources and tenor of planned funding**

The Group manages its liquidity in line with the Board's risk appetite and the requirements of the PRA, which are formally documented in the Board's approved ILAAP, updated annually. The Bank maintains a liquidity framework that includes a short to medium term cash flow requirement analysis, a longer-term funding plan and access to the Bank of England's liquidity insurance facilities. Internally, comprehensive treasury policies and risk limits are in place to ensure sufficient liquid assets are maintained, any potential of funding concentrations are managed and that all financial obligations can be met as they fall due, even under stressed conditions.

(b) **Structure and organisation of the liquidity risk management function**

The management of the Group's liquidity is delegated by the Board to the Asset and Liability Committee ('ALCO') and implemented by the Group's Treasury function.

The Board, through the delegated authority provided to ALCO, sets limits as to the level, composition and maturity of liquidity resources. The Group employs a 'three lines of defence model' to delineate responsibilities in the management of risk ensuring adequate segregation in the oversight and assurance of risk, including liquidity risk.

(c) **A description of the degree of centralisation of liquidity management and interaction between the Group's units**

The Group has a dedicated centralised treasury function which is responsible for the day-to-day management of its overall liquidity and wholesale funding arrangements across the business.

(d) **Scope and nature of liquidity risk reporting and measurement systems**

The Treasury function manages the liquidity position of the Group, including producing, maintaining and revising processes, policies and systems to ensure it is able to identify and react to existing and changing liquidity risks and the current and changing economic and business environment. This includes daily, weekly and monthly monitoring, for both regulatory and management requirements via the Treasury Management System.

Treasury operations are managed within an appropriately segregated structure with Risk oversight.

(e) Policies for hedging and mitigating the liquidity risk and strategies and processes

The Group maintains a buffer of High-Quality Liquid Assets ('HQLA') and non-HQLA resources that is sufficient to withstand a severe, sustained outflow of funds as defined by a combined idiosyncratic and market-wide stress.

Internal risk limits for liquidity resources (in both magnitude and mix) are detailed in internal policies and are approved by the RCC on an annual basis.

(f) An outline of contingency funding plans

The Liquidity Contingency Plan is fully integrated into the Recovery Plan ('RP') which is in turn integrated into the wider governance and risk management framework. The RP sets out indicators and trigger points that are used to identify early signs of a liquidity or funding stress and the subsequent escalation process. The RP is approved by the Board on an annual basis and also includes a number of credible and viable recovery options which the Group could use to maintain and restore liquidity resources.

(g) An explanation of how stress testing is used

Stress testing is a forward-looking risk management tool used to quantify, evaluate and understand the potential impact of specified changes to liquidity risk factors on the financial strength and operational resilience of the Group, including its capital and liquidity positions. Stress testing exercises are conducted at least annually to support the ILAAP. In addition, stress tests are performed as part of the corporate planning process, the assessment of going concern in support of statutory reporting requirements and, on an ad hoc basis, as required to support targeted reviews based on emerging or potential risks.

Liquidity stress testing is used to demonstrate overall liquidity adequacy by considering the impact of a range of severe but plausible stress scenarios on cash flows, liquidity resources, profitability, solvency, asset encumbrance and the funding profile over the survival horizon.

The Group uses stress testing to measure the group-specific liquidity risks, and central to this is the management defined stress scenario used for the Overall Liquidity Adequacy Rule ('OLAR').

(h) A declaration approved by the management body on the adequacy of liquidity risk management arrangements

The ILAAP is approved by the Board on an annual basis and is a key document in demonstrating that the Group has adequate liquidity resources and a prudent funding profile that enables it to meet the threshold condition – business to be conducted in a prudent manner.

This statement summarises the risk appetite statement and risk strategy statement which are approved by the Board annually.

(i) A concise liquidity risk statement approved by the management body

The Group's management of liquidity and funding risk aims to ensure the Group has sufficient financial resources and a prudent funding profile to enable it to meet its obligations as they fall due, ensuring a sufficient buffer is maintained at all times.

8.2. UK LIQ1 – QUANTITATIVE INFORMATION OF LCR

The LIQ1 data in the table below is calculated for Paragon Bank PLC on a rolling 12-month average basis.

		a	b	c	d	e	f	g	h
£m		Total unweighted value (average)				Total weighted value (average)			
UK 1a	Quarter ending on (DD Month YYY)	30 Sept 22	30 June 22	31 Mar 22	31 Dec 21	30 Sept 22	30 June 22	31 Mar 22	31 Dec 21
UK 1b	Number of data points used in the calculation of averages	12	12	12	12	12	12	12	12
HIGH-QUALITY LIQUID ASSETS									
1	Total high-quality liquid assets (HQLA)					1,296.7	1,214.0	1,254.3	1,302.6
CASH - OUTFLOWS									
2	Retail deposits and deposits from small business customers, of which:	9,951.6	9,644.3	9,403.7	8,018.2	822.0	791.9	746.2	721.3
3	<i>Stable deposits</i>	<i>824.7</i>	<i>795.7</i>	<i>780.5</i>	<i>577.2</i>	<i>41.2</i>	<i>39.8</i>	<i>39.0</i>	<i>28.9</i>
4	<i>Less stable deposits</i>	<i>4,943.5</i>	<i>4,741.6</i>	<i>4,472.0</i>	<i>4,330.1</i>	<i>780.8</i>	<i>752.1</i>	<i>707.2</i>	<i>692.4</i>
5	Unsecured wholesale funding	-	-	-	-	-	-	-	-
6	Operational deposits (all counterparties) and deposits in networks of cooperative banks	-	-	-	-	-	-	-	-
7	Non-operational deposits (all counterparties)	-	-	-	-	-	-	-	-
8	Unsecured debt	-	-	-	-	-	-	-	-
9	Secured wholesale funding					-	-	-	-
10	Additional requirements	-	-	-	-	-	-	-	-
11	Outflows related to derivative exposures and other collateral requirements	49.3	35.2	40.6	40.7	49.3	35.2	40.6	40.7
12	Outflows related to loss of funding on debt products	-	-	-	-	-	-	-	-
13	Credit and liquidity facilities	2.7	2.5	2.3	3.0	2.7	2.5	2.3	3.0
14	Other contractual funding obligations	1,340.1	1,335.2	1,350.2	1,334.8	270.5	264.3	311.7	370.5
15	Other contingent funding obligations	26.5	28.4	32.3	32.5	8.2	10.7	14.2	15.3
16	TOTAL CASH OUTFLOWS					1,152.8	1,104.5	1,115.1	1,150.8
CASH - INFLOWS									
17	Secured lending (e.g. reverse repos)	-	-	4.1	6.5	-	-	4.1	6.5
18	Inflows from fully performing exposures	90.5	109.7	129.1	155.1	47.7	62.6	78.6	101.0
19	Other cash inflows	227.5	214.5	198.8	185.9	217.7	205.8	190.4	177.5

UK-19a	(Difference between total weighted inflows and total weighted outflows arising from transactions in third countries where there are transfer restrictions or which are denominated in non-convertible currencies)					-	-	-	-
UK-19b	Excess inflows from a related specialised credit institution					-	-	-	-
20	TOTAL CASH INFLOWS	318.0	324.2	332.0	347.5	265.4	268.3	273.0	284.9
UK-20a	<i>Fully exempt inflows</i>	-	-	-	-	-	-	-	-
UK-20b	<i>Inflows subject to 90% cap</i>	-	-	-	-	-	-	-	-
UK-20c	<i>Inflows subject to 75% cap</i>	318.0	324.2	332.0	347.5	265.4	268.3	273.0	284.9
TOTAL ADJUSTED VALUE									
UK-21	LIQUIDITY BUFFER					1,296.7	1,214.0	1,254.3	1,302.6
22	TOTAL NET CASH OUTFLOWS					887.4	836.2	842.1	865.9
23	LIQUIDITY COVERAGE RATIO					146.2%	145.7%	151.2%	153.2%

8.3. UK LIQB - QUALITATIVE INFORMATION ON LCR, WHICH COMPLEMENTS TEMPLATE UK LIQ1

(a) Main drivers of LCR results

The LCR is driven by a combination of the size of High-Quality Liquid Assets ('HQLA'), modelled stressed retail net outflows, wholesale funding requirements from upcoming maturities and collateral outflows that could arise in a stress. As the Group is predominantly retail funded, retail deposit outflows continue to be the largest contributor to net outflows in the LCR.

(b) Explanations on the changes in the LCR over time

The Group maintained its LCR in excess of regulatory and internal limits. The 12-month average LCR of 146% remained broadly consistent throughout the past 12 months.

(c) Explanations on the actual concentration of funding sources

The Group's primary source of funding is retail deposits supplemented with secured wholesale funding, including central bank funding. Secured funding acts as a more resilient source of financing than unsecured wholesale funding in stressed conditions when investors demand greater security. However, excessive asset encumbrance could undermine some of the Group's recovery and resolution options therefore there are limits on the amount of assets which can be encumbered in a business as usual environment.

(d) High-level description of the composition of the institution's liquidity buffer

The HQLA are all held in the form of cash in the Bank's Bank of England Reserves Account, which is under the day-to-day control of the Treasury function. The Bank does not currently hold any other form of liquid assets.

(e) Derivative exposures and potential collateral calls

The Group uses derivative financial instruments such as interest rate swaps for risk management purposes only. The Group does not operate a trading book, nor make prices in the market. The LCR net cash outflows related to derivative transactions primarily reflect the risk of potential additional collateral outflows due to adverse market rate changes.

(f) **Currency mismatch in the LCR**

The Group's retail funding and lending businesses are denominated in UK pounds sterling. Therefore, the Group's currency mismatch risk for LCR purposes is currently immaterial.

(g) **Other items in the LCR calculation that are not captured in the LCR disclosure template**

There are no other relevant items.

8.4. UK LIQ2 – NET STABLE FUNDING RATIO ('NSFR')

£m		a	b	c	d	e
		Unweighted value by residual maturity				Weighted value
		No maturity	< 6 months	6 months to < 1yr	≥ 1yr	
Available stable funding (ASF) Items						
1	Capital items and instruments	1,364.1	-	-	-	1,364.1
2	<i>Own funds</i>	1,214.1	-	-	-	1,364.1
3	<i>Other capital instruments</i>		-	-	-	-
4	Retail deposits		6,267.6	1,996.4	1,994.6	9,473.8
5	<i>Stable deposits</i>		822.2	9.6	1.8	792.0
6	<i>Less stable deposits</i>		5,445.4	1,986.8	1,992.8	8,681.7
7	Wholesale funding:		66.7	-	3,647.6	3,676.0
8	<i>Operational deposits</i>		-	-	-	-
9	<i>Other wholesale funding</i>		66.7	-	3,647.6	3,676.0
10	Interdependent liabilities		-	-	-	-
11	Other liabilities:		723.0	406.2	1,879.2	2,082.3
12	<i>NSFR derivative liabilities</i>	-				
13	<i>All other liabilities and capital instruments not included in the above categories</i>		723.0	406.2	1,879.2	2,082.3
14	Total available stable funding (ASF)					16,596.2
Required stable funding ('RSF') Items						
15	Total high-quality liquid assets ('HQLA')					-
UK-15a	Assets encumbered for more than 12m in cover pool		-	-	-	-
16	Deposits held at other financial institutions for operational purposes		-	-	-	-
17	Performing loans and securities:		600.6	485.1	15,156.0	13,069.1
18	<i>Performing securities financing transactions with financial customers collateralised by Level 1 HQLA subject to 0% haircut</i>		-	-	-	-
19	<i>Performing securities financing transactions with financial customer collateralised by other assets and loans and advances to financial institutions</i>		212.9	17.2	191.9	221.8
20	<i>Performing loans to non-financial corporate clients, loans to retail and small business customers, and loans to sovereigns, and PSEs, of which:</i>		377.5	333.6	12,928.7	11,007.6
21	<i>With a risk weight of less than or equal to 35% under the Basel II Standardised Approach for credit risk</i>		108.3	62.9	11,776.1	9,748.2
22	<i>Performing residential mortgages, of which:</i>		10.3	0.3	141.1	97.0
23	<i>With a risk weight of less than or equal to 35% under the Basel II Standardised Approach for credit risk</i>		0.0	0.3	141.1	91.8

24	<i>Other loans and securities that are not in default and do not qualify as HQLA, including exchange-traded equities and trade finance on-balance sheet products</i>		-	134.0	1,894.3	1,742.7
25	Interdependent assets		-	-	-	-
26	Other assets:	-	83.1	3.9	492.1	523.1
27	<i>Physical traded commodities</i>				-	-
28	<i>Assets posted as initial margin for derivative contracts and contributions to default funds of CCPs</i>				59.0	50.2
29	<i>NSFR derivative assets</i>				118.7	118.7
30	<i>NSFR derivative liabilities before deduction of variation margin posted</i>				12.4	0.6
31	<i>All other assets not included in the above categories</i>		83.1	3.9	301.9	353.6
32	Off-balance sheet items		1,356.1	-	-	67.8
33	Total RSF					13,660.0
34	Net Stable Funding Ratio (%)					121.5%

9. Exposures to credit risk and credit quality

This section sets out

- Risk management objectives and policies for credit risk
- Credit quality of assets
- Performing and non-performing exposures and related provisions
- Maturity of exposures
- Changes in stock of non-performing loans and advances and related net accumulated recoveries
- Credit quality of forborne exposures
- Collateral

This section provides information on the amounts and nature of the Group's credit risk exposures, which principally arrive from its lending activities, but also include institutional exposures (to other banks and the Bank of England) relating to cash balances.

Assets below are classified according to regulatory categories, which differ from those which the Group uses to describe these balances in other external reporting.

9.1. UK CRA: GENERAL QUALITATIVE INFORMATION ABOUT CREDIT RISK

(a) Risk statement in accordance with how the business model translates into the components of the Group's credit risk profile ((f) of Article 435(1) CRR)

Credit risk is a fundamental risk that is inherent to the business model of the Group. The credit risk strategy is based on the management of that risk to support maximum value generation. The Group's credit risk strategy is to ensure that business growth is actively encouraged to achieve profit expansion, focussing on sectors where credit risk can be managed to a stable, low cost level. Growth is maximised within credit criteria that are consistent with minimal earnings' volatility. In order to achieve these aims, the Group focuses on business streams where it has specific expertise in order to control and mitigate its exposure to credit risk.

The Group Credit Risk Principal Risk Policy provides a structured and disciplined approach to the management of risk within agreed board risk appetites. The framework:

- Establishes standards for the consistent identification, measurement, monitoring, management and reporting of credit risk exposure and loss experience
- Outlines the approach that will be taken in respect of setting and defining risk appetite and risk tolerances
- Promotes effective credit risk management across the Group, thereby supporting the delivery of credit performance within risk appetite

Risk appetite is described at a granular level, with policies aligning to that risk appetite. Risk appetite is expressed both qualitatively and quantitatively, with stated tolerances within which the business must operate.

(b) Strategies and processes to manage credit risk and the policies for hedging and mitigating that risk in accordance with the criteria and approach used for defining the credit risk management policy and for setting credit risk limits ((a) and (d) of Article 435(1) CRR)

The Group controls and mitigates credit risk by focussing on business streams where it has specific expertise. The Group has a robust limit framework supported by comprehensive policies that set out detailed criteria which must be met before loans are approved. A suite of scorecards and statistical models are utilised to measure and grade credit risk at both origination and throughout the customer life-cycle.

Originated loan assets are subject to individual underwriting approval with robust control and support provided in most areas by well-established decision tools. Complementing these controls is an established quality assurance framework ensuring that underwriting standards are maintained.

Credit risks are managed effectively within the appetite set by the Board through:

- The evaluation of the credit risk exhibited by potential borrowers using a combination of lending policy criteria, credit assessment, policy rules and underwriting. Whilst the specific factors considered vary depending on the product line, these include borrower affordability, credit history and loan-to-value. In addition, confirmation of borrower identity is obtained. When considering applications, the primary focus is always placed on the individual or business's willingness and ability to repay
- The taking of security against the loan. For example, all mortgages are secured by way of a first legal charge against the property
- On-going monitoring of account performance. Loans which show signs of adverse performance are typically managed by specialist areas which manage collections and recovery processes.

In terms of supporting collateral, the majority of the Group's loans by value continue to be secured against residential property in England and Wales at conservative loan to value levels.

Collections and arrears management processes are in place which are consistent with the Group's principle of treating customers in vulnerable circumstances fairly and supportively. These processes benefit from specialist staff.

The Group uses a range of sources to inform expectations of key external factors such as interest rate movements and house price inflation which are in turn used to guide policy and underwriting.

The Group sets maximum limits applied to risk concentrations, for example, geographical spread and maximum exposure to individual customers. These limits are numerous and are tracked on a monthly basis by the Group's Credit Risk function and reported monthly through the Credit Committee on to the RCC. Potential areas of concentration relating not just to loan products but also covering borrower, asset, region, or large exposure risk for example, are therefore managed within defined limits.

The Group's largest portfolio concentration is that of buy-to-let mortgages. The Group has a very deep understanding of the private rented sector built up over many years of successful operations in the buy-to-let market. This includes a long history of performance data through the economic cycle together with regular independently conducted research commissioned over many years.

All buy-to-let mortgages and development finance loans are secured by way of a first legal charge on UK residential property, and in the case of the latter, additional charges and guaranties related to the build are generally also required.

The primary collateral therefore benefits from the features of UK property which forms part of a highly mature, liquid, sustainable market demonstrated over many decades of operation.

The Group conducts valuations of properties given as security at the inception of loans and updates the valuations from time to time as part of its account management and arrears processes, typically conducting drive-by or full valuations as accounts move through arrears stages. All buy-to-let mortgage and development finance origination valuations are provided by Royal Institution of Chartered Surveyors ('RICS') qualified surveyors who undertake their assessment via an on-site, physical inspection of each property.

Wholesale counterparty risk

Exposure to wholesale counterparty credit risk is limited to counterparties that meet specific credit rating criteria per the Group's comprehensive treasury policies.

Exposure to approved counterparties is monitored daily by senior management within the Group's treasury function with all exposure managed within approved limits. The credit rating of all treasury counterparties and the Group's exposure to them is reported monthly to ALCO.

Treasury counterparties are typically highly rated banks. All cash deposits and derivative positions held within the Group's securitisation structures must comply with criteria set out in the financing arrangements.

(c) The structure and organisation of the credit risk management and control function ((b) of Article 435(1) CRR)

A clear risk governance structure, as detailed in the ERMF, is in place to facilitate the oversight of credit risk and the broader requirements which underpin the identification, assessment, and management of risks across the Group.

The Board is the key governance body and is responsible for the Group's strategy, performance and for ensuring appropriate and effective risk management. The Board delegates the responsibility of risk management oversight across the Group to the RCC.

The Board has delegated responsibility for the day-to-day running of the business to the CEO. The CEO is supported in performing these day-to-day activities through designated executive sub-committees, one of which, the ERC, is responsible for adherence to board and executive risk appetites, risk appetite statements, risk triggers and thresholds, risk profile and risk strategy.

Established under the authority of the ERC is the Credit Committee. The Credit Committee is the primary management committee responsible for the management of credit risk and credit risk related issues. The Credit Committee is authorised by the ERC to oversee the management of credit risk within the Board's risk appetite. The committee is responsible for oversight and advice to the ERC covering areas of credit policy, analytics, credit risk monitoring, credit risk quality, and risk oversight throughout the customer life cycle.

(d) The relationships between credit risk management, risk control, compliance and internal audit functions ((b) of Article 435(1) CRR)

The 'Three Lines of Defence' model (Detailed in Section 3.1, template UK OVA (b)) has been adopted as the overarching approach to risk management within the Group. The model ensures appropriate responsibility is allocated for the management, reporting and escalation of risk. Allocation of clear responsibilities for credit risk management ensures risks are identified, monitored, managed, and mitigated where required in order that they remain within the Board's risk appetite.

First line business divisions are responsible for the initial assessment and management of credit risk. These responsibilities include measuring and managing the business in accordance with credit risk appetite as well as identifying and reviewing all material and emerging credit risks. The first lines operate within delegated mandate authorities and are responsible for reporting any breach of credit policy.

The second line Credit Risk function provides oversight and challenge to the first line's management of credit risk. The team provides day-to-day control and oversight of the risks associated with lending via a combination of standard risk management principles and modelling technology. This includes assessment of new business quality, monitoring lending performance and developing and maintaining application processing decision systems. The team also monitors the lending control structures to ensure compliance with the Group's Credit Policies.

Internal audit acts as the third line of defence. It independently challenges the overall management of credit risk including assessing the adequacy and effectiveness of the Group Credit Risk Policy and key credit risk controls. It is responsible for assurance in respect of control monitoring and testing whilst also independently assessing all aspects of the rating systems, including model components (such as Probability of Default ('PD'), loss given default ('LGD') and exposure at default ('EAD'), data integrity, model lifecycle processes and credit approval processes.

Internal and external audit provide assurance to the Audit Committee and senior management on the adequacy of both the first and second lines.

9.2. UK CRB: ADDITIONAL DISCLOSURE RELATED TO THE CREDIT QUALITY OF ASSETS

(a) The scope and definitions of 'past-due' and 'impaired' exposures used for accounting purposes and the differences, if any, between the definitions of past due and default for accounting and regulatory purposes (in accordance with Article 178 CRR)

IFRS 9 defines a credit impaired account as one where an account has suffered one or more events which have had a detrimental effect on future cash flows. It is thus a backward-looking definition, rather than one based on future expectations.

Credit impaired assets are identified either through quantitative measures or by operational status. Designations of accounts for regulatory capital purposes are also taken into account. Assets may also be assigned to Stage 3 if they are identified as credit impaired as a result of management review processes.

All loans which are in the process of enforcement, from the point where this becomes the administration strategy, are classified as credit impaired.

Loans are retained in Stage 3 for three months after the point where they cease to exhibit the characteristics of default. After this point, they may move to Stage 2 or Stage 1 depending on whether a trigger indicating a Significant Increase in Credit Risk ('SICR') remains.

All default cases are considered to be credit impaired, including all receiver of rent cases and all cases with at least one payment more than 90 days overdue, even where such cases are being managed in the expectation of realising all of the carrying balance.

(b) The extent of past-due exposures (more than 90 days) that are not considered to be impaired and the reasons for this

All assets more than 90 days past due are treated as impaired, even where cases are being managed in the expectation of realising all of the carrying value.

(c) Description of methods used for determining general and specific credit risk adjustments

Specific credit risk adjustments represent loan-by-loan impairments determined using an expected credit loss basis in accordance with IFRS 9. All loans are considered for provision, and an impairment amount calculated based on each account's probability of default. The expected credit loss represents the probability weighted exposure at default reduced by the value of any security.

The Group does not have any general credit risk adjustments; therefore all provisions are considered specific credit risk adjustments.

(d) Definition of a restructured exposure (point (d) of Article 178(3) CRR)

The Group does not at present have a formalised definition of a restructured exposure and a definition will be formalised as part of the IRB application process.

9.3. UK CR1: PERFORMING AND NON-PERFORMING EXPOSURES AND RELATED PROVISIONS

The asset classes used in template CR1 below are regulatory classes prescribed in the template by the PRA and therefore will not reconcile to the accounting disclosures.

		a	b	c	d	e	f	g	h	i	j	k	l	m	n	o
		Gross carrying amount/nominal amount						Accumulated impairment, accumulated negative changes in fair value due to credit risk and provisions						Accumulated partial write-off	Collateral and financial guarantees received ²	
£m		Performing exposures			Non-performing exposures ¹			Performing exposures – accumulated impairment and provisions			Non-performing exposures – accumulated impairment, accumulated negative changes in fair value due to credit risk and provisions				On performing exposures	On non-performing exposures
			Of which stage 1	Of which stage 2		Of which stage 2	Of which stage 3		Of which stage 1	Of which stage 2		Of which stage 2	Of which stage 3			
005	Cash balances at central banks and other demand deposits	1,930.9	1,930.9	-	-	-	-	-	-	-	-	-	-	-	-	-
010	Loans and advances	14,120.6	12,159.8	1,960.8	153.2	-	153.2	33.5	25.5	8.0	30.0	-	30.0	-	12,343.6	99.3
020	Central banks	-	-	-	-	-	-	-	-	-	-	-	-	-	-	-
030	General governments	-	-	-	-	-	-	-	-	-	-	-	-	-	-	-
040	Credit institutions	-	-	-	-	-	-	-	-	-	-	-	-	-	-	-
050	Other financial corporations	179.4	179.4	-	-	-	-	0.7	0.7	-	-	-	-	-	-	-
060	Non-financial corporations	7,244.1	6,362.4	881.7	43.8	-	43.8	25.2	21.4	3.8	15.8	-	15.8	-	5,734.3	20.4
070	Of which SMEs	5,792.0	4,954.3	837.7	33.2	-	33.2	7.0	3.7	3.3	13.0	-	13.0	-	5,734.3	20.4
080	Households	6,697.1	5,618.0	1,079.1	109.4	-	109.4	7.6	3.4	4.2	14.2	-	14.2	-	6,609.3	78.9
090	Debt securities	-	-	-	-	-	-	-	-	-	-	-	-	-	-	-
100	Central banks	-	-	-	-	-	-	-	-	-	-	-	-	-	-	-
110	General governments	-	-	-	-	-	-	-	-	-	-	-	-	-	-	-

120	Credit institutions	-	-	-	-	-	-	-	-	-	-	-	-	-	-	-
130	Other financial corporations	-	-	-	-	-	-	-	-	-	-	-	-	-	-	-
140	Non-financial corporations	-	-	-	-	-	-	-	-	-	-	-	-	-	-	-
150	Off-balance-sheet exposures	1,307.9	1,307.9	-	-	-	-	-	-	-	-	-	-	-	-	-
160	Central banks	-	-	-	-	-	-	-	-	-	-	-	-	-	-	-
170	General governments	-	-	-	-	-	-	-	-	-	-	-	-	-	-	-
180	Credit institutions	-	-	-	-	-	-	-	-	-	-	-	-	-	-	-
190	Other financial corporations	34.1	34.1	-	-	-	-	-	-	-	-	-	-	-	-	-
200	Non-financial corporations	-	-	-	-	-	-	-	-	-	-	-	-	-	-	-
210	Households	1,273.8	1,273.8	-	-	-	-	-	-	-	-	-	-	-	-	-
220	Total	17,359.4	15,398.6	1,960.8	153.2	-	153.2	33.5	25.5	8.0	30.0	-	30.0	-	12,343.6	99.3

Notes:

¹Non-performing exposures are those accounts classified as stage 3, principally those over 90 days in arrears and those in receiver of rent.

²Collateral has been disclosed as the maximum amount of the collateral or guarantee that can be considered, being the lower of security value or balance, primarily disclosed for mortgages and motor accounts.

9.4. UK CR1-A: MATURITY OF EXPOSURES

		a	b	c	d	e	f
		Net exposure value ¹					
£m		On demand	<= 1 year	> 1 year <= 5 years	> 5 years	No stated maturity	Total
1	Loans and advances	-	696.5	2,399.9	11,113.9	-	14,210.3
2	Debt securities	-	-	-	-	-	-
3	Total	-	696.5	2,399.9	11,113.9	-	14,210.3

Note:

¹For regulatory reporting purposes, maturity of exposures is reported at Bank level only and therefore template UK CR1-A has been reported for the bank and will not reconcile to the Group Accounts.

9.5. UK CR2: CHANGES IN THE STOCK OF NON-PERFORMING LOANS AND ADVANCES

		a
		Gross carrying amount
		£m
010	Initial stock of non-performing loans and advances	288.6
020	Inflows to non-performing portfolios	46.1
030	Outflows from non-performing portfolios	(15.6)
040	Outflows due to write-offs	(16.5)
050	Outflow due to other situations ¹	(149.4)
060	Final stock of non-performing loans and advances	153.2

Note:

¹Outflows due to other situations includes repayments of £88.7m and loan sales of £75.3m.

9.6. UK CR2A: CHANGES IN THE STOCK OF NON-PERFORMING LOANS AND ADVANCES AND RELATED NET ACCUMULATED RECOVERIES

Template CR2a is applicable to large institutions only. As the Group does not qualify as large, this template has not been presented.

9.7. UK CQ1: CREDIT QUALITY OF FORBORNE EXPOSURES

The Group does not apply a regulatory definition of forbearance and therefore template CQ1 has not been presented.

9.8. UK CQ2: QUALITY OF FORBEARANCE

Template CQ2 is applicable to large institutions only. As the Group does not qualify as large, this template has not been presented.

9.9. UK CQ3: CREDIT QUALITY OF PERFORMING AND NON-PERFORMING EXPOSURES BY PAST DUE DAYS

		a	b	c	d	e	f	g	h	i	j	k	l
		Gross carrying amount/nominal amount											
		Performing exposures			Non-performing exposures								
£m		Not past due or past due ≤ 30 days	Past due > 30 days ≤ 90 days		Unlikely to pay that are not past due or are past due ≤ 90 days	Past due > 90 days ≤ 180 days	Past due > 180 days ≤ 1 year	Past due > 1 year ≤ 2 years	Past due > 2 years ≤ 5 years	Past due > 5 years ≤ 7 years	Past due > 7 years	Of which defaulted	
005	Cash balances at central banks and other demand deposits	1,930.9	1,930.9	-	-	-	-	-	-	-	-	-	-
010	Loans and advances	14,120.6	14,120.6	28.0	153.2	81.8	13.2	12.6	8.3	8.0	2.3	27.0	153.2
020	Central banks	-	-	-	-	-	-	-	-	-	-	-	-
030	General governments	-	-	-	-	-	-	-	-	-	-	-	-
040	Credit institutions	-	-	-	-	-	-	-	-	-	-	-	-
050	Other financial corporations	179.4	179.4	-	-	-	-	-	-	-	-	-	-
060	Non-financial corporations	7,244.1	7,236.0	8.1	43.8	35.1	3.6	2.6	1.1	0.6	-	0.8	43.8
070	Of which SMEs	5,792.0	5,785.4	6.6	33.2	26.3	2.4	2.5	0.8	0.4	-	0.8	33.2
080	Households	6,697.1	6,677.2	19.9	109.4	46.7	9.6	10.0	7.3	7.3	2.3	26.2	109.4
090	Debt securities	-	-	-	-	-	-	-	-	-	-	-	-
100	Central banks	-	-	-	-	-	-	-	-	-	-	-	-
110	General governments	-	-	-	-	-	-	-	-	-	-	-	-
120	Credit institutions	-	-	-	-	-	-	-	-	-	-	-	-
130	Other financial corporations	-	-	-	-	-	-	-	-	-	-	-	-
140	Non-financial corporations	-	-	-	-	-	-	-	-	-	-	-	-
150	Off-balance-sheet exposures												-
160	Central banks												-
170	General governments												-
180	Credit institutions												-
190	Other financial corporations												-
200	Non-financial corporations												-
210	Households												-
220	Total	16,051.5	16,023.5	28.0	153.2	81.8	13.2	12.6	8.4	7.9	2.3	27.0	153.2

9.10. UK CQ4: QUALITY OF NON-PERFORMING EXPOSURES BY GEOGRAPHY

This template is subject to a 10% threshold (non-domestic exposures divided by total exposures) set out in the Disclosure (CRR) Part. The Group has no non-domestic exposures (exposures outside the UK) and therefore UKCQ4 has not been presented.

9.11. UK CQ5: CREDIT QUALITY OF LOANS AND ADVANCES TO NON-FINANCIAL CORPORATIONS BY INDUSTRY

£m		a	b	c	d	e	f
		Gross carrying amount				Accumulated impairment	Accumulated negative changes in fair value due to credit risk on non-performing exposures
		Of which non-performing		Of which loans and advances subject to impairment			
			Of which defaulted				
010	Agriculture, forestry and fishing	27.8	N/A ¹	0.6	N/A ¹	0.3	-
020	Mining and quarrying	-	N/A ¹	-	N/A ¹	-	-
030	Manufacturing	62.7	N/A ¹	0.7	N/A ¹	0.7	-
040	Electricity, gas, steam and air conditioning supply	-	N/A ¹	-	N/A ¹	-	-
050	Water supply	-	N/A ¹	-	N/A ¹	-	-
060	Construction	974.2	N/A ¹	7.8	N/A ¹	6.0	-
070	Wholesale and retail trade	6.8	N/A ¹	-	N/A ¹	-	-
080	Transport and storage	163.7	N/A ¹	0.7	N/A ¹	0.8	-
090	Accommodation and food service activities	3.9	N/A ¹	-	N/A ¹	-	-
100	Information and communication	18.2	N/A ¹	0.1	N/A ¹	0.2	-
110	Financial and insurance activities	96.2	N/A ¹	0.3	N/A ¹	1.4	-
120	Real estate activities	5,796.5	N/A ¹	32.5	N/A ¹	20.1	-
130	Professional, scientific and technical activities	-	N/A ¹	-	N/A ¹	-	-
140	Administrative and support service activities	65.4	N/A ¹	0.4	N/A ¹	11.0	-
150	Public administration and defence, compulsory social security	19.1	N/A ¹	-	N/A ¹	-	-
160	Education	3.8	N/A ¹	-	N/A ¹	-	-
170	Human health services and social work activities	6.8	N/A ¹	-	N/A ¹	-	-

180	Arts, entertainment and recreation	-	N/A ¹	-	N/A ¹	-	-
190	Other services	42.8	N/A ¹	0.7	N/A ¹	0.4	-
200	Total	7,287.9	N/A¹	43.8	N/A¹	40.9	-

Note:

¹Columns b and d are not applicable under Article 442 as they are only applicable to large institutions. The Group does not meet the size criteria for a large institution.

9.12. UK CQ6: COLLATERAL VALUATION - LOANS AND ADVANCES

This template applies to large institutions only. As the Group does not meet the criteria for a large institution, template UK CQ6 has not been presented.

9.13. UK CQ7: COLLATERAL OBTAINED BY TAKING POSSESSION AND EXECUTION PROCESSES

No collateral taken into possession is recognised on the balance sheet and therefore template UK CQ7 has not been presented.

9.14. UK CQ8: COLLATERAL OBTAINED BY TAKING POSSESSION AND EXECUTION PROCESSES – VINTAGE BREAKDOWN

This template applies to large institutions only. As the Group does not meet the criteria for a large institution, template UK CQ6 has not been presented.

10. Credit risk mitigation

This section sets out

- Credit Risk mitigation ('CRM') techniques

Credit risk mitigation, for regulatory capital purposes, relates to financial arrangements to reduce risk exposure for which a benefit can be received in the calculation of capital requirements.

Economically, the Group's principal sources of mitigation against credit loss, other than the quality of its underwriting and account management processes, is the value of assets securing loan accounts, such as properties securing mortgages and assets financed by finance leases. However, this security is not counted as CRM for the purposes of calculating capital requirements.

10.1. UK CRC – QUALITATIVE DISCLOSURE REQUIREMENTS RELATED TO CRM TECHNIQUES

(a) Core policies and processes for on- and off-balance sheet netting (Article 453 (a) CRR);

The Group does not utilise either on or off-balance sheet netting.

(b) The core features of policies and processes for eligible collateral evaluation (Article 453 (b) CRR);

All collateral allowed for in the Group's capital calculations is in the form of either cash or guarantees from the UK Government, and is provided on the basis of standard contractual arrangements for the financial assets involved. It is used for credit mitigation in the calculation of collateral and financial guarantees received in table UK CR1.

The form of credit risk mitigation employed for treasury transactions is determined by the nature of the instrument. ISDA (International Swaps and Derivatives Association) Master Agreements are completed, with each derivative counterparty, including a Credit Support Annex ('CSA'), allowing for the exchange of collateral to mitigate the credit risk of the derivatives portfolio. This includes exposures to London Clearing House ('LCH'), the central counterparty that the Group has cleared derivatives with since 2019.

Under ISDA Master Agreements the derivatives portfolio is typically valued using discounted cash flow and options pricing models as appropriate. The terms of a CSA allow for collateral to be passed between parties to mitigate the counterparty credit risk inherent in the outstanding positions. The Group's CSAs are two-way agreements where both parties can be required to post collateral dependent on the exposure of the derivative. Collateral in the form of cash is paid or received on a regular basis (typically daily) to mitigate the mark-to-market exposures.

CSAs grant legal rights of set-off for transactions with the same counterparty. Accordingly, the credit risk associated with such positions is reduced to the extent that negative mark-to-market values offset positive mark-to-market values in the calculation of credit risk within each netting agreement.

(c) Main types of collateral taken to mitigate credit risk (Article 453 (c) CRR);

The Group typically posts and receives cash to mitigate credit risk arising from derivatives; however the Group's securitisation documentation allows for other types of collateral, including bonds issued by governments (including those of the UK, USA and EU member states), to be received in place of cash. The Group's first and second mortgage assets, car and asset lease finance accounts, development finance accounts, structured lending facilities and invoice finance accounts are all secured on the value of the assets financed, but these do not qualify as CRM for capital calculations.

(d) Guarantees and credit derivatives used as credit protection (Article 453 (d) CRR);

The Group does not utilise credit derivatives and the only guarantees used as credit protection are those provided by the UK Government relating to loans made under the Coronavirus Business Interruption Loans Scheme ('CBILS'), Bounce-back Loan Scheme ('BBLs') and Recovery Loan Scheme ('RLS').

(e) Information about market or credit risk concentrations within the credit mitigation taken (Article 453 (e) CRR);

No significant concentrations noted.

10.2. UK CR3 – CRM TECHNIQUES OVERVIEW: DISCLOSURE OF THE USE OF CREDIT RISK MITIGATION TECHNIQUES

This table includes all amounts shown as 'Loans and advances' in table UK CR1.

		a	b	c	d	e
		Unsecured carrying amount	Secured carrying amount			
			Of which secured by collateral ¹	Of which secured by financial guarantees		Related net accumulated recoveries
		£m		£m	£m	
1	Loans and advances	1,767.3	12,443.0	12,443.0	-	-
2	Debt securities	-	-	-	-	-
3	Total	1,767.3	12,443.0	12,443.0	-	-
4	<i>Of which non-performing exposures</i>	23.9	99.3	99.3	-	-
5	<i>Of which defaulted</i>	23.9	99.3			

Notes:

¹Collateral has been disclosed as the maximum amount of the collateral or guarantee that can be considered, being the lower of security value or balance, primarily disclosed for mortgages and motor , although such amounts do not qualify as CRM for regulatory purposes.

11. Standardised approach to credit risk

This section sets out

- Qualitative disclosure requirements
- Credit risk exposure and CRM effects
- Exposure by risk weighting

The Group evaluates the RWEAs in respect of credit risk for its assets, excluding derivatives, using the Standardised Approach ('SA') set out in the Rulebook. Permission is being sought to use an Internal Ratings Based ('IRB') approach for some asset classes, but this has not yet been granted.

The tables in this section explain how those RWEAs are derived.

11.1. UK CRD – QUALITATIVE DISCLOSURE REQUIREMENTS RELATED TO STANDARDISED MODEL

(a) Names of the external credit assessment institutions ('ECAI's) and export credit agencies ('ECA's) (Article 444 (a) CRR);

ECAs used by the Group are Fitch, Standard and Poor's and Moody's. There have been no changes to these over the disclosure period.

The Group has not made use of ECAs.

(b) The exposure classes for which each ECAI or ECA is used (Article 444 (b) CRR);

Ratings issued by the ECAs listed above are used to attributed risk weightings to institutional exposures in both the SA for bank deposits and in the SA-CCR for derivative exposures (see section [12] – Exposure to Counter-party Credit Risk). The Group does not use ECAs for other credit risk exposure classes under the standardised approach.

(c) The process used to transfer the issuer and issue credit ratings onto comparable assets items not included in the trading book (Article 444 (c) CRR);

The Group does not operate a trading book.

(d) The association of the external rating of each nominated ECAI or ECA with the risk weights that correspond with the credit quality steps (Article 444 (d) CRR).

The ratings from the ECAs are mapped across to the Credit Quality Step requirements in the UK CRR using PRA rulebook mappings.

11.2. UK CR4 – STANDARDISED APPROACH – CREDIT RISK EXPOSURE AND CRM EFFECTS

		a	b	c	d	e	f
		Exposures before CCF and before CRM		Exposures post CCF ¹ and post CRM		RWAs and RWAs density	
		On-balance-sheet exposures	Off-balance-sheet exposures	On-balance-sheet exposures	Off-balance-sheet amount	RWAs	RWAs density (%) ²
		£m	£m	£m	£m		
1	Central governments or central banks	1,643.6	-	1,643.6	-	-	-
2	Regional government or local authorities	28.4	2.1	28.4	0.4	5.7	19.8
3	Public sector entities	-	-	-	-	-	-
4	Multilateral development banks	-	-	-	-	-	-
5	International organisations	-	-	-	-	-	-
6	Institutions	318.4	-	318.4	-	194.5	61.1
7	Corporates	344.2	48.3	344.2	21.6	339.2	92.7
8	Retail	786.0	104.3	716.3	20.6	466.7	63.3
9	Secured by mortgages on immovable property	12,188.8	450.0	12,188.8	90.0	4,308.7	35.1
10	Exposures in default	121.7	-	121.7	-	122.0	100.2
11	Exposures associated with particularly high risk	719.9	703.2	719.9	13.3	1,099.8	150.0
12	Covered bonds	-	-	-	-	-	-
13	Institutions and corporates with a short-term credit assessment	-	-	-	-	-	-
14	Collective investment undertakings	-	-	-	-	-	-
15	Equity	-	-	-	-	-	-
16	Other items	232.4	-	232.4	-	226.7	97.5
17	TOTAL	16,383.4	1,307.9	16,313.7	145.9	6,763.3	41.1
						See table UK OV1	

Notes:

¹Credit Conversion Factor ('CCF'). This represents the proportion of that part of the off-balance sheet exposures representing lending pipelines which are expected to complete as advances, for capital purposes.

²RWAs density % is calculated as RWA as a percentage of the sum of on-balance-sheet and off-balance-sheet amounts (e / (c+d))

11.3. UK CR5 – STANDARDISED APPROACH

£m		a	b	c	d	e	f	g	h	i	j	k	l	m	n	o	p	q
		Risk weight															Total	Of which unrated ¹
		0%	2%	4%	10%	20%	35%	50%	70%	75%	100%	150%	250%	370%	1250%	Others		
1	Central governments or central banks	1,643.6	-	-	-	-	-	-	-	-	-	-	-	-	-	-	1,643.6	-
2	Regional government or local authorities	-	-	-	-	28.8	-	-	-	-	-	-	-	-	-	-	28.8	-
3	Public sector entities	-	-	-	-	-	-	-	-	-	-	-	-	-	-	-	-	-
4	Multilateral development banks	-	-	-	-	-	-	-	-	-	-	-	-	-	-	-	-	-
5	International organisations	-	-	-	-	-	-	-	-	-	-	-	-	-	-	-	-	-
6	Institutions	-	-	188.2	-	318.4	-	246.5	-	-	-	-	-	-	-	-	753.1	-
7	Corporates	-	-	-	-	-	-	-	-	-	349.9	-	-	-	-	15.9	365.8	365.8
8	Retail exposures	-	-	-	-	-	-	-	-	736.9	-	-	-	-	-	-	736.9	736.9
9	Exposures secured by mortgages on immovable property	-	-	-	-	-	12,257.2	-	-	11.7	9.9	-	-	-	-	-	12,278.8	12,278.8
10	Exposures in default	-	-	-	-	-	-	-	-	-	120.9	0.7	-	-	-	-	121.6	121.6
11	Exposures associated with particularly high risk	-	-	-	-	-	-	-	-	-	-	733.2	-	-	-	-	733.2	733.2
12	Covered bonds	-	-	-	-	-	-	-	-	-	-	-	-	-	-	-	-	-
13	Exposures to institutions and corporates with a short-term credit assessment	-	-	-	-	-	-	-	-	-	-	-	-	-	-	-	-	-
14	Units or shares in collective investment undertakings	-	-	-	-	-	-	-	-	-	-	-	-	-	-	-	-	-
15	Equity exposures	-	-	-	-	-	-	-	-	-	-	-	-	-	-	-	-	-
16	Other items	5.7	-	-	-	-	-	-	-	-	226.7	-	-	-	-	-	232.4	232.4
17	Total	1,649.3	-	188.2	-	347.2	12,257.2	246.5	-	748.6	707.4	733.9	-	-	-	15.9	16,894.2	14,468.7

Notes:

¹'Of which unrated' are those exposures for which a credit assessment by a nominated ECAI is not available and that are applied specific risk weights depending on their exposure class, as specified in Article 113 to Article 134 CRR.

12. Exposures to counterparty credit risk

This section sets out

- Counterparty credit risk ('CCR') methodology and policies
- CCR exposure by approach
- Transactions subject to own funds requirements for CVA risk
- CCR exposures by regulatory exposure class and risk weights
- Composition of collateral for CCR exposures
- Credit derivative exposures
- Exposures to CCPs

The Group's policies for counterparty credit risk, which are detailed below, relate to all central bank and institutional exposures, which are subject to different management and control processes to its lending to customers.

However, the definition in the Rulebook relates to derivatives only, and these are subject to special rules for the calculation of RWAE.

12.1. UK CCRA – QUALITATIVE DISCLOSURE RELATED TO CCR

(a) Methodology used to assign internal capital and credit limits for counterparty credit exposures (Article 439 (a) CRR)

Wholesale counterparty credit risk arises in the normal course of business primarily from investment of surplus cash, collateral and executing hedging derivatives with wholesale counterparties. The Group's cash balances are held in sterling at the Bank of England, at highly rated banks in current accounts, and, from time to time, as short fixed-term money market deposits.

Exposures to derivatives counterparties are calculated using the Standardised Approach for Counterparty Credit Risk ('SA-CCR'), which includes exposures to central counterparties CCP's. The Group has been centrally clearing certain eligible derivatives with a CCP since 2019.

The SA-CCR methodology considers the fair value and collateral held in the calculation of 'Replacement cost' The exposure value to the counterparty is multiplied by a counterparty risk-weight based on its external credit assessment (Section 11, UK CRD) to determine the total Risk Weighted Exposure Amount ('RWEA'), which determines the level of capital required for counterparty credit risk.

In order to adhere to the Large Exposures regulatory requirements, a firm's exposures to a counterparty or connected counterparties must not exceed 25% of its eligible capital. To control large exposures and to provide a buffer against the regulatory limit, the Group's counterparty credit limits for its exposures (including connected counterparties) are set within this. Credit risk limits are determined by a combination of factors including the counterparty's credit rating and size.

Credit risk limits for all counterparties are reviewed at least annually and any changes in credit rating or outlook are provided to ALCO monthly. There are minimum credit rating requirements for wholesale counterparty exposures.

The Group does not assign internal capital, therefore methodology to assign is not applicable.

(b) Policies related to guarantees and other credit risk mitigants (Article 439 (b) CRR)

The Group uses derivatives to reduce exposure to market risks. Such derivatives create counterparty credit risk. These instruments are transacted with institutions which meet a minimum credit rating criteria and are collateralised under market standard documentation.

The majority of new derivatives which are not part of funding structures are centrally cleared through a Counterparty Party ('CCP'), London Clearing House Limited ('LCH'), for which the Group posts variation and initial margin. For uncleared derivatives, the Group's method of documenting derivative activity is the International Swaps and Derivatives Association ('ISDA') Master Agreement. In all such cases a Credit Support Annex ('CSA') is executed in conjunction with the ISDA Master Agreement to mitigate credit risk on the derivatives portfolio.

Collateralisation of derivatives introduces the following material change in credit exposure:

- The posting of collateral reduces the impact of the current market value to the difference between the market value of the derivatives and the value of the collateral. This difference is limited by the operational use of 'thresholds' and 'minimum transfer amounts', which set criteria to avoid the movement of small amounts of collateral. For derivatives which form part of funding structures with derivative counterparties, the counterparties are only required to post collateral if they do not meet minimum credit rating criteria.

Derivative positions and collateral are valued daily and compared with counterparty valuations to agree collateral settlement. Market standard CSA collateral allows UK pounds sterling cash to be held as collateral by the Group.

Guarantees are not used to mitigate counterparty credit risk.

(c) Description of policies with respect to Wrong-Way risk (Article 439 (c) CRR)

"Wrong-way risk" may occur when:

- (a) the likelihood of default by a counterparty is positively correlated with general market risk factors; or
- (b) future exposure to a specific counterparty is positively correlated with the counterparty's probability of default.

The structure of the relationships with the Group's counterparties does not generate material wrong-way risk.

(d) Any other risk management objectives and relevant policies related to CCR (Article 431 (3) and (4) CRR)

The Group has four Global Master Repurchase Agreements with its counterparties. These transactions demonstrate the Group's ability to raise additional funding or monetise the Liquid Asset Buffer and have primarily been used to exchange retained securitisation notes in exchange for cash or gilts.

The Group has entered into a back-to-back long / short sale and repurchase transaction with a UK bank. To date, neither the Group nor the counterparty in the transaction has served notice to call.

(e) The amount of collateral the Group would have to provide if its credit rating was downgraded (Article 439 (d) CRR)

There are no agreements which would require collateral to be posted should the Group experience a credit rating downgrade.

12.2. UK CCR1 – ANALYSIS OF CCR EXPOSURE BY APPROACH

£m		a	b	c	d	e	f	g	h
		Replacement cost (RC)	Potential future exposure (PFE)	EEPE	Alpha used for computing regulatory exposure value	Exposure value pre-CRM ²	Exposure value post-CRM	Exposure value	RWEA
UK1	Original Exposure Method (for derivatives)	-	-		1.4	-	-	-	-
UK2	Simplified SA-CCR (for derivatives)	-	-		1.4	-	-	-	-
1	SA-CCR (for derivatives) ¹	274.6	35.9		1.4	973.2	434.7	434.7	130.8
2	IMM (for derivatives and SFTs)	-	-	-	-	-	-	-	-
2a	<i>Of which securities financing transactions netting sets</i>	-	-	-	-	-	-	-	-
2b	<i>Of which derivatives and long settlement transactions netting sets</i>	-	-	-	-	-	-	-	-
2c	<i>Of which from contractual cross-product netting sets</i>	-	-	-	-	-	-	-	-
3	Financial collateral simple method (for SFTs)	-	-	-	-	-	-	-	-
4	Financial collateral comprehensive method (for SFTs)					-	-	-	-
5	VaR for SFTs					-	-	-	-
6	Total					973.2	434.7	434.7	130.8
									See table UK OV1

Notes:

¹Under SA-CCR, exposure value post-CRM, being the exposure value adjusted for CRM techniques, (the impact of collateral), is the sum of RC (a) and PFE (b) multiplied by alpha of 1.4 (d) as prescribed by the PRA Rulebook. RWEA is the sum of the risk weighted counterparty exposures, which are weighted at either 50% or 20% dependent on PRA Rulebook ECAI mapping credit quality steps ('CQS') for uncleared balances or 4% for those cleared through the QCCP (Section 12.8 UK CCR8)

²Exposure value Pre-CRM is the exposure value calculated without the effect of CRM techniques, being the consideration of collateral.

12.3. UK CCR2 – TRANSACTIONS SUBJECT TO OWN FUNDS REQUIREMENTS FOR CVA RISK

		a	b
		Exposure value	RWEA
1	Total transactions subject to the Advanced method	-	-
2	<i>(i) VaR component (including the 3x multiplier)</i>		-
3	<i>(ii) stressed VaR component (including the 3x multiplier)</i>		-
4	Transactions subject to the Standardised method	246.5	118.6
UK4	Transactions subject to the Alternative approach (Based on the Original Exposure Method)	-	-
5	Total transactions subject to own funds requirements for CVA risk	246.5	118.6¹
			See table UK OV1

Notes:

¹Credit valuation adjustment applied to calculate total risk weighted exposure amounts in section 2.1, template UK OV1

12.4. UK CCR3 – STANDARDISED APPROACH – CCR EXPOSURES BY REGULATORY EXPOSURE CLASS AND RISK WEIGHTS

		a	b	c	d	e	f	g	h	i	j	k	l
		Risk weight											
	Exposure Classes	0%	2%	4%	10%	20%	50%	70%	75%	100%	150%	Others	Total exposure value
		£m	£m	£m	£m	£m	£m	£m	£m	£m	£m		
1	Central governments or central banks	-	-	-	-	-	-	-	-	-	-	-	-
2	Regional government or local authorities	-	-	-	-	-	-	-	-	-	-	-	-
3	Public sector entities	-	-	-	-	-	-	-	-	-	-	-	-
4	Multilateral development banks	-	-	-	-	-	-	-	-	-	-	-	-
5	International organisations	-	-	-	-	-	-	-	-	-	-	-	-
6	Institutions	-	-	188.2	-	-	246.5	-	-	-	-	-	434.7
7	Corporates	-	-	-	-	-	-	-	-	-	-	-	-
8	Retail	-	-	-	-	-	-	-	-	-	-	-	-
9	Institutions and corporates with a short-term credit assessment	-	-	-	-	-	-	-	-	-	-	-	-
10	Other items	-	-	-	-	-	-	-	-	-	-	-	-
11	Total exposure value	-	-	188.2	-	-	246.5	-	-	-	-	-	434.7

12.5. UK CCR4 – IRB APPROACH – CCR EXPOSURES BY EXPOSURE CLASS AND PD SCALE

This template applies to institutions that calculate the risk-weighted exposure amounts under the IRB approach. The Group does not use IRB therefore UK CCR4 has not been presented

12.6. UK CCR5 – COMPOSITION OF COLLATERAL FOR CCR EXPOSURES

Template CCR5 disclosure is only required under Article 438 (e) if both the fair value of collateral posted in the form of debt securities and the fair value of collateral received in that form exceed £125.0 billion. The Group does not exceed this threshold and therefore this template has not been presented.

12.7. UK CCR6 – CREDIT DERIVATIVES EXPOSURES

The Group does not use credit derivatives to mitigate credit risk and therefore template UK CCR6 has not been presented.

12.8. UK CCR7 – RWEA FLOW STATEMENTS OF CCR EXPOSURES UNDER THE IMM

The Group does not use the Internal Model Method ('IMM') for CCR exposures and therefore template UK CCR7 has not been presented.

12.9. UK CCR8 – EXPOSURES TO CCPS

£m		a	b	
		Exposure value	RWEA	
1	Exposures to QCCPs (total)		7.5	See table UK OV1
2	Exposures for trades at QCCPs (excluding initial margin and default fund contributions); of which	108.6	7.5	
3	(i) OTC derivatives	108.6	7.5	
4	(ii) Exchange-traded derivatives	-	-	
5	(iii) SFTs	-	-	
6	(iv) Netting sets where cross-product netting has been approved	-	-	
7	Segregated initial margin	111.0		
8	Non-segregated initial margin	-	-	
9	Prefunded default fund contributions	-	-	
10	Unfunded default fund contributions	-	-	
11	Exposures to non-QCCPs (total)		-	
12	Exposures for trades at non-QCCPs (excluding initial margin and default fund contributions); of which	-	-	
13	(i) OTC derivatives	-	-	
14	(ii) Exchange-traded derivatives	-	-	
15	(iii) SFTs	-	-	
16	(iv) Netting sets where cross-product netting has been approved	-	-	
17	Segregated initial margin	-		
18	Non-segregated initial margin	-	-	
19	Prefunded default fund contributions	-	-	
20	Unfunded default fund contributions	-	-	

Notes:

¹QCCP: 'qualifying central counterparty' or 'QCCP' means a central counterparty that has been authorised or recognised in accordance with the relevant regulation. The Group uses London Clearing House ('LCH') for this purpose.

13. Exposures to securitisation positions

This section sets out

- Information related to securitisation exposures
- Securitisation exposures in the non-trading book
- Exposures in default and specific credit risk adjustments

Securitisation positions, for capital purposes, are investments and other interests in securitisation transactions carried on an entity's balance sheet, which are subject to a specific capital regime. While the Group has been an active issuer of securitisation funding, these transactions have generally not resulted in the underlying assets being derecognised by the Group, which still includes their full exposure amount for capital purposes.

The single exception is Paragon Mortgages (No. 12) PLC, a legacy transaction, where the Group has no ongoing exposure.

13.1. UK -SECA - QUALITATIVE DISCLOSURE REQUIREMENTS RELATED TO SECURITISATION EXPOSURES

(a) Description of securitisation and re-securitisation activities (Article 449(a) CRR)

One of the Group's principal sources of funding has historically been asset securitisation. The largest part of this funding relates to securitisations issued under the 'Paragon Mortgages' programme but other issues have been made from time to time to support other parts of the business. In each of these transactions a group company acts as issuer of the securitised debt and group companies act as administrator of the assets after the completion of the deal.

The strategy underlying the Group's securitisation activities is to gain access to attractive funding rates for its lending activities and to mitigate liquidity risk by match funding the underlying loan assets. The structures are not intended to achieve significant transfer of credit risk away from the Group. The risk relating to the underlying assets therefore remains with the Group and is included in the credit risk analyses in this document.

In recent years the Group has retained a significant proportion of its securitisation note issuance, beyond the levels of retention required by regulation, and in 2020 all of the notes in the Paragon Mortgages (No. 27) PLC securitisation were retained. In November 2020 a further fully retained transaction, Paragon Mortgages (No. 28) PLC was completed. These notes, which have the benefit of the credit enhancement structure of the securitisation and are externally rated, are well-suited to being pledged as security to access other funding or liquidity sources.

For accounting purposes the Group's securitisation transactions are treated as financing transactions and the externally issued notes are included in balance sheet liabilities. The underlying assets are not derecognised, and no profit or loss is recognised at the time of the transaction. For regulatory capital purposes the securitisation transactions do not meet the threshold for significant risk transfer and no securitisation exposures are included in RWA.

There are no specific capital requirements for the Group's securitisation vehicle companies.

The Group has no exposures to purchased securitisation positions.

(b) The type of risk the Group is exposed to in securitisation and re-securitisation activities (Article 449(b) CRR)

(i) risk retained in own-originated transactions;

The Group has no additional risk from its securitisation transactions, over and above those inherent in the assets funded by the arrangement.

The Group does not undertake re-securitisation activities.

(ii) risk incurred in relation to transactions originated by third parties

The Group has no interests in securitisation transactions originated by third parties.

(c) Approaches to calculating the risk-weighted exposure amounts (Article 449(c) CRR)

Not applicable as the Group has no assets required to be risk weighted under the securitisation regime.

(d) A list of SSPEs (Article 449(d) CRR):

(i) SSPE which acquire exposures originated by the Group;

There are no SSPEs which have been set up to acquire securitisation exposures originated by the Group

(ii) SSPEs sponsored by the Group;

The Group does not act as sponsor, as defined in the CRR, in any securitisation transaction where it is not the originator.

(iii) SSPEs and other legal entities for which the Group provide securitisation-related services;

Apart from SSPE entities which are fully consolidated by the Group, it provides asset servicing and administration services for Paragon Mortgages (No. 12) PLC.

(iv) SSPEs and other legal entities for which the Group provide securitisation-related services;

The following SSPEs form part of the Group (and are listed in section 4.4, template UK LI3) and are fully consolidated for the purpose of capital calculations:

- Paragon Mortgages (No. 25) PLC
- Paragon Mortgages (No. 26) PLC
- Paragon Mortgages (No. 27) PLC
- Paragon Mortgages (No. 28) PLC
- Paragon Second Funding Limited
- Paragon Seventh Funding Limited

(e) Legal entities that the Group have disclosed that they have provided support in accordance with Chapter 5 of Title II of Part Three CRR (Article 449(e) CRR)

There are no legal entities which the Group has disclosed that it has provided support to in accordance with Article 449(e) of the CRR.

(f) A list of legal entities affiliated with the Group and that invest in securitisations originated by the Group (Article 449(f) CRR)

There are no affiliated legal entities outside the Group which invest in securitisations originated by the Group.

(g) A summary of accounting policies for securitisation activity (Article 449(g) CRR)

Under IFRS 9, where an entity transfers a financial asset, it must evaluate the extent to which it retains the risks and rewards of ownership in order to determine whether it may be derecognised. In the case of its securitisation transactions, the Group retains substantially all of the risks and rewards of ownership of the financial assets and therefore the assets are not derecognised.

Securitisation liabilities are only recognised to the extent that they are acquired by a third party

(h) The names of the ECAs used for securitisations and the types of exposure for which each agency is used (Article 499(h) CRR)

Not applicable as the Group has no securitisation exposures falling to be risk weighted under the securitisation regime.

(i) A description of the Internal Assessment Approach (Article 449(i) CRR)

Not applicable because the Group has not adopted the Internal Assessment Approach and there are no applicable securitisation exposures.

13.2. UK -SEC1 - SECURITISATION EXPOSURES IN THE NON-TRADING BOOK

The Group does not have securitisation exposures in the non-trading book and therefore template UK SEC1 has not been presented.

13.3. UK -SEC2 - SECURITISATION EXPOSURES IN THE TRADING BOOK

The Group does not have a trading book and therefore template UK SEC2 has not been presented.

13.4. UK -SEC3 - SECURITISATION EXPOSURES IN THE NON-TRADING BOOK AND ASSOCIATED REGULATORY CAPITAL REQUIREMENTS - INSTITUTION ACTING AS ORIGINATOR OR AS SPONSOR

No such exposure therefore this template has not been presented.

13.5. UK-SEC4 - SECURITISATION EXPOSURES IN THE NON-TRADING BOOK AND ASSOCIATED REGULATORY CAPITAL REQUIREMENTS - INSTITUTION ACTING AS INVESTOR

The Group does not have any securitisation exposures in which the Group acts as an investor.

13.6. UK-SEC5 - EXPOSURES SECURITISED BY THE INSTITUTION - EXPOSURES IN DEFAULT AND SPECIFIC CREDIT RISK ADJUSTMENTS

This table includes assets of the Paragon Mortgages (No. 12) PLC transaction. This is the only transaction where the Group has acted as originator, but has derecognised the assets.

		a	b	c
		Exposures securitised by the institution – institution acts as originator or as sponsor		
		Total outstanding nominal amount		Total amount of specific credit risk adjustments made during the period
			Of which exposures in default	
		£m	£m	£m
1	Total exposures	446.8	5.3	(0.7)
2	Retail (total)	446.8	5.3	(0.7)
3	<i>residential mortgage</i>	446.8	5.3	(0.7)
4	<i>credit card</i>	-	-	-
5	<i>other retail exposures</i>	-	-	-
6	<i>re-securitisation</i>	-	-	-
7	Wholesale (total)	-	-	-
8	<i>loans to corporates</i>	-	-	-
9	<i>commercial mortgage</i>	-	-	-
10	<i>lease and receivables</i>	-	-	-
11	<i>other wholesale</i>	-	-	-
12	<i>re-securitisation</i>	-	-	-

14. Standardised approach and internal model approach for market risk

This section sets out

- Strategies and processes to manage market risk

In some cases, generally where a bank undertakes trading in financial instruments, the PRA Rulebook requires the calculation of RWEAs in respect of market risk (such as interest rate risk or foreign exchange risk). The Group is exposed to market risk, but as this is only ancillary to its lending and deposit taking activities, it is not required to calculate an amount for market risk in its capital assessment.

14.1. UK MRA: QUALITATIVE DISCLOSURE REQUIREMENTS RELATED TO MARKET RISK

(a) Strategies and processes to manage market risk ((a) and (d) of Article 435 (1) CRR)

The Group's market risk principally arises from interest rate risk in the banking book ('IRRBB'), as it does not have a trading book. Most of the exposure to market risk arises from fixed-rate mortgages and savings. To reduce the impact of such movements, interest and hedging activities are undertaken by the Group's Treasury function.

The Group does not seek to generate income from taking market risk, and therefore seeks to minimise its exposures by matching the repricing basis and repricing tenor of assets and liabilities or by hedging with derivatives. The capital required to cover any residual exposure is examined annually as part of the ICAAP.

The Board is responsible for setting market risk appetite and ALCO is responsible for managing the Group's market risk profile within this defined risk appetite. Market risk is managed within board-approved risk appetite limits with comprehensive treasury policies in place.

The Group's Principal Risk Policy for Market Risk is reviewed and approved annually by the RCC with review provided by ALCO.

The Group has tight limits in place to mitigate and allow effective monitoring of market risk. The key measures utilised by the Group include economic value ('EV') and earnings-based measures. These metrics are monitored and reported weekly.

(b) Structure and organisation of the market risk management function ((b) of Article 435 (1) CRR)

The Board is responsible for setting the Group's market risk strategy which is outlined in the Market Risk - Principal Risk Policy. ALCO, to which the Board has delegated the day-to-day management of market risk, performs its duties in accordance with board risk appetite, its Terms of Reference and regulatory requirements.

(c) Scope and nature of risk reporting and measurement systems ((c) of Article 435 (1) CRR)

The principal market risks that affect the Group comprise mostly IRRBB, with a small exposure to foreign exchange risk. The main components of IRRBB are listed below, together with the types of risk reporting measures used to manage them:

Interest Rate Risk Exposure	Definition	Reporting Measure
Duration risk	The risk created when interest rates on assets, liabilities and off-balance sheet items reprice at different times causing them to move by different amounts	EV sensitivity / Net interest income sensitivity / PV01 gaps
Basis risk	The risk arising where assets and liabilities re-price with reference to different reference interest rates, for example rates set by the Group and market rates, such as Bank of England base rate or SONIA. Relative changes in the difference between the reference rates over time may impact earnings	Net interest income sensitivity
Optionality risk	The risk that settlement of asset and liability balances at different times from those forecast due to economic conditions or customer behaviour may create a mismatch in future periods	EV sensitivity / Net interest income sensitivity

The Group has a capital requirement for interest rate risk, set at a Bank level and separately at a group level.

Currency risk, also referred to as foreign exchange or forex risk, is the risk that the fair value or future cash flows of a financial instrument will fluctuate because of changes in foreign exchange rates. The Group has little appetite for material amounts of exposure to currency risk and applies a hedging strategy for any material open positions through the use of spot or forward contracts or derivatives. As a result of these arrangements, the Group has no material exposure to foreign currency risk.

14.2. UK MR1 - MARKET RISK UNDER THE STANDARDISED APPROACH

The Group is not required to calculate an exposure amount for market risk and therefore template UK MR1 has not been presented.

14.3. UK MRB: QUALITATIVE DISCLOSURE REQUIREMENTS FOR INSTITUTIONS USING THE INTERNAL MARKET RISK MODELS

The Group does not use an Internal Market Risk Model for market risk and therefore template UK MRB has not been presented.

14.4. UK MR2-A - MARKET RISK UNDER THE INTERNAL MODEL APPROACH ('IMA')

The Group does not use an IMA for market risk and therefore template UK MRB has not been presented.

14.5. UK MR2-B - RWA FLOW STATEMENTS OF MARKET RISK EXPOSURES UNDER THE IMA

The Group does not use an IMA for market risk and therefore this template has not been presented.

14.6. UK MR3 - IMA VALUES FOR TRADING PORTFOLIOS

The Group does not have any trading portfolios and therefore this template has not been presented.

14.7. UK MR4 - COMPARISON OF VAR ESTIMATES WITH GAINS / LOSSES

The Group does not use the Internal Model Approach for market risk and therefore this template has not been presented.

15. Exposures to interest rate risk on positions not held in the trading book

This section sets out

- Risk management objectives and policies
- Quantitative information on IRRBB

This section describes the Group's IRRBB position, which arises from the interaction between fixed and floating interest rates on the Group's lending portfolios, customer deposits and borrowings, together with derivative positions established to hedge against those risks.

15.1. UK IRRBBA - IRRBB RISK MANAGEMENT OBJECTIVES AND POLICIES

(a) A description of how the institution defines, measures, mitigates and controls IRRBB for the purposes of risk control and measurement.

The Group's interest rate risk arises in the banking book; it does not have a trading book. Interest rate risk, which is defined as the risk of changes in the net value of, or net income arising from, the Group's assets and liabilities from adverse movements in market prices, is a key component of the Group's market risk framework.

The Board is responsible for setting market risk appetite and ALCO is responsible for managing the Group's market risk profile, including interest rate risk, within this defined risk appetite.

Market risk is managed within board-approved risk appetite limits with comprehensive treasury policies in place to ensure that the risks posed by changes and mismatches in interest rates are effectively managed. Day-to-day management of interest rate risk within board-approved limits is the responsibility of Treasury, with control and oversight provided by ALCO.

Consistent with other risk categories, IRRBB is subject to the Group's 'three lines of defence model' with oversight undertaken by Second Line (Prudential Risk) and assurance provided by Third Line (Internal Audit).

The key elements of IRRBB to which the Group is exposed are:

- Duration or re-pricing risk. The risk created when interest rates on assets, liabilities and off-balance sheet items reprice at different times causing them to move by different amounts
- Basis risk. The risk arising where assets and liabilities re-price with reference to different reference interest rates, for example rates set by the Group and market rates, such as Bank of England base rate, SONIA and, before its withdrawal, LIBOR. Relative changes in the difference between the reference rates over time may impact earnings
- Optionality or prepayment risk. The risk that settlement of asset and liability balances at different times from those forecast due to economic conditions or customer behaviour may create a mismatch in future periods

(b) A description of the institution's overall IRRBB management and mitigation strategies.

IRRBB specifically is managed and mitigated through a combination of:

- monitoring and reporting risk exposures
- matching or offsetting exposures
- appropriate use of derivatives
- the design of appropriate product features, such as early repayment charges

(c) The periodicity of the calculation of the institution's IRRBB measures, and a description of the specific risk measures that the institution uses to gauge its sensitivity to IRRBB, including changes to its economic value and earnings.

Interest rate risk is measured using a combination of economic value and earnings-based measures. This includes Economic Value ('EV') and Net Interest Income ('NII') sensitivities. EV and NII sensitivities are measured on a weekly basis but can be assessed more frequently in the event of changes to the run rate of loan originations and deposit flows, or in the event of external market conditions changing. Internal risk limits are set for these metrics.

These measures are complemented by more granular metrics, such as PV01 risk limits set for various tenors, in addition to basis spread stresses, both of which are monitored intra-week.

(d) A description of the interest rate shock and stress scenarios that the institution uses to estimate changes in its economic value and in earnings.

The Group's EV and NII sensitivities are calculated according to a set of severe but plausible interest rate shocks which consider the main repricing gaps evident in the Group's balance sheet, in order to understand the type of stressed interest rate shift that would be most impactful for the Group.

- +145 basis points parallel shock up
- -145 basis points parallel shock down
- Short rates shock up followed by long rates shock down ('SULD')
- Short rates shock down followed by long rates shock up ('LUSD')

In addition, the Group calculates EVE and NII sensitivities in accordance with the regulator's six prescribed interest rate shocks, as part of the PRA's Supervisory Outlier Test ('SOT') (results of which are shown in template UK IRRBB1).

- Parallel shock up
- Parallel shock down
- Steepener shock
- Flattener shock
- Short rates shock up
- Short rates shock down

(e) A high-level description of key modelling and parametric assumptions used in calculating change in economic value of equity (' Δ EVE') and change in net interest income (' Δ NII') in Template UK IRRBB1.

EVE sensitivity

The key assumptions used in calculating in the EVE sensitivity shown in template UK IRRBB1 are as follows:

- The sensitivity represents the difference between the present value of assets and liabilities in a baseline scenario and the shock scenario
- The balance sheet at the report date is run off over its remaining expected duration
- The yield curve at the report date is instantaneously shocked in line with the six prescribed scenarios. This includes GBP rates being shocked by 250 basis points in the parallel shocks. A floor of -100 basis points is applied then unwound by 5 basis points per annum for twenty years until the rate returns to 0%. This floor and assumed recovery is consistent with regulations and is applied to the relevant shock scenarios where rates would otherwise become significantly negative
- The Group's own equity is excluded
- Commercial margins are included with cash flows but excluded from discount rates
- Contractual repricing maturities are used except for motor finance loans which are adjusted to reflect the prepayment of fixed-rate car loans
- Non-maturing deposits ('NMDs') are assumed to reprice overnight

NII sensitivity

The key assumptions used in calculating the NII sensitivity shown in template UK IRRBB1 are as follows:

- Static balance sheet over a one-year horizon, with all assets and liabilities maturing within the year reinvesting in like-for-like products

- The prevailing interest rates at the report date are held constant over the one-year horizon to which instantaneous parallel interest rate shocks are applied, with GBP rates shocked at +/- 250 basis points. Unlike the EVE sensitivity, no rate floor is applied
- It is assumed that changes in interest rates are fully passed through to retail products, which includes managed rate variable products
- The sensitivities do not include any management actions which could be taken in response to a change in interest rates
- The values are reported on a pre-tax basis

(f) A description of significant modelling assumptions used in the institution's internal measurement systems ('IMS') for purposes other than disclosure that differ from the modelling assumptions prescribed for the disclosure in Template UK IRRBB1, including their directional implications and the rationale for those differences.

There are no significant differences in modelling assumptions.

(g) A high-level description of how the institution hedges its IRRBB, as well as the associated accounting treatment.

Interest rate risk is hedged primarily through a combination of matching or offsetting exposure and the appropriate use of derivatives.

The Group seeks to minimise its exposures to interest rate risk by matching the repricing basis and repricing tenor of assets and liabilities. Where the tenor of fixed rate deposits does not broadly match the maturity profile of fixed rate loans, the loans will generally be hedged with interest rate swaps through which exposure to fixed rates will be converted to SONIA.

The Group uses the portfolio fair value hedging approach set out in IAS 39 to account for interest rate hedging activities related to lending and deposit taking.

(h) Any other information which the institution wishes to disclose regarding its interpretation of the significance and sensitivity of the IRRBB measures disclosed and/or an explanation of any significant variations in the level of the reported IRRBB since previous disclosures.

EVE sensitivity

EVE sensitivity measures the change in the value of the Group's assets and liabilities, excluding equity, arising from a change in interest rates.

The Group's most severe EVE sensitivity is the upward parallel yield curve shock which would result in a decline in EVE of £28 million. This represents a Supervisory Outlier Test result of 2.3% (Δ EVE as a percentage of Tier 1 capital) which is within the regulatory 15% threshold.

The sensitivity arises mainly due to the assumed change in customer behaviour in the scenario given the implicit optionality in the fixed rate loan pipeline, and the impact of short-term timing mismatches which may arise from the hedging of fixed rate products.

NII sensitivity

NII sensitivity measures the extent to which NII is affected by changes in interest rates.

NII sensitivities will vary over time due to several factors, such as the timing of maturing assets and liabilities, product pricing, market conditions, and strategic changes to the balance mix. As such, they should not be considered as a guide to future performance.

The downward parallel yield curve shock, which assumes a 250 basis point reduction in GBP interest rates, is the Group's most severe NII sensitivity with a reduction in NII of £20 million. This is calculated over a one year time horizon and the NII sensitivity is mainly driven by buy-to-let mortgages, linked to Term SONIA, which are funded by liabilities which are linked to SONIA and Bank of England base rate.

(i) Average repricing maturity assigned to non-maturing deposits ('NMD's).

The average repricing maturity assigned to NMDs is 1 day. This is calculated using balances which are assumed to reprice overnight (including easy access deposits).

(j) Longest repricing maturity assigned to NMDs.

The longest repricing maturity assigned is 1 day.

15.2. UK IRRBB1 - QUANTITATIVE INFORMATION ON IRRBB (2022)

		a	b	c	d	e	f
	£m	ΔEVE		ΔNII		Tier 1 capital	
	Period	30 Sep 22	30 Sep 2021 ¹	30 Sep 22	30 Sep 2021 ¹	30 Sep 22	30 Sep 2021 ¹
010	Parallel shock up	(28.1)	-	19.7	-		
020	Parallel shock down	31.3	-	(19.7)	-		
030	Steeper shock	5.2	-				
040	Flattener shock	(10.2)	-				
050	Short rates shock up	(18.8)	-				
060	Short rates shock down	19.5	-				
070	Maximum	(28.1)	-	(19.7)	-		
080	Tier 1 capital					1,221.8	-

Note:

¹ΔEVE and ΔNII for September 2021 has not been presented as this pre-dates the Group's adoption of the Supervisory Outlier Test ('SOT') requirement.

16. Operational risk

This section sets out

- Risk management
- Operational risk own funds requirements and risk-weighted exposures

Banks are required to carry capital against the risk of losses being incurred through operational risk incidents, which might deplete the strength of the organisation's balance sheet. This section discusses the Group's exposure to and approach to managing operational risk, and how the capital requirement is calculated.

16.1. UK ORA - QUALITATIVE INFORMATION ON OPERATIONAL RISK

(a) Risk management objectives and policies ((a), (b), (c) and (d) of Article 435(1) CRR)

Strategies and Processes

Operational risk is defined by the Group as the risk of financial and non-financial detriment resulting from inadequate or failed internal procedures, people and systems or from external events. Operational risk within the Group is further broken down into a number of sub-categories which facilitates accountabilities, day to day management and appropriate analysis and reporting. These include People, Third Party, Information Technology and Security, Financial Crime and Data Management.

Understanding the Group's operational risks enables the business to make informed decisions, and ultimately creates added value for stakeholders. The overarching strategy in respect of operational risk is to:

- Embed sound management practices for operational risk within the overall risk culture of the Group
- Ensure that an appropriate and proportionate system of internal control is in place to manage operational risks
- Provide independent oversight and challenge to the business units in the first line of defence to ensure all key risks are identified, assessed, managed, monitored, and reported on in a timely manner
- Work with business units to ensure minimal losses are suffered
- Collaborate and align with other principal risks where necessary, as well as other risk disciplines such as operational resilience, to drive a consistent approach to managing risk

Operational risk is governed by the Operational Risk Management Framework ('ORMF') which is designed to support the achievement of the Group's strategic objectives within the Board's risk appetite whilst complying with regulatory requirements. The ORMF comprises of several interlinked components which support the Group's effective identification, assessment, management, monitoring and reporting of its operational risks. These components have key roles to play within the risk management lifecycle, all working together to improve upon the risk and control landscape. These components include: Risk and Control Self-Assessment ('RCSA'), Internal Controls, Key Indicators, Risk Events, Action Plans and Scenario Analysis.

Structure and organisation of risk management function for operational risk

The 'Three Lines of Defence' model has been adopted as the overarching approach to risk management within the Group. This is a governance model which ensures appropriate responsibility is allocated for the management, reporting and escalation of risk. Allocation of clear responsibilities for risk management ensures risks are identified, monitored, managed and mitigated where required in order that they remain within the Board's risk appetite.

The Second Line of Defence has a dedicated Operational Risk team which is specifically responsible for:

- Ownership and management of the ORMF and the policies and policy standards that fit within this framework
- Oversight and challenge of the adequacy and effectiveness of the risk and control processes operating within the business
- Oversight and challenge of business adherence to the ORMF

- Undertaking targeted operational risk and control reviews where appropriate

The Operational Risk Committee ('ORC') is the primary oversight committee for operational risk. This committee feeds into the ERC which supports the RCC and ultimately the Board in executing its risk responsibilities.

Risk measurements and control

Identification and assessment of risks is undertaken across the organisation and relies on input from all levels of management. Across the Group risks are considered from both a "top down" approach, which includes scenario analysis, and a "bottom up" perspective through RCSA to ensure full coverage of the risks the Group faces. These approaches enable appropriate analysis, review and challenge.

The components of the ORMF all play a role in supporting the Group's effective identification, assessment and management of its operational risks, and all support risk and capital management and assessment. These components work together to form a toolkit for the management of operational risk.

Given the disparate nature of risks that are classified within the operational risk category in the Group's taxonomy, considerable effort has been, and continues to be, made to ensure that operational risks are consistently understood and defined across the Group. A programme of continuous improvement is in place to embed understanding and ensure that all material operational risks are fully articulated within the policy framework and have appropriate appetites and measures in place to ensure ongoing tracking. Significant effort has been made during the year to increase coverage in this respect and to enhance the reporting of measures across the committee structures. The policy framework promotes better discipline in defining the key controls to manage the suite of operational risks. These controls can then be fully assessed and tested as part of the risk and control assessment process.

Since 2020 the Group's operational risk profile has been heavily influenced by the impacts of the Covid pandemic. The ability of the Group to react quickly and robustly to the new operating environment with hybrid working and the rapid response to process changes through the introduction of government relief schemes, demonstrated the robustness of the Group's operational risk and resilience framework. However, during the year ended 30 September 2022, the risk landscape has evolved, and the operational risk impacts of wider economic and geopolitical issues have taken precedence. The cost of living crisis will undoubtedly raise more challenges as the Group considers how this will impact its customer base and also its employees. The Group remains committed to achieving the right outcomes for its customers and ensuring customers in vulnerable circumstances receive appropriate and tailored support.

The Group continues to focus on enhancing its financial crime framework as a key strategic priority and has invested further in systems and resources to ensure it is well placed to meet current and future legislative requirements. A strong financial crime framework has been critical in the Group's response to the war in Ukraine ensuring it has been able to respond quickly and effectively to sanctions imposed on Russia. In parallel, the Group continues to focus on its cyber controls given heightened threat assessments posed by this situation.

Operational risk reporting

The structure, content, and presentation of Management Information ('MI'), including the supporting reporting processes required, is a key component of the ERMF and informs decision making at all levels across the organisation.

Detailed operational risk MI is presented at the ORC. This includes information supplied from various areas of the Group, which includes:

- Risk appetite metrics reflecting how the various categories of operational risk are tracking against board and executive level risk appetites
- Key indicator breaches and associated action plans to address any risk exposure
- New and emerging external trends in order to identify any potential read-across for the Group
- Any major risk events that have occurred since the previous reporting period
- An overview of risk events and losses position, highlighting the movement of losses and actual losses suffered in the current month, and risk event volumes and emerging or ongoing trends
- Individual updates from across the business

The Group maintains a central risk system which contains the source operational risk data. All data is mapped against the operational risk categories and risk events are mapped against causal categories as well as being reported against the operational risk categories defined by the BCBS in the Basel III framework - which allows comparison with peer organisations.

As the framework matures, an ongoing review is being undertaken to ensure that reporting consistently aligns to the Group's risk universe facilitating enhanced analysis.

Policies for hedging and mitigating operational risk

Ensuring the adoption of a consistent approach to the creation, ongoing management and closure of action plans forms part of a strong ORMF, one that ensures risks and controls are being managed within risk appetite and are aligned with the Group's strategic objectives. Business areas are required to capture and address actions in a timely manner. Actions articulate the appropriate risk treatment as defined under the Group's ERMF which include the following:

- *Mitigate* – enhance controls to bring the risk down to an acceptable level which can be tracked through the ORC
- *Accept* – accept that, due to time or resource constraints, a risk cannot be brought down to within appetite. This is supported by a formal Risk Acceptance process with individual acceptances reviewed on a regular basis to ensure ongoing appropriateness
- *Transfer* – put in place measures to transfer the impact of the risk to a third party, for instance, by taking out insurance under the Group's corporate insurance framework which ensures that appropriate insurance policies are in place against key operational risk exposures, such as cyber and fraud risks
- *Avoid* – cease the activity that gives rise to the risk, for example, by withdrawing a product or removing a distribution channel

Minimum controls in managing individual operational risks are documented within the respective policy to ensure operational risks are managed and mitigated consistently across all areas of the Group.

(b) Approaches for the assessment of minimum own funds requirements (Article 446 CRR)

The Basic Indicator Approach ('BIA') is used to calculate RWAE for operational risk and hence Pillar 1 operational risk funds requirements across the Group as a whole.

(c) Description of the AMA methodology approach used (Article 446 CRR)

This is not applicable to the Group as no Advanced Measurement Approach ('AMA') is used.

(d) Use of insurance for risk mitigation in the Advanced Measurement Approach (Article 454 CRR)

This is not applicable to the Group as an AMA is not used.

16.2. UK OR1 - OPERATIONAL RISK OWN FUNDS REQUIREMENTS AND RISK-WEIGHTED EXPOSURE AMOUNTS

For organisations of the Group's size the BIA own funds requirement is calculated as 15% of the average relevant income for the past three financial years. RWAE is derived from the own funds requirement.

		a	b	c	d	e
	Banking activities	Relevant indicator			Own funds requirements	Risk weighted exposure amount
	£m	Year-3	Year-2	Last Year		
1	Banking activities subject to basic indicator approach (BIA)	296.7	326.0	390.2	50.6	633.1
2	Banking activities subject to standardised (TSA) / alternative standardised (ASA) approaches	-	-	-	-	-
3	<u>Subject to TSA:</u>					
4	<u>Subject to ASA:</u>					
5	Banking activities subject to advanced measurement approaches ('AMA')	-	-	-	-	-
						See table UK OV1

17. Remuneration policy

This section sets out

- Remuneration policy
- Remuneration awarded for the financial year

The section sets out matters relating to the Group's remuneration policies, particularly those relating to Material Risk Takers ('MRT's) including senior management. This disclosure is required to be made for Paragon Bank PLC, but all of the people involved also exercise their roles at a group level.

17.1. UK REMA - REMUNERATION POLICY

(a) Information relating to the bodies that oversee remuneration:

i. Name, composition and mandate of the main body

The Company and the Bank's Remuneration Committee ('RemCo') is responsible for determining and agreeing the remuneration strategy, how the strategy is reflected in the remuneration policy and the specific remuneration packages for the Group's Chair, the executive directors and other members of the Executive Committee, as well as any other employees who are deemed to fall within the scope of the Remuneration Part of the PRA Rulebook and SYSC 19D of the FCA Handbook.

The RemCo also oversees how the remuneration policy is applied across the wider employee base, with a specific focus on the risks posed by remuneration policies and practices.

There were five scheduled RemCo meetings held during the financial year.

The terms of reference for the RemCo have been approved by the Company and Bank's Board of Directors (and are available on the Group's corporate website www.paragonbankinggroup.co.uk).

Remuneration Committee composition

RemCo during the year comprised the following independent non-executive directors (both Chairs of the Board being considered independent at the time of their respective appointments in accordance with the UK Corporate Governance Code):

Name	Period of appointment
Hugo Tudor (Chair of the Committee)	All year
Fiona Clutterbuck (Chair of the Board)	Until 1 September 2022
Robert East (Chair of the Board)	From 1 September 2022
Tanvi Davda	From 1 September 2022
Alison Morris	All year
Graeme Yorston	All year

ii. External consultants whose advice has been sought, the body by which they were commissioned, and in which areas of the remuneration framework.

PricewaterhouseCoopers LLP ('PwC') are appointed as the Committee's independent external consultants. Their advice was sought across the whole spectrum of the Committee's mandate including the revised Directors' Remuneration Policy due to be put to the Company's AGM in March 2023 and the operation of the regulatory requirements on remuneration across the Group. PwC were appointed by the Committee following a tender process in the financial year ended 30 September 2021 and are members of the Remuneration Consultants Group and as such voluntarily operate under its Code of Conduct in relation to executive remuneration in the UK.

iii. The scope of the institution's remuneration policy

The Group's remuneration policy comprises:

- The Directors' Remuneration Policy, which applies to the executive directors of the Company and the Bank only
- The Internal Remuneration Policy (for all employees and which is reflective of the Directors' Remuneration Policy). The Internal Remuneration Policy provides no greater level of benefit nor any lower level of risk tolerance than the Directors' Remuneration Policy
- Various related sub-policies on specific matters such as Malus and Clawback

Both the Directors' Remuneration Policy and the Internal Remuneration Policy are reviewed by RemCo on at least an annual basis.

Additionally, an annual review of the implementation of remuneration policies is undertaken by the Group's Internal Audit function. This review assesses the compliance level of the Group's remuneration policy against the remuneration regulations of the PRA and FCA. The outcome of the review is considered by RemCo, which ensures that any steps necessary to maintain compliance are taken.

The Group does not have any subsidiaries or branches outside of the UK.

iv. Staff or categories of staff whose professional activities have a material impact on institutions' risk profile

Material Risk Takers ('MRTs') identified for the financial year ended 30 September 2022 are those individuals whose professional activities have a material impact on the Group's risk profile, based on, but not limited to, the qualitative and quantitative criteria as required by relevant regulations. MRTs are identified by reviewing individual responsibilities within a role and assessing the materiality of the impact the role could have on the risk profile of the Group.

During the 2022 financial year there were 64 MRTs. Those identified as MRTs include, but are not limited to:

- Executive and non-executive directors of the Group and senior management (being the other members of the Group's Executive Committee)
- Other staff with key functional or managerial responsibility, including senior managers of control functions such as audit and risk
- Other risk takers, including those identified against the Group's internally developed criteria, whose professional activities could have a material impact on the Group's risk profile

(b) Information relating to the design and structure of the remuneration system for identified staff:

i. An overview of the key features and objectives of remuneration policy

Objectives

The key objectives of the remuneration policies are to support and promote long-term sustainable success. Executive remuneration is aligned to the Company's purpose, values and the successful delivery of long-term strategy

Structure

There are three main elements for employees (including MRTs):

- Fixed pay, comprising:
 - Base salary
 - Benefits (including pension, car benefits and healthcare)
- Variable pay

Fixed pay

All employees receive salary, or in the case of non-executive directors, fees. Salary levels are reviewed annually in line with performance, skills and experience and considering market data. Pension and other benefits are provided as part of a competitive reward package. Fixed pay may also include cash in lieu of pension and other cash allowances, such as car allowance, in accordance with market practice. The executive directors receive a Role Based Allowance ('RBA') which is paid quarterly in shares and released over five years in equal tranches, it is not subject to performance conditions. These pay elements are categorised as fixed pay as they are based on predetermined criteria, are non-discretionary, are transparent and are not reduced based on performance.

Non-executive directors do not benefit from any performance awards or from any pension arrangements. Non-executive directors are paid a basic fee, with an additional supplement paid for additional roles or responsibilities, including acting as Senior Independent Director, or for serving on, or chairing, a board committee. Fees are set considering practice at other organisations as well as the time commitment required for the role. The Chair's fee is normally reviewed and approved by the Committee on an annual basis. The fees paid to non-executive directors are normally reviewed and approved by the Chair and the executive directors annually. Non-executive directors receive reimbursement for any reasonable expenses.

Variable pay

Variable pay for the year ended 30 September 2022 was delivered in accordance with the Group's Directors' Remuneration Policy and its Internal Remuneration Policy. Consideration is given to individual performance against objectives which are agreed through annual financial and non-financial targets. Bonus awards are based on a combination of group performance, business lines' performance and personal performance. The Committee will only approve performance related pay if it is sure the Group is financially secure. During 2022 all variable pay operated within the policy framework.

RemCo is responsible for determining and agreeing the remuneration strategy and the remuneration policy for all MRTs. This includes approving the design of, and determining the performance targets for, any discretionary performance bonus operated by the Group for the benefit of these employees. RemCo also approves the outcomes of any performance award and reviews the year-end pay outcomes for all these employees. RemCo is supported by the Chair of the RCC, and the CRO, on risk-related matters including pay plan design, the assessment of specific performance measures, and wider issues relating to risk and controls. RemCo is also supported by and receives input from its independent external consultants, PwC.

Stakeholders

A revised Directors' Remuneration Policy, which is only applicable to the two executive directors of the Company and Bank, will be put to the Company's AGM in March 2023, and prior to finalising the Directors' Remuneration Policy discussions were held with a significant number of the Company's major shareholders. In renewing the Directors' Remuneration Policy, RemCo sought to address both specific feedback from and the evolving expectations of shareholders and other stakeholders. The Directors' Remuneration Policy is usually put to the AGM on a triennial basis. The Directors' Remuneration Report, is put to the AGM on an annual as required by the Companies Act 2006.

The People Forum, the Group's workforce engagement forum, provides an arena for discussion and feedback on executive and all-employee remuneration structures including the Directors' Remuneration Policy and the Internal Remuneration Policy. Meetings between the Forum and the Chair of RemCo to engage on executive remuneration, explain its operation and to discuss remuneration across the wider workforce, took place in November 2022 and November 2021 and form a regular part of the Forum's annual calendar.

ii. Information on the criteria used for performance measurement and ex ante and ex post risk adjustment.

The Group uses variable pay to align reward with performance. Measurement is designed to encourage high performance whilst supporting effective risk management. Individuals are only rewarded for the achievement of challenging objectives in line with the corporate plan and the extent to which their individual performance and behaviours are in line with the Group's culture and values. Objectives are reviewed on an annual basis. Awards reflect the measures that apply to all employees: displaying the competency behaviours set out in the person's job description, demonstrating the values of the Group, and acting in accordance with relevant risk management and risk appetite requirements.

The Group's approach to risk adjustment provides for a discretionary assessment of both 'ex ante' and 'ex post' risk adjustments, based on performance against risk appetite as set out in the ERMF and taking into account any risk events during the year from a conduct, reputational, financial or operational perspective.

Ex-ante risk adjustments are made in two ways. The first of these involves an assessment of the Group's performance against its established risk appetites during the period. This is relevant as forming the basis for the in-year assessment of the risk performance element of the Executive Director and Senior Manager annual bonus scheme and forming half of the risk element of the long term incentive award assessment. The second method involves a strategic assessment of the Group's risk performance. This is relevant as forming the basis for the assessment of the other half of the risk element of the long term incentive award.

All variable remuneration for MRTs is subject to risk adjustment. When reaching its determination of an appropriate level of risk adjustment, RemCo considers a range of factors, with input from the CRO and Chair of the RCC, as well as the output from the Risk Adjustment Review Group.

Ex-post risk adjustment applies to annual bonus awards for MRTs and long term incentive awards for all employees which are subject to malus and clawback provisions relating to circumstances including the following:

- A higher payment than would otherwise have been the case being paid as a result of a material misstatement of a group company's results
- Any error or inaccurate, misleading information or assumptions relating to a financial year
- Dismissal for misconduct
- Being party to behaviour that resulted in serious reputational damage to a group company or a relevant business unit
- Occurrence of a material corporate failure in a group company or relevant business unit
- Reasonable evidence of employee misbehaviour or material error
- Material failure of risk management within a group company or relevant business unit, taking account of the individual's proximity to and / or responsibility for the event
- Material downturn in the financial performance of a group company or relevant business unit
- Failure to meet appropriate standards of fitness and propriety
- Participation in or responsibility for conduct which resulted in significant losses to the Group
- Situations where there is a significant increase in the Group's or business unit's economic or regulatory capital base
- Regulatory sanctions where the conduct of the participant contributed to the sanction

Any variable awards may be reduced or cancelled before vesting or clawed back for a period of up to seven years from the grant date. This may be extended to ten years in the event of ongoing internal / regulatory investigation at the end of the seven-year period.

iii. Whether the management body or the remuneration committee where established reviewed the Group's remuneration policy during the past year, and if so, an overview of any changes that were made, the reasons for those changes and their impact on remuneration.

The Remuneration Committee reviewed the Group's Internal Remuneration Policy (applicable to all employees) during the year ended 30 September 2022 and made minor changes including clarifying the pension policy and providing additional detail with regard to buyouts. These changes were for clarification only and as such do not impact on remuneration levels.

The Directors' Remuneration Policy, which is only applicable to the two executive directors of the Company and the Bank, was reviewed in the year ended 30 September 2022 and the revised policy will be put to the Company's AGM in March 2023. Details of the revisions to the Directors' Remuneration Policy can be found in Section B7.3 of the Company's Annual Report and Accounts.

iv. Information of how the Group ensures that staff in internal control functions are remunerated independently of the businesses they oversee.

For control functions, remuneration is not determined within the business unit alone in order to avoid conflicts of interest. Remuneration is determined to ensure it adequately attracts qualified and experienced employees. The level of any bonus awards and /or pay increases considers individual talent ratings. Individual ratings relate to achievement of objectives tailored to control function roles, with no link to group performance.

For the senior officers within control functions (who are MRTs) annual bonus awards are more heavily weighted towards individual performance (currently 60%) than towards financial performance, future value and strategy, and risk (currently 40%) than for those MRTs in directly business facing functions. RemCo is responsible for setting and overseeing the remuneration for senior officers in control functions with specific input from the Chair of the RCC and the Chair of the Audit Committee.

v. Policies and criteria applied for the award of guaranteed variable remuneration and severance payments.

The Group will consider a guaranteed variable payment only where it is exceptional, and it occurs in the context of hiring new MRTs or specific specialist roles critical to the delivery of the Group's strategy. Guaranteed variable remuneration will be rare, limited to an employee's first year of service and will only be made if the Group has a sound and strong capital base. In addition, the Group may buy out contractual terms forfeited, for example previous relocation arrangements. Where it is deemed appropriate to grant a guaranteed variable payment, this will be subject to the Committee's approval and in line with regulatory requirements.

The Group's approach to retention awards is in line with the principles set out in the remuneration regulations. Retention awards are granted only in exceptional circumstances, such as a major corporate restructuring where a strong case can be made for retention of particular key staff members on prudential grounds. The Committee will approve any proposed retention awards for MRTs. Regulatory approval will also be required where a retention award is made to an MRT.

Any termination payments made to employees will reflect the terms of the contracts of employment or service contracts in place as well as the relevant incentive plan rules. There is no automatic or contractual right to incentive payments upon termination of employment. In exceptional circumstances, the Group reserves the right to consider the payment of additional termination payments provided such payments conform with any legal, statutory or regulatory requirements. Such payments will be structured so as to reflect performance achieved over time and to avoid rewarding failure or misconduct.

Any award for an MRT will be subject to Remco approval.

No termination payment, above contractual entitlements, will normally be awarded to any employee resigning to take up alternative employment and / or where there is an obvious failure which allows for the immediate cancellation of the contract or the dismissal of the employee

(c) Description of the ways in which current and future risks are taken into account in the remuneration processes.

Risk considerations are included within both the annual bonus considerations for MRTs and in the long term incentive plans for those in receipt of such awards (including MRTs).

In order to assist RemCo in its consideration of current and future risk matters the CRO will collate performance into a report summarising outcomes across a range of the Group's key risk areas. For the 2022 financial year these were capital and liquidity, operational risk events, conduct, credit losses, customer service and any regulatory breaches. The assessment will include a 'score' for each element of risk, combined into a total score which will then be reflected in a proposed adjustment to the maximum allowable risk element of any variable pay award. The Committee (including where possible the Chair of the RCC) will consider this report and use it to inform its determination of the appropriate level of adjustment to any variable pay award. The Committee may reduce or cancel the payment of variable remuneration where it deems appropriate in light of any emerging or potential risks.

Details of the approach to ex-post risk adjustment are included in section (b)(ii) and (f)(ii).

(d) The ratios between fixed and variable remuneration set in accordance with point (g) of Article 94(1) CRD.

In accordance with relevant regulatory requirements in 2021 the shareholders of the Company authorised it and its subsidiaries to apply a ratio of the variable to fixed components of remuneration for those individuals who are classified as MRTs of up to 2:1 (such that the variable component of total remuneration for each such individual shall not exceed 200% of the fixed component of total remuneration for that individual).

(e) Description of the ways in which the Group seeks to link performance during a performance measurement period with levels of remuneration

PRA Supervisory Statement SS2/17 requires this disclosure only for proportionality level 1 banks. As the Group is currently proportionality level 2, this has not been presented.

(f) Description of the ways in which the Group seeks to adjust remuneration to take account of long-term performance:

PRA Supervisory Statement SS2/17 requires this disclosure only for proportionality level 1 banks. As the Group is currently proportionality level 2, this has not been presented.

(g) The description of the main parameters and rationale for any variable components scheme and any other non-cash benefit in accordance with point (f) of Article 450(1) CRR:

PRA Supervisory Statement SS2/17 requires this disclosure only for proportionality level 1 banks. As the Group is currently proportionality level 2, this has not been presented.

(h) Large institutions shall disclose the quantitative information on the remuneration of their collective management body, differentiating between executive and non-executive members in accordance with Article 450(2) CRR.

The Group does not meet the criteria of a large institution and therefore this disclosure is not required.

17.2. UK REM1 - REMUNERATION AWARDED FOR THE FINANCIAL YEAR

£m			a	b	c	d
			MB ² Supervisory function	MB ² Management function	Other senior management	Other identified staff
1	Fixed remuneration	Number of identified staff	8	2	10	44
2		Total fixed remuneration	0.7	1.5	3.2	5.9
3		<i>Of which: cash-based</i>	0.7	1.3	3.2	5.9
4		<i>(Not applicable in the UK)</i>				
UK-4a		<i>Of which: shares or equivalent ownership interests</i>	-	0.2	-	-
5		<i>Of which: share-linked instruments or equivalent non-cash instruments</i>	-	-	-	-
UK-5x		<i>Of which: other instruments</i>	-	-	-	-
6		<i>(Not applicable in the UK)</i>				
7		<i>Of which: other forms</i>	-	-	-	-
8	<i>(Not applicable in the UK)</i>					
9	Variable remuneration	Number of identified staff	-	2	10	43
10		Total variable remuneration	-	3.3	4.3	3.2
11		<i>Of which: cash-based</i>	N/A ¹	N/A ¹	N/A ¹	N/A ¹
12		<i>Of which: deferred</i>	N/A ¹	N/A ¹	N/A ¹	N/A ¹
UK-13a		<i>Of which: shares or equivalent ownership interests</i>	N/A ¹	N/A ¹	N/A ¹	N/A ¹
UK-14a		<i>Of which: deferred</i>	N/A ¹	N/A ¹	N/A ¹	N/A ¹
UK-13b		<i>Of which: share-linked instruments or equivalent non-cash instruments</i>	N/A ¹	N/A ¹	N/A ¹	N/A ¹
UK-14b		<i>Of which: deferred</i>	N/A ¹	N/A ¹	N/A ¹	N/A ¹
UK-14x		<i>Of which: other instruments</i>	N/A ¹	N/A ¹	N/A ¹	N/A ¹
UK-14y	<i>Of which: deferred</i>	N/A ¹	N/A ¹	N/A ¹	N/A ¹	
15	<i>Of which: other forms</i>	N/A ¹	N/A ¹	N/A ¹	N/A ¹	
16	<i>Of which: deferred</i>	N/A ¹	N/A ¹	N/A ¹	N/A ¹	
17	Total remuneration (2 + 10)		0.7	4.8	7.5	9.1

Notes:

¹Certain rows of the template relating to variable remuneration are only applicable to Level 1 banks and therefore these have not been presented

²MB refers to the Management Body, in the Group's case, its Board of Directors

17.3. UK REM2 - SPECIAL PAYMENTS TO STAFF WHOSE PROFESSIONAL ACTIVITIES HAVE A MATERIAL IMPACT ON INSTITUTIONS' RISK PROFILE

No special payments have been made to staff whose professional activities have a material impact on the Group's risk profile and therefore template UK REM2 has not been presented.

17.4. UK REM3 - DEFERRED REMUNERATION

Template UK REM3 is only applicable to proportionality level 1 banks, therefore this template has not been presented.

17.5. UK REM4 - REMUNERATION OF 1 MILLION EUR OR MORE PER YEAR

Template UK REM4 is only applicable to proportionality level 1 banks, therefore this template has not been presented.

17.6. UK REM5 - INFORMATION ON REMUNERATION OF STAFF WHOSE PROFESSIONAL ACTIVITIES HAVE A MATERIAL IMPACT ON INSTITUTIONS' RISK PROFILE

		a	b	c	d	e	f	g	h	i	j
		Management body remuneration			Business areas						Total
		MB Supervisory function	MB Management function	Total MB	Investment banking	Retail banking	Asset management	Corporate functions	Independent internal control functions	All other	
1	Total number of identified staff										64
2	Of which: members of the MB	8	2	10							
3	Of which: other senior management				-	-	-	-	-	-	
4	Of which: other identified staff				-	-	-	11	13	30	
5	Total remuneration of identified staff	0.7	4.8	5.5	-	-	-	5.7	3.0	7.7	
6	Of which: variable remuneration	-	3.3	3.3	-	-	-	3.0	1.2	3.2	
7	Of which: fixed remuneration	0.7	1.5	2.2	-	-	-	2.7	1.8	4.5	

18. Encumbered and unencumbered assets

This section sets out

- Encumbered and unencumbered assets
- Collateral received and own debt securities issued
- Sources of encumbrance

Encumbrance is the process of pledging assets to support a firm's borrowings and disclosures of encumbered and unencumbered assets are required by the Pillar III rules to enable readers to evaluate a firm's potential access to future funding.

18.1. UK AE4 - ACCOMPANYING NARRATIVE INFORMATION

(a) General narrative information on asset encumbrance (Article 443 CRR)

Asset encumbrance is the process by which assets are pledged in order to secure, collateralise or credit-enhance a financial transaction from which they cannot be freely withdrawn. The Group maintains a level of encumbrance commensurate with the scale and scope of its business operations, within the context of a robust and diversified funding capability.

Responsibility for monitoring the Group's use of asset encumbrance in financial transactions lies with ALCO.

Accounting values are used in all tables, the disclosures reflect the median of the four quarterly end-of-period values over the previous 12 months as prescribed by regulatory requirements.

The consolidation scope applied for the purposes of asset encumbrance disclosures is consistent with that applied for liquidity requirements.

There are also no differences between the treatment of transactions which have been deemed to have been pledged or transferred compared to their encumbrance status.

(b) Narrative information on the impact of the business model on assets encumbrance and the importance of encumbrance to the institution's business model, which provides users with the context of the disclosures required in Template UK AE1 and UK AE2 (Article 443 CRR)

i. the main sources and types of encumbrance

The majority of the Group's encumbrance arises from its securitisation transactions and from activity in connection with Bank of England facilities intended to support lending. Assets are encumbered in accordance with the contractual requirements of these transactions.

The Group has also issued asset backed loan notes in securitisations where some or all of the rated notes have been retained in order to be used as security in other funding transactions. Such notes are not shown on the group balance sheet but where they are pledged as security, the appropriate proportion of the underlying assets are considered to be encumbered.

The Group was approved to participate in the Bank of England SME Term Funding Scheme ('TFSME'), which was launched in the year ended 30 September 2020 in response to the Covid pandemic. Drawings under the scheme are secured on mortgages pools or retained securitisation notes, subject, where necessary, to a haircut. The Group had drawn £2,750.0m under TFSME by 30 September 2022 (2021: £2,750.0m).

During the year all outstanding drawings under the Bank of England Term Funding Scheme ('TFS') were repaid. TFS utilised whole mortgage pools, to support new lending. This funding scheme was based on the value of the pledged assets, subject to a haircut. At 30 September 2021, £69.0m had been drawn under the TFS.

These schemes provide access to funding appropriate for the Group's operations having a four year term with interest payable at the Bank of England base rate, using either mortgage assets or mortgage securities as collateral. This makes these borrowings readily accessible and cost effective for the Group.

The Group is also authorised to access the Bank of England Indexed Long Term Repo ('ILTR') scheme, and drawings were made in the year, although no balances remained outstanding at the year end. Further liquidity is provided by a long / short repo transaction, which has also encumbered loan notes

Further mortgage assets of the Bank have been pre-positioned with the Bank of England for use in the, ILTR and other funding schemes.

The Group has also given an effective charge over its head office building as a guarantee for contributions payable to its defined benefit pension plan, encumbering the asset.

ii. the structure of encumbrance between entities within a group

There is no material difference in the level of encumbrance on a group or individual basis other than the encumbrance created in individual companies by securitisation arrangements which relate to securities held by other group entities.

iii. information on over-collateralisation

In the Group's borrowing arrangements overcollateralisation arises as a result of requirements to provide first loss funds, or similar support, or from any requirement for a 'haircut' to asset values before they can be used as security, as is the case with the various central bank funding schemes.

iv. additional information on encumbrance of assets

All encumbered assets are denominated in UK pounds sterling.

v. proportion of items included in column 060 'Carrying amount of unencumbered assets' in template UK AE1 that the Group would not deem available for encumbrance in the normal course of its business

Unencumbered assets include cash-in-hand, unsecuritised loan assets, derivative assets, property, plant and other fixed assets and intangible assets including goodwill. Only a small proportion is deemed unavailable for encumbrance, which primarily consists of derivative, and tax assets. In the normal course of business the Group would only encumber loan assets and, by encumbering retained notes, the cash, derivatives and sundry balances of retained securitisations.

vi. the amount of underlying assets and of cover pool assets of retained securitisations and retained covered bonds

The Group has assets totalling £957.1m underlying retained securitisations issuance included as unencumbered in table UK AE1 (interpolated median basis). The Group has not issued any Covered Bonds.

vii. the impact of the Group's business model on their level of encumbrance

The Group manages its level of encumbrance in accordance with the approved limits within its liquidity and funding risk strategies, and endeavours to ensure that a ratio covering depositor liabilities with unencumbered assets is maintained during normal business conditions. It continues to work closely with its regulators to ensure that its encumbrance profile remains transparent, proportionate and relevant to the business model.

viii. additional information on the breakdown of rows in the templates UK AE1, UK AE2 and UK AE3

Templates UK AE1, UK AE2 and UK AE3 are required to present interpolated median figures for the four quarter ends in the year ended 30 September 2022, on a line by line basis, and therefore may not cast.

Additional lines have been added to the tables UK AE1, UK AE2 and UK AE3 to present additional detail on the Group's position. The encumbered assets comprise the Group's loans pledged under TFSME, CSA collateral received, Cash Ratio Deposit assets, the Homer Road building which is encumbered to the Pension fund under the PFP and loans in the Group's securitisations and warehouses including the cash, derivatives and sundry assets in the SPV companies, in so far as the securities issued in these transactions are externally held.

18.2. UK AE1 - ENCUMBERED AND UNENCUMBERED ASSETS

£m		Carrying amount of encumbered assets		Fair value of encumbered assets		Carrying amount of unencumbered assets		Fair value of unencumbered assets	
		010	of which notionally eligible EHQLA and HQLA 030	040	of which notionally eligible EHQLA and HQLA 050	060	of which EHQLA and HQLA 080	090	of which EHQLA and HQLA 100
010	Assets of the reporting institution	5,462.3	N/A¹			10,404.9	N/A¹		
030	Equity instruments	-	N/A ¹	-	N/A ¹	-	N/A ¹	-	N/A ¹
040	Debt securities	-	N/A ¹	-	N/A ¹	-	N/A ¹	-	N/A ¹
050	<i>of which: covered bonds</i>	-	N/A ¹	-	N/A ¹	-	N/A ¹	-	N/A ¹
060	<i>of which: securitisations</i>	-	N/A ¹	-	N/A ¹	-	N/A ¹	-	N/A ¹
070	<i>of which: issued by general governments</i>	-	N/A ¹	-	N/A ¹	-	N/A ¹	-	N/A ¹
080	<i>of which: issued by financial corporations</i>	-	N/A ¹	-	N/A ¹	-	N/A ¹	-	N/A ¹
090	<i>of which: issued by non-financial corporations</i>	-	N/A ¹	-	N/A ¹	-	N/A ¹	-	N/A ¹
120	Other assets	5,462.3	N/A ¹			10,404.9	N/A ¹		
130	<i>of which: mortgage loans</i>	5,304.4	N/A ¹			6,809.3	N/A ¹		
140	<i>of which: other loans to customers</i>	-	N/A ¹			1,795.4	N/A ¹		
150	<i>of which: cash balances</i>	114.1	N/A ¹			1,503.0	N/A ¹		

Note:

¹Annex XXXVI specifies that Asset quality indicators by asset type in columns C030, C050, C080 and C100 of template UK AE1 only applies to credit institutions with total assets amounting to more than EUR 30 billion and as the Group's assets do not exceed this threshold, therefore these columns have not been disclosed

18.3. UK AE2 - COLLATERAL RECEIVED AND OWN DEBT SECURITIES ISSUED

£m		Fair value of encumbered collateral received or own debt securities issued		Unencumbered	
				Fair value of collateral received or own debt securities issued available for encumbrance	
		010	of which notionally eligible EHQLA and HQLA 030	040	of which EHQLA and HQLA 060
130	Collateral received by the reporting institution	-	N/A ¹	-	N/A ¹
140	Loans on demand	-	N/A ¹	-	N/A ¹
150	Equity instruments	-	N/A ¹	-	N/A ¹
160	Debt securities	-	N/A ¹	-	N/A ¹
170	<i>of which: covered bonds</i>	-	N/A ¹	-	N/A ¹
180	<i>of which: securitisations</i>	-	N/A ¹	-	N/A ¹
190	<i>of which: issued by general governments</i>	-	N/A ¹	-	N/A ¹
200	<i>of which: issued by financial corporations</i>	-	N/A ¹	-	N/A ¹
210	<i>of which: issued by non-financial corporations</i>	-	N/A ¹	-	N/A ¹
220	Loans and advances other than loans on demand	-	N/A ¹	-	N/A ¹
230	Other collateral received	-	N/A ¹	-	N/A ¹
240	Own debt securities issued other than own covered bonds or securitisations	-	N/A ¹	-	N/A ¹
241	Own covered bonds and asset-backed securities issued and not yet pledged			710.9	N/A¹
250	TOTAL ASSETS, COLLATERAL RECEIVED AND OWN DEBT SECURITIES ISSUED	5,462.3	N/A¹		

Note:

¹Annex XXXVI specifies that the disclosure of asset quality indicators by asset type in columns C030 and C060 of template UK AE2 is only required for credit institutions with total assets amounting to more than EUR 30 billion. The Group's assets do not exceed this threshold and therefore these columns have not been disclosed

18.4. UK AE3 - SOURCES OF ENCUMBRANCE

£m		Matching liabilities, contingent liabilities or securities lent	Assets, collateral received and own debt securities issued other than covered bonds and securitisations encumbered
		010	030
010	Carrying amount of selected financial liabilities	4,072.2	6,522.3
	Asset backed securities	467.9	1,595.4
	Secured bank borrowings	825.7	972.0
	Central bank borrowings	2,750.0	3,891.0
	Other sources of encumbrance	0.0	46.1

19. IRB approach for credit risk

The following templates have not been presented as they apply to institutions that calculate the risk-weighted exposure amounts for credit risk under the IRB approach. As the Group does not currently have any IRB approvals, these are not currently applicable.

- UK CRE – Qualitative disclosure requirements related to IRB approach
- UK CR6 – IRB approach – Credit risk exposures by exposure class and PD range
- UK CR6-A – Scope of the use of IRB and SA approaches
- UK CR7 – IRB approach – Effect on the RWEAs of credit derivatives used as CRM techniques
- UK CR7-A – IRB approach – Disclosure of the extent of the use of CRM techniques
- UK CR8 – RWEA flow statements of credit risk exposures under the IRB approach
- UK CR9 – IRB approach – Back-testing of PD per exposure class (fixed PD scale)
- UK CR9.1 – IRB approach – Back-testing of PD per exposure class (only for PD estimates according to point (f) of Article 180(1) CRR)
- UK CR10 – Specialised lending and equity exposures under the simple risk weighted approach (IRB – Slotting Model)

20. Glossary

This section sets out

- A listing of defined terms used in the document

AIRB	Advanced IRB	CRO	Chief Risk Officer
ALCO	Asset and Liability Committee	CRR	Capital Requirements Regulation (EU Regulation 575 / 2013)
AMA	Advanced Measurement Approach (for operational risk)	CSA	Credit Support Annex
ASA	Alternative Standardised Approach (for operational risk)	CVA	Credit Valuation Adjustment
ASF	Available Stable Funding	EAD	Exposure at Default
AT1	Additional Tier-1	ECA	Export Credit Agency
Bank	Paragon Bank PLC	ECAI	External Credit Assessment Institution(s)
BBLS	Bounce Back Loan Scheme	ECL	Expected Credit Loss
BCBS	Basel Committee on Banking Supervision	EDI	Equality, Diversity and Inclusion
BIA	Basic Indicator Approach (for operational risk)	ERC	Executive Risk Committee
CBILS	Coronavirus Business Interruption Loan Scheme	ERMF	Enterprise-wide Risk Management Framework
CC	Credit Committee	EU	European Union
CCC	Customer and Conduct Committee	EV	Economic Value
CCF	Credit Conversion Factor	EVE	Economic Value of Equity
CCoB	Capital Conservation Buffer	FCA	Financial Conduct Authority
CCP	Central Counterparty	FIRB	Foundation IRB
CCR	Counterparty Credit Risk	FLA	Finance and Leasing Association
CCyB	CounterCyclical Capital Buffer	Framework	Group Corporate Governance Policy Framework
CEO	Chief Executive Officer	Fully Loaded	Calculated as if the IFRS 9 transition relief were not available
CET1	Common Equity Tier-1	Group	Paragon Banking Group PLC and all its subsidiary entities
CFO	Chief Financial Officer	Group Accounts	Annual Report and Accounts of Paragon Banking Group PLC for the year ended 30 September 2022
CIB	Chartered Institute of Bankers	G-SII	Global Systemically Important Institution
CML	Council of Mortgage Lenders	HQLA	High Quality Liquid Assets
Company	Paragon Banking Group PLC	IAS	International Accounting Standard(s)
CQS	Credit Quality Step	ICAAP	Internal Capital Adequacy Assessment Process
CRD	Capital Requirements Directive	ICR	Individual Capital Requirement
CRD IV	Fourth EU Capital Requirements Directive		
CRM	Credit Risk Mitigation		

IFRS	International Financial Reporting Standard(s)	RP	Recovery Plan
ILAAP	Internal Liquidity Adequacy Assessment Process	RSF	Required Stable Funding
ILTR	Bank of England Indexed Long-Term Repo scheme	Rulebook	The PRA Rulebook
IMLA	Intermediary Mortgage Lenders Association	RWA	Risk Weighted Assets
IMM	Internal Model Method (for market risk)	RWEA	Risk Weighted Exposure Amount
IRB	Internal Ratings Based (approach to credit risk)	SA	Standardised Approach (to credit risk)
IRRBB	Interest Rate Risk in the Banking Book	SA-CCR	Standardised Approach for Counterparty Credit Risk
ISDA	International Swaps and Derivatives Association	SEC-ERBA	Securitisation External Ratings Based Approach
LCH	London Clearing House Limited	SEC-IRBA	Securitisation Internal Ratings Based Approach
LCR	Liquidity Coverage Ratio	SFT	Securities Financing Transactions
LGD	Loss Given Default	SICR	Significant Increase in Credit Risk
LIBOR	London Interbank Offered Rate	SM&CR	Senior Manager and Certification Regime
LREQ	Liquidity Requirement (rules)	SME	Small and / or Medium Sized Enterprise
MB	Management Body (in the Group's case, the Board of Directors)	SONIA	Sterling Overnight Index Average
MCR	Minimum Capital Requirement	SOT	Supervisory Outlier Test
MI	Management Information	SREP	Supervisory Review and Evaluation Process
MRC	Model Risk Committee	T1	Tier-1 (Capital)
MRT	Material Risk Taker	T2	Tier-2 (Capital)
NII	Net Interest Income	TFS	Term Funding Scheme
NMD	Non-maturing Deposit	TFSME	Term Funding Scheme with additional incentives for SMEs
NSFR	Net Stable Funding Ratio	TSA	The Standardised Approach (for operational risk)
OCI	Other Comprehensive Income	UK	United Kingdom
OLAR	Overall Liquidity Adequacy Rule	UK Basis	The Group's leverage exposure on the basis set out by the PRA
ORC	Operational Risk Committee	VAR	Value At Risk
ORMF	Operational Risk Management Framework		
O-SII	Other Systemically Important Institution		
PD	Probability of Default		
PFE	Potential Future Exposure		
PRA	Prudential Regulation Authority		
PVA	Prudent Valuation Adjustment		
PwC	PricewaterhouseCoopers		
QCCP	Qualifying Central Counterparty		
RBA	Role Based Allowance		
RC	Replacement Cost		
RCC	Risk and Compliance Committee		
RemCo	Remuneration Committee		
RICS	Royal Institution of Chartered Surveyors		
RLS	Recovery Loan Scheme		



PARAGON BANKING GROUP PLC

51 Homer Road, Solihull, West Midlands B91 3QJ

Telephone: 0121 712 2323

www.paragonbankinggroup.co.uk

Registered No. 2336032